



# Noise, vibration and shock control

## Isodamp and Isoloss - grommets, mounts and isolators

---

The interrelated dynamics of multiple motors, fans, blowers, actuators and other mechanisms inside equipment can present complications that prove nearly impossible to define precisely. In addition, product designers must consider noise control, as well as unpredictable vibration and shock inputs from external sources. The process of addressing these complications has been simplified with our comprehensive range of standard isolators and mounts molded from proprietary, highly damped Isodamp, VersaDamp thermoplastics and Isoloss elastomer thermosets.

### Benefits:

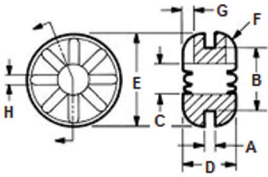
- Engineered to control noise, vibration and shock in minimum sway space - offers a solution for almost any application
- Variety of formulations engineered to perform in discrete temperature ranges - comprehensive range of products to choose from
- Excellent physical integrity - soft and pliable yet physically strong
- Flexible - easy to install

### Applications:

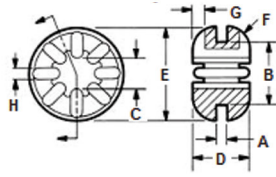
- Computers
- Medical
- Printers
- Laboratory

## Ribbed grommets

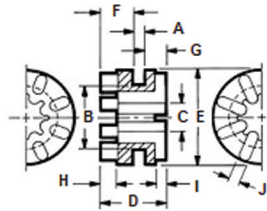
Symmetric



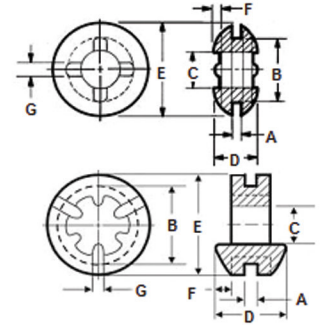
Symmetric, internally ribbed



Asymmetric



Symmetric, low-load



Family	Product	Load (lbs)	Dimensions (inches)							
			A Plate thickness	B Hole diam.	C Inside diam.	D Overall height	E Outside diam.	F Edge radius	G Rib height	H Rib width
<b>Isodamp/Versa Damp</b>										
		Recommended maximum								
Symmetric	G-401	6.0	.063	.375	.224	.313	.563	.125	.063	.063
	G-402	6.0	.125	.375	.226	.375	.563	.125	.063	.063
	G-403	6.0	.063	.375	.276	.313	.625	.125	.063	.063
	G-404	6.0	.125	.375	.281	.375	.625	.125	.063	.063
Symmetric internally ribbed	G-410	3.0	.057	.250	.158	.230	.379	.050	.040	.050
	G-411	6.0	.063	.375	.188	.323	.563	.130	.063	.063
	G-412	3.0	.031	.250	.158	.230	.379	.050	.040	.050
	G-414	6.0	.043	.375	.188	.323	.563	.130	.063	.063
			A Plate thickness	B Hole diam.	C Inside diam.	D Overall height	E Outside diam.	F/G Lg./sm. fig. height	H/I Lg./sm. rib height	J Rib width
Asymmetric	G-430	5.0	.055	.375	.180	.395	.560	.210/.130	.100/.065	.062
	G-431	8.0	.055	.560	.172	.390	.750	.210/.125	.100/.065	.062
			A Plate thickness	B Hole diam.	C Inside diam.	D Overall height	E Outside diam.	F Rib height	G Rib width	
Symmetric, low-load	G-427	1.5	.049	.312	.180	.194	.440	.025	.056	
	G-461	0.3	.037	.298	.157	.271	.393	.063	.051	
	G-462	0.3	.047	.304	.153	.276	.393	.063	.051	

	C-1002	C-1105	C-1100	C-8002	Versal Damp
Grommet color	Blue	Turquoise	Yellow	Sky blue	Black
Peak performance temperature Range at 1000 Hz	55°F-105°F (13°C-41°C)	80°F-130°F (27°C-54°C)	96°F-145°F (35°C-83°C)	62°F-105°F (17°C-41°C)	-40°F-122°F (-40°C-50°C)

For C-1002 material, indicate “-1” after the part number (eg: G-401-1)

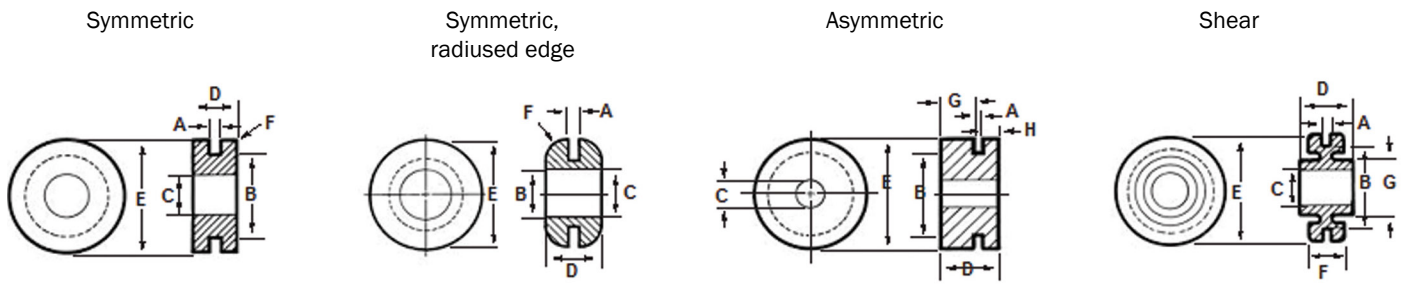
For C-1105 material, indicate “-2” after the part number (eg: G-401-2)

For C-1100 material, indicate “-3” after the part number (eg: G-401-3)

For C-8002 material, indicate “-8” after the part number (eg: G-401-8)

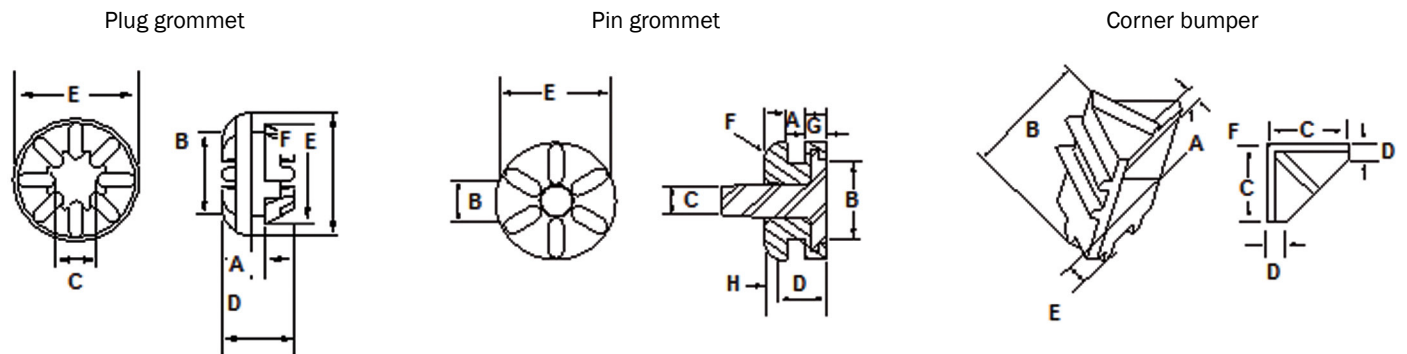
For Versa Damp material, indicate “formulation number” after the part number (eg: G-401-2325)

## Non-ribbed grommets



Family	Product	Load (lbs)	Dimensions (inches)							
			A Plate thickness	B Hole diam.	C Inside diam.	D Overall height	E Outside diam.	F Edge radius	G Lg. flg Height	H Sm. flg Height
<b>Isodamp/Versa Damp</b>			Recommended maximum							
Symmetric	G-501	17.0	.060	.360	.187	.120	.500	n/a	n/a	n/a
	G-502	17.0	.063	.338	.182	.182	.500	n/a	n/a	n/a
	G-503	10.0	.054	.244	.190	.306	.385	.020	n/a	n/a
	G-504	13.0	.063	.309	.183	.187	.437	n/a	n/a	n/a
	G-505	17.0	.062	.375	.190	.175	.500	n/a	n/a	n/a
	G-506	14.0	.043	.319	.177	.220	.460	.020	n/a	n/a
	G-507	40.0	.070	.503	.277	.396	.751	.050	n/a	n/a
Symmetric, radiused - edge	G-521	25.0	.062	.375	.270	.325	.625	.125	n/a	n/a
Asymmetric	G-511	40.0	.063	.562	.180	.395	.753	n/a	.214	.118
	G-512	26.0	.115	.437	.245	.620	.625	n/a	.380	.125
	G-513	40.0	.078	.500	.304	.500	.750	n/a	.290	.132
			A Plate thickness	B Hole diam.	C Inside diam.	D Overall height	E Outside diam.	F Range thickness	G Boss out. diam.	
Shear	G-601	2.0	.056	.560	.248	.375	.750	.235	.375	

## Plug grommets, pin grommets and corner bumpers



Family	Product	Dimensions (inches)							
		A Plate thickness	B Hole diam.	C Inside diam.	D Overall height	E Outside diam.	F Snap-fit diam.		
<b>Isodamp/Versa Damp</b>									
Plug grommets	P-410	.057	.250	.158	.255	.379	.344		
	P-411	.063	.395	.188	.323	.563	.457		
	P-415	.039	.250	.158	.255	.379	.365		
		A Plate thickness	B Hole diam.	C Pin diam.	D Grommet height	E Outside diam.	F Edge radius	G Lg. flg height	H Sm. flg height
Pin grommets	PG-100	1.5	6.4	2.5	5.0	9.8	1.27	1.75	1.75
		A Drive thickness	B Bumper height	C Bumper length	D Side wall thckns.	E Bottom wall thickness	F Top wall thickness		
Corner bumpers	CB-100	5.0	9.75	6.00	1.5	1.5	3.25		
	CB-101	5.0	8.00	6.75	1.5	1.5	1.50		

	C-1002	C-1105	C-1100	C-8002	Versal Damp
Grommet color	Blue	Turquoise	Yellow	Sky Blue	Black
Peak performance temperature Range at 1000 Hz	55°F-105°F (13°C-41°C)	80°F-130°F (27°C-54°C)	96°F-145°F (35°C-83°C)	62°F-105°F (17°C-41°C)	-40°F-122°F (-40°C-50°C)

For C-1002 material, indicate “ -1” after the part number (eg: G-401-1 )

For C-1105 material, indicate “ -2” after the part number (eg: G-401-2 )

For C-1100 material, indicate “ -3” after the part number (eg: G-401-3 )

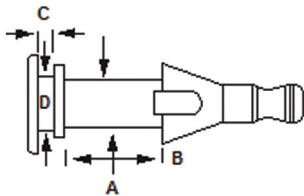
For C-8002 material, indicate “ -8” after the part number (eg: G-401-8 )

For Versa Damp material, indicate “ formulation number ” after the part number (eg: G-401-2325 )

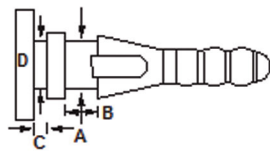
Dimensions given here are nominal. Exact specifications print available on request.

### Fan mounts

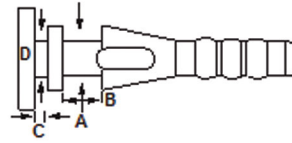
F-340



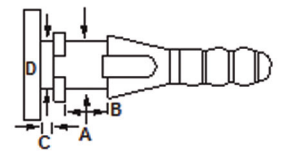
F-344



F-345

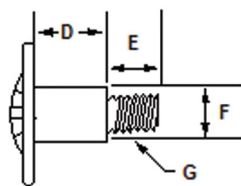
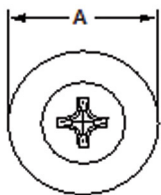


F-347



Family	Product	Dimensions ( mm )			
		A Fan hole diam.	B Fan hole depth	C Plate thickns.	D Plate hole diam.
Isodamp/ Versa Damp	F-340	2.5	5.0	.80	2.75
	F-344	4.4	3.0	1.3	4.4
	F-345	3.5	3.8	1.3	3.5
	F-347	4.4	4.5	0.8	4.5

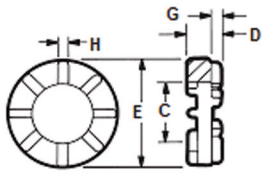
### Shoulder bolts



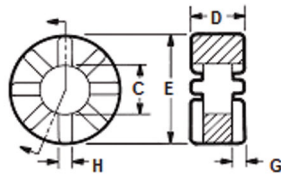
Product	Use with	Dimensions ( mm )				
		A Head diam.	D Shoulder length	E Thread length	F Shoulder diam.	G Thread
SB-4102	G-410	.350	.214	.215-.185	.161	6-32 UNC-2A
SB-4105	G-410	.350	.214	.150-.126	.161	M 3-0.5
SB-4107	G-410	.350	.214	.215-.185	.161	M 3-0.5
SB-4112	G-411	.500	.300	.215-.185	.196	6-32 UNC-2A
SB-4114	G-411	.500	.300	.215-.185	.194	M 4-0.7
SB-4118	G-411	.500	.250	.215-.185	.188	6-32 UNC-2A

## Bushings / Ribbed Bushings

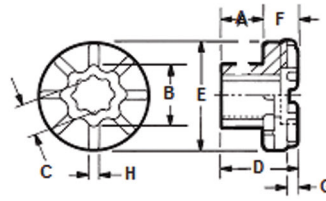
Symmetric



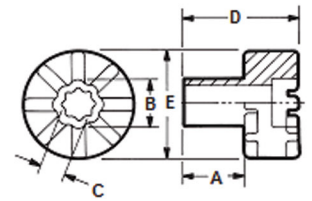
Symmetric, radiused Edge



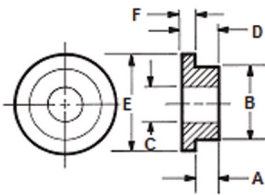
Asymmetric



Shear



## Non-ribbed Bushings



Family	Product	Load (lbs)	Dimensions (inches)							
			A Shrank height	B Shrank diam.	C Inside diam.	D Overall height	E Range diam.	F Range height	G Rib height	H Rib width
Ribbed	R-444	10.0	n/a	n/a	.460	.250	.813	n/a	.078	.085
	B-434	10.0	.313	.469	.260	.563	.813	.250	.078	.085
	R-445	25.0	n/a	n/a	.457	.520	1.000	n/a	.132	.125
	B-435	25.0	.544	.473	.260	1.060	1.000	.516	.132	.135
Non - Ribbed	B-531	17.0	.120	.360	.189	.175	.500	.055	n/a	n/a
	B-532	40.0	.139	.420	.271	.259	.750	.120	n/a	n/a
	B-533	100.0	.085	.750	.427	.325	1.265	.240	n/a	n/a

	C-1002	C-1105	C-1100	C-8002	Versal Damp
Grommet color	Blue	Turquoise	Yellow	Sky blue	Black
Peak performance temperature Range at 1000 Hz	55°F-105°F (13°C-41°C)	80°F-130°F (27°C-54°C)	95°F-145°F (35°C-83°C)	62°F-105°F (17°C-41°C)	-40°F-122°F (-40°C-50°C)

For C-1002 material, indicate “ -1” after the part number (eg: G-401-1 )

For C-1105 material, indicate “ -2” after the part number (eg: G-401-2 )

For C-1100 material, indicate “ -3” after the part number (eg: G-401-3 )

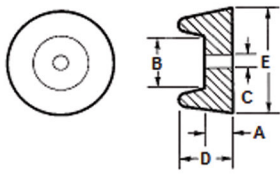
For C-8002 material, indicate “ -8” after the part number (eg: G-401-8 )

For Versa Damp material, indicate “ formulation number ” after the part number (eg: G-401-2325 )

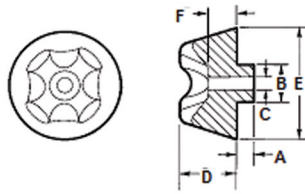
Dimensions given here are nominal. Exact specifications print available on request.

## Mounting feet and equipment mounts

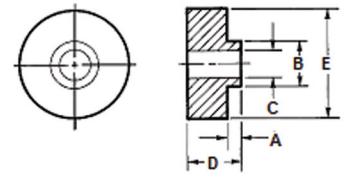
Mounting Feet



Mounting Feet



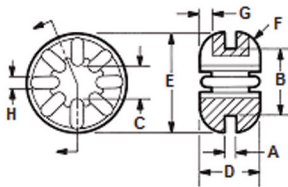
Equipment Mounts



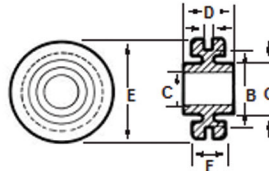
Family	Product	Load (lbs)	Dimensions (inches)					
			A Bolt rg. height	B Bolt rg. diam.	C Inside diam.	D Overall height	E Outside diam.	F Bolt rg. height
Isodamp Mounting feet C-1002	MF-1010	15.0	.270	.493	.123	.521	.982	n/a
	MF-1010PSA	15.0	.270	.493	.123	.521	.982	n/a
			A Shrank height	B Shrank diam.	C Inside diam.	D Mount height	E Mount diam.	F Bolt rg. height
Mounting feet C-1002	L-020	20.0	.215	.500	.194	.755	1.502	.410
	L-021	20.0	n/a	n/a	.194	.755	1.502	.410
	L-030	20.0	.215	.509	.325	.755	1.502	.410
	L-031	20.0	n/a	n/a	.320	.755	1.502	.410
Equipment mounts C-1002	ML-4250	70.0	.125	.500	.327	.625	1.172	n/a
	ML-42100	140.0	.188	.750	.443	.820	1.656	n/a
	ML-42200	300.0	.260	1.010	.575	1.007	2.371	n/a
	ML-42500	700.0	.355	1.000	.549	1.385	3.667	n/a

## HD/SL grommets

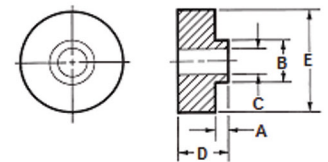
Symmetric,  
internally ribbed



Shear



Equipment mounts



Family	Product	Load (lbs)	Dimensions (inches)							
			A Plate thickness	B Hole diam.	C Inside diam.	D Overall height	E Outside diam.	F Edge radius	G Rib height	H Rib width
Symmetric, internally ribbed	G-411-H	6.0	.063	.375	.188	.313	.555	.125	.063	.063
	G-411-SL20100	1.0	.059	.375	.188	.308	.555	.123	.059	.063
	G-411-SL25200	1.0	.059	.375	.188	.308	.555	.123	.059	.063
			A Plate thickness	B Hole diam.	C Inside diam.	D Overall height	E Outside diam.	F Range thickness	G Boss out. diam.	H Rib width
Shear	G-601-H	2.0	.056	.565	.245	.375	.750	.237	.375	n/a
	G-601-SL20100	.3	.050	.569	.245	.380	.755	.245	.380	n/a
	G-601-SL25200	.3	.050	.569	.245	.380	.755	.245	.380	n/a
			A Shrank height	B Shrank diam.	C Inside diam.	D Overall height	E Range diam.	F Range thickness	G Boss out. diam.	H Rib width
Equipment mounts	ML-4250-H	70.0	.125	.495	.309	.629	1.169	n/a	n/a	n/a
	ML-4250-SL20100	10.0	.126	.500	.313	.625	1.165	n/a	n/a	n/a
	ML-4250-SL25200	10.0	.126	.500	.313	.625	1.165	n/a	n/a	n/a

“ H ” after number indicates ISOLOSS HD material; “ SL-XXXX ” after part number indicates ISOLOSS SL material. Dimensions given here are nominal. Exact specification print available on request.

---

## Contact us

Trelleborg Applied Technologies delivers innovative and reliable solutions, materials and smart systems that maximizes performance for our customers. Our dedicated and highly skilled staff are always on hand to provide seamless process support from initial idea, through to delivery and beyond.



Tel: +44 (0) 1777 712500



Email: [appliedtechnologies@trelleborg.com](mailto:appliedtechnologies@trelleborg.com)



**TRELLEBORG**

[WWW.TRELLEBORG.COM/APPLIED-TECHNOLOGIES](http://WWW.TRELLEBORG.COM/APPLIED-TECHNOLOGIES)