








Technical manual


Trelleborg
Material handling




Technical Manual Index

Application	Technology	Tread pattern	Page	
BATTERY AND ENGINE COUNTER BALANCED FORKLIFTS 	Resilient	XP1000 	14	
		XP900	20	
		XP800	22	
		XP700	24	
		Pneumatic	TR-900	26
	T-900		28	
	Press On Solid		PS1000 	30
			Trelleborg POS	32
			PS800	40

Application	Technology	Tread pattern	Page
PORTS 	Pneumatic	TR-900	42
		T-900	42
		CX940	44
		SR940	44
	Resilient	XP1000 	46

Application	Technology	Tread pattern	Page
GROUND SUPPORT EQUIPMENT 	Resilient	GSE Resilient	48
	Press On Solid	GSE POS	50

Application	Technology	Tread pattern	Page
INDUSTRIAL WHEELS 	Lock Ring Wheels	Premium industrial wheels 8" - 15"	52
		Premium industrial wheels 20" - 24"	52
	Split Wheels	Premium industrial wheels 8" - 12"	52
	Press On Band Wheels	Premium industrial wheels up to 30"	54
	Earthmover Wheels	Premium industrial wheels 25" - 33"	54
	Drop Centre Wheels	Premium industrial wheels up to 30"	54

Product range overview

Size Category	Tire Size	Alternative Size	Rim	● Resilient ▼ Radial Pneumatic ■ Bias Pneumatic										
				Maximum Intensity					High Intensity			Medium Intensity	Low Intensity	
				XP1000	TR-900	T-900	CX940	SR940	XP900	Kargo	PBB	XP800	XP700	
4"	3.00-4		2.10-4	●							●			
	3.00-4		2.50C-4	●							●			
	4.00-4		2.50C-4	●							●			
6"	8-2	8x2-4	1.2-4								●			
	10½x4-6		3.25I-6								●			
	10-2	10x2-6	1.2-6								●			
8"	140/55-6		4.50E-6								●			
	15x4 1/2-8	125/75-8	3.00D-8									●		
	15x4½-8	125/75-8	3.00D-8	●						●			●	
	15x4½-8	125/75-8	3.25D-8	●										
	16x6-8	150/75-8	4.33R-8	●						●			●	
	17x7-8		4.33R-8	●										
	18x7-8	180/70-8	4.33R-8	●		■				●			●	
	18x9-8		4.33R-8	●										
	2.00-8/2.50		2.50-8								●			
	4.00-8		2.50-8								●			
	4.00-8		3.00D-8	●									●	
	4.00-8		3.75P-8	●										
	5.00-8		3.00D-8	●	▼	■				●			●	●
	5.00-8		3.75P-8	●							●			
	9"	140/55-9	15x5.5-9	4.00E-9	●						●			●
16x5-9/3.50			3.50-9											
21x8-9		200/75-9	6.00E-9	●						●			●	●
6.00-9			4.00E-9	●	▼	■				●			●	●
10"	180/60-10		5.00F-10	●										
	200/50-10		6.50F-10	●						●			●	●
	23x9-10	225/75-10	6.50F-10	●						●			●	●
12"	6.50-10		5.00F-10	●	▼	■				●			●	●
	23x10-12	250/60-12	8.00G-12	●						●			●	●
	27x10-12	250/75-12	8.00G-12	●						●			●	●
	315/45-12		10.00G-12	●										
13"	7.00-12		5.00S-12	●	▼	■				●			●	●
	23x5-13		3.75P-13	●										
15"	250-15	250/70-15	7.0-15	●	▼	■				●			●	●
	250-15	250/70-15	7.5-15	●						●			●	●
	250-15	315/70-15	7.5-15	●										
	26x8.5-15/7.00		7.00-15								●			
	28x9-15	225/75-15 (8.15-15)	7.0-15		▼	■				●			●	●
	28x9-15	250/70-15	7.0-15	●										
	300-15	28x12½-15	8.0-15	●										
	300-15	315/70-15	8.0-15		▼	■				●			●	●
	355/45-15		9.75-15	●										
	355/45-15	28x12.5-15	9.75-15										●	
	355/45-15	28x12½-15	9.75-15							●				
	355/50-15		9.75-15							●			●	
	355/50-15	32x12½-15 (350-15)	9.75-15	●										
355/65-15		9.75-15	●											

Product range overview

Size Category	Tire Size	Alternative Size	Rim	● Resilient ▼ Radial Pneumatic ■ Bias Pneumatic																	
				Maximum Intensity					High Intensity			Medium Intensity	Low Intensity								
				XP1000	TR-900	T-900	CX940	SR940	XP900	Kargo	PBB	XP800	XP700								
15"	355/65-15	32x12.5-15 (350-15)	9.75-15																		
	355/65-15	32x12½-15 (350-15)	9.75-15																		
	355/65-15	32x12½-15(350-15)	9.75-15																		
	400/65-15	250/80-16	11.00-15																		
	5.50-15		4.5-15																		
	6.00-15	29x8-15	4.5-15																		
	7.00-15		5.5-15																		
	7.00-15		6.0-15																		
	7.00-15	29x8-15	5.5-15																		
	7.00-15	29x8-15	6.0-15																		
	7.50-15		5.5-15																		
	7.50-15		6.0-15																		
	7.50-15		6.5-15																		
	8.25-15		5.5-15																		
	8.25-15		6.5-15																		
8.25-15	225/75-15 (8.15-15)	6.5-15																			
16"	40x14-16/10.00		10.00-16																		
	40x14-16/11.00		11.00-16																		
	7.50-16	250/80-16	6.00G-16																		
7.50-16	270/95-20	5.5-16																			
20"	10.00-20	290/95-20	6.5-20																		
	10.00-20	290/95-20	7.0-20																		
	10.00-20	290/95-20	7.5-20																		
	10.00-20	290/95-20	8.0-20																		
	10.00-20	300/95-20	8.0-20																		
	11.00-20	300/95-20	8.0-20																		
	11.00-20	330/95-20	8.0-20																		
	12.00-20		10.0-20																		
	12.00-20	330/95-20	10.0-20																		
	12.00-20	330/95-20	8.0-20																		
	12.00-20	330/95-20	8.5-20																		
	355/50-20		10.0-20																		
	465/55-20		16.0-20																		
	9.00-20	270/95-20	6.5-20																		
	9.00-20	270/95-20	7.0-20																		
9.00-20	290/95-20	7.0-20																			
24"	12.00-24	330/95-24	10.0-24																		
	12.00-24	330/95-24	8.5-24																		
	14.00-24	385/95-24	10.00W-24																		
	14.00-24	385/95-24	10.0-24																		
25"	14.00-25		11.25-25																		
	16.00-25	445/95-25	11.25-25																		
	18.00-25		13.00/2.5																		
	480/95R25		13.00/2.5-25 11.25/2.0-2																		

Customer oriented solutions

Through polymer engineering and application expertise, Trelleborg strives to deliver optimum performance for all our customers needs. Tailored for specialist applications and environments, our tires provide innovative solutions for a growing range of industries.

Alongside our premium tire and wheel offering for typical material handling applications, Trelleborg also delivers high performance tires for specialist vehicles operating in demanding environments.

Our specialist premium compounds are designed to deliver maximum productivity and sustainability, and adhere to compliant safety regulations to keep operators safe.



Pit Stop Line for safety and tire life



The Pit Stop Line, Trelleborg innovation for our premium range, lets operators and fleet managers know with 100% accuracy when tires need replacing.

WASTE ON AVERAGE 25% OF TIRE LIFE DUE TO EARLY REPLACEMENT



UNNECESSARY DOWNTIME AND MONEY WASTE

24% OF TIRES REPLACED TOO LATE

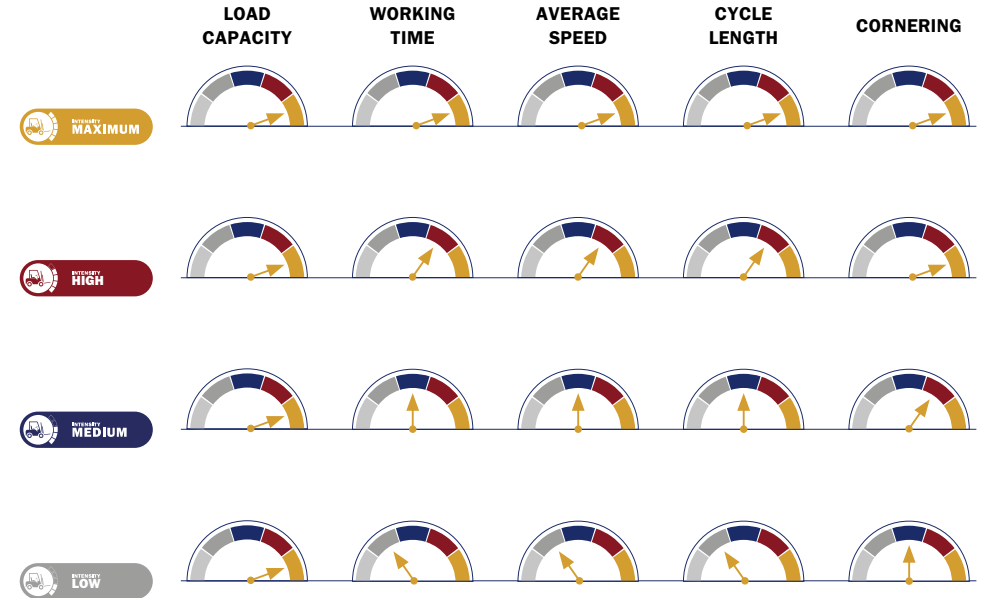


VERY HIGH SAFETY RISK FOR TIRE FAILURE

The Pit Stop Line is an orange strip which appears approximately 100 hours before the tires need to be replaced. It ensures the tire is only changed when worn out, avoiding to replace it too early and risk spending too much, or replace it too late and risk machine and operator safety.

The right tire in all working conditions

Trelleborg's unique application intensity rating system helps customers to easily identify the solution that best fits their needs ensuring maximum efficiency and performance.



LOAD CAPACITY

Trelleborg tires fall fully under recommended load carrying capacities as indicated by the main worldwide technical organizations.



WORKING TIME

Working solid tires non-stop can potentially cause a buildup of heat and reduce lifespan.



AVERAGE SPEED

High speeds may cause internal stress and deformation leading to overheating, compromising tire performance.



CYCLE LENGTH

Long distances prevent dissipation of heat generated during operations which can create dangerous separation within the tire.



CORNERING

Repetitive vehicle cornering produces excessive torque on the tire, increasing the likelihood of deformation.

Tire capacity

Press On Band Tire Capacity Table							
Size	Overall Diameter	Section Width	Other Vehicles			Forklift 25km/h	
			@ 6 km/h	@ 10 km/h	@ 16 km/h	Load Wheel	Steering Wheel
10x4x6½	254	102	780	640	555	565	465
9x5x5	229	127	960	790	680	695	570
10x5x6½	254	127	1,010	830	725	735	605
10½x5x6½	267	127	1,070	880	770	780	640
13x4½x8	330	114	1,120	920	800	815	670
16x4x12½	406	102	1,120	920	800	810	665
14x4½x8	356	114	1,170	960	830	850	695
13x5x8	330	127	1,290	1,060	920	935	765
14x5x10	356	127	1,335	1,095	955	970	795
15x5x11¼	381	127	1,390	1,140	990	1,010	830
15½x5x10	394	127	1,470	1,210	1,050	1,070	875
13½x5½x8	343	140	1,510	1,240	1,080	1,095	895
16x5x10½	406	127	1,510	1,240	1,080	1,095	895
16¼x5x11¼	413	127	1,530	1,250	1,090	1,105	905
17x5x12½	432	127	1,570	1,290	1,120	1,145	935
18x5x12½	457	127	1,640	1,350	1,170	1,195	980
15x6x11¼	381	152	1,715	1,410	1,225	1,245	1,020
16x6x10½	406	152	1,910	1,570	1,360	1,390	1,140
16¼x6x11¼	413	152	1,920	1,580	1,370	1,395	1,140
17x6x12½	432	152	1,980	1,630	1,410	1,435	1,180
18x6x12½	457	152	2,100	1,720	1,500	1,525	1,250
16x7x10½	406	178	2,325	1,910	1,660	1,685	1,380
16¼x7x11¼	413	178	2,325	1,900	1,650	1,680	1,380

Press On Band Tire Capacity Table							
Size	Overall Diameter	Section Width	Other Vehicles			Forklift 25km/h	
			@ 6 km/h	@ 10 km/h	@ 16 km/h	Load Wheel	Steering Wheel
22x6x17¼	559	152	2,345	1,925	1,675	1,700	1,395
21x6x15	533	152	2,350	1,930	1,680	1,710	1,400
22x6x16	559	152	2,450	2,000	1,740	1,770	1,450
18x7x12½	457	178	2,550	2,100	1,820	1,855	1,520
21x7x15	533	178	2,875	2,350	2,050	2,085	1,710
22x7x16	559	178	2,975	2,450	2,125	2,160	1,770
18x8x12½	457	203	3,000	2,475	2,150	2,180	1,790
21x8x15	533	203	3,375	2,775	2,425	2,455	2,015
18x9x12½	457	229	3,450	2,850	2,475	2,510	2,060
22x8x16	559	203	3,500	2,875	2,500	2,545	2,085
21x9x15	533	229	3,900	3,200	2,775	2,830	2,320
22x9x16	559	229	4,050	3,325	2,875	2,930	2,400
22x10x16	559	254	4,575	3,750	3,250	3,315	2,720
28x10x22	711	254	5,470	4,490	3,905	3,970	3,255
22x12x16	559	305	5,625	4,625	4,025	4,090	3,350
22x14x16	559	356	6,700	5,505	4,785	4,865	3,990
28x12x22	711	305	6,740	5,540	4,820	4,900	4,015
22x16x16	559	406	7,745	6,360	5,530	5,625	4,610
28x14x22	711	356	8,020	6,590	5,720	5,820	4,780
40x12x30	1,016	305	8,760	7,170	5,690	6,030	5,010
28x16x22	711	406	9,270	7,620	6,620	6,730	5,520
40x14x30	1,016	356	10,610	8,675	6,890	7,300	6,060
40x16x30	1,025	406	12,420	10,160	8,060	8,550	7,095
40x20x30	1,025	508	16,120	13,180	10,460	11,090	9,210

Tire capacity

Resilient Tire Capacity Table						
Size	Rim	Overall Diameter	Section Width	Other Vehicles	Forklift 25km/h	
				Static	Load Wheel	Steering Wheel
3.00-4	2.10-4	252	84	295	260	195
12x4-6	2.5-6	303	91	570	485	375
4.00-4	2.50C-4	307	92	625	535	412
10½x4-6	3.25I-6	268	104	710	610	470
4.00-8	3.75P-8	408	125	1,175	1,010	775
15x4½-8	3.00D-8	377	118	1,210	1,040	800
140/55-9	4.00E-9	380	132	1,360	1,170	900
16x6-8	4.33R-8	411	152	1,740	1,495	1,150
23x5-13	3.75P-13	617	138	1,740	1,495	1,150
5.00-8	3.75P-8	457	152	1,740	1,495	1,150
17x7-8	4.33R-8	430	159	2,160	1,860	1,430
6.00-9	4.00E-9	524	141	2,190	1,885	1,450
18x7-8	4.33R-8	456	158	2,490	2,145	1,650
5.50-15	4.5-15	664	143	2,490	2,145	1,650
6.00-15	4.5-15	694	150	2,720	2,340	1,800
6.50-10	5.00F-10	574	160	2,720	2,340	1,800
180/60-10	5.00F-10	458	157	2,795	2,410	1,850
18x9-8	7.00-8	457	207	2,870	2,470	1,900
200/50-10	6.50F-10	456	197	2,870	2,470	1,900
21x8-9	6.00E-9	514	180	3,200	2,755	2,120
7.00-12	5.00S-12	650	172	3,380	2,920	2,240
23x9-10	6.50F-10	583	200	4,000	3,445	2,650
7.00-15	5.5-15	717	162	4,115	3,545	2,725
7.00-15	6.0-15	730	180	4,115	3,545	2,725

Resilient Tire Capacity Table						
Size	Rim	Overall Diameter	Section Width	Other Vehicles	Forklift 25km/h	
				Static	Load Wheel	Steering Wheel
23x10-12	8.00G-12	583	240	4,380	3,770	2,900
27x10-12	8.00G-12	670	235	4,530	3,900	3,000
28x9-15	7.0-15	692	225	4,530	3,900	3,000
7.50-15	6.0-15	745	194	4,530	3,900	3,000
7.50-16	6.0-16	753	205	4,645	4,000	3,075
315/45-12	10.00G-12	572	279	5,210	4,485	3,450
250-15	7.0-15	709	206	5,510	4,750	3,650
8.25-15	6.5-15	808	207	5,510	4,750	3,650
8.25-20	6.5-20	954	230	5,510	4,380	3,650
280/50-15	8.0-15	670	255	6,040	5,200	4,000
355/45-15	9.75-15	692	287	6,610	5,690	4,375
355/50-15	9.75-15	710	284	6,610	5,690	4,375
300-15	8.0-15	812	255	6,795	5,850	4,500
9.00-20	6.5-20	974	220	6,795	5,400	4,500
10.00-20	8.0-20	1,009	250	7,550	6,000	5,000
11.00-20	8.0-20	1,040	260	8,230	6,540	5,450
355/65-15	9.75-15	812	284	9,060	7,800	6,000
12.00-20	10.0-20	1,090	313	9,815	7,800	6,500
355/50-20	10.0-20	834	310	10,420	8,970	6,900
400/60-15	11.00-15	815	325	10,420	8,970	6,900
12.00-24	10.0-24	1,181	295	11,325	9,000	7,500
465/55-20	16.0-20	1,029	465	13,590	10,800	9,000
14.00-24	10.0-24	1,325	331	13,970	11,100	9,250
16.00-25	11.25-25	1,445	410	18,875	15,000	12,500

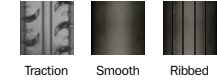
For guide purposes only, for design purposes please refer to the specific technical documents for the size in question

XP1000



Resilient tires

TREAD PATTERNS



Size	Alternative Size	Rim	Pattern	Tire type & Compound availability					● STD ■ LOC ▼ BOTH				Product Dimensions [mm]		Load Capacity [kg]		
				Multi Purpose	Non Marking	Electrically Conducting	ProTEX	ProHD	ProENERGY (HL)	Cut Resistant	Chemical Resistant	Heatshield	Overall Diameter	Section Width	Other	Counterbalanced Lift Trucks up to 25 km/h	
															Static	Load Wheel	Steering Wheel
3.00-4		2.10-4	Traction	●	●	●	●	●					252	84	295	260	195
3.00-4		2.50C-4	Traction	●	●	●	●	●					252	84	295	260	195
4.00-4		2.50C-4	Traction	●	●	●	●	●					307	92	625	535	410
4.00-8		3.00D-8	Traction	▼	▼	▼	▼	▼					405	109	1.100	950	730
4.00-8		3.75P-8	Traction	●	●	●	●	●					405	120	1.175	1.010	775
15x4½-8	125/75-8	3.00D-8	Traction	▼	▼	▼	▼	▼					373	114	1.210	1.040	800
15x4½-8	125/75-8	3.00D-8	Ribbed	▼	▼	▼	▼	▼					377	118	1.210	1.040	800
15x4½-8	125/75-8	3.25D-8	Traction	●	●	●	●	●					373	114	1.210	1.040	800
5.00-8		3.00D-8	Traction	▼	▼	▼	▼	▼					453	119	1.650	1.415	1.090
5.00-8		3.75P-8	Traction	●	●	●	●	●					453	144	1.740	1.495	1.150
16x6-8	150/75-8	4.33R-8	Traction	▼	▼	▼	▼	▼					410	153	1.740	1.495	1.150
17x7-8		4.33R-8	Smooth	●	●	●	●	●					430	159	2.160	1.860	1.430
18x7-8	180/70-8	4.33R-8	Traction	▼	▼	▼	▼	▼					451	153	2.490	2.145	1.650
18x7-8	180/70-8	4.33R-8	Smooth	▼	▼	▼	▼	▼					456	158	2.490	2.145	1.650
18x9-8		4.33R-8	Smooth	●	●	●	●	●					457	207	2.870	2.470	1.900
140/55-9	15x5.5-9	4.00E-09	Traction	▼	▼	▼	▼	▼					378	134	1.360	1.170	900
6.00-9		4.00E-09	Traction	▼	▼	▼	▼	▼					523	139	2.190	1.885	1.450
21x8-9	200/75-9	6.00E-09	Traction	▼	▼	▼	▼	▼					518	186	3.200	2.755	2.120
6.50-10		5.00F-10	Traction	▼	▼	▼	▼	▼					569	162	2.720	2.340	1.800
180/60-10		5.00F-10	Traction	▼	▼	▼	▼	▼					454	162	2.795	2.410	1.850
200/50-10		6.50F-10	Traction	▼	▼	▼	▼	▼					453	200	2.870	2.470	1.900
23x9-10	225/75-10	6.50F-10	Traction	▼	▼	▼	▼	▼					582	201	4.000	3.445	2.650
7.00-12		5.00S-12	Traction	▼	▼	▼	▼	▼					648	174	3.380	2.920	2.240
7.00-12		5.00S-12	Smooth	▼	▼	▼	▼	▼					650	172	3.380	2.920	2.240
23x10-12	250/60-12	8.00G-12	Traction	▼	▼	▼	▼	▼					577	240	4.380	3.770	2.900
23x10-12	250/60-12	8.00G-12	Smooth	▼	▼	▼	▼	▼					583	240	4.380	3.770	2.900
27x10-12	250/75-12	8.00G-12	Traction	▼	▼	▼	▼	▼					674	240	4.530	3.900	3.000
315/45-12		10.00G-12	Traction	▼	▼	▼	▼	▼					573	288	5.210	4.485	3.450
23x5-13		3.75P-13	Traction	▼	▼	▼	▼	▼					617	138	1.740	1.495	1.150
5.50-15		4.5-15	Traction	●	●	●	●	●					661	150	2.490	2.145	1.650

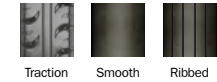


XP1000



Resilient tires

TREAD PATTERNS



Size	Alternative Size	Rim	Pattern	Tire type & Compound availability					● STD ■ LOC ▼ BOTH				Product Dimensions [mm]		Load Capacity [kg]		
				Multi Purpose	Non Marking	Electrically Conducting	ProTEX	ProHD	ProENERGY (HL)	Cut Resistant	Chemical Resistant	Heatshield	Overall Diameter	Section Width	Other	Counterbalanced Lift Trucks up to 25 km/h	
															Static	Load Wheel	Steering Wheel
6.00-15		4.5-15	Traction	●	●	●	●	●	●	●	●	●	692	158	2.720	2.340	1.800
7.00-15	29x8-15	5.5-15	Traction	▼	▼	▼	▼	▼	▼	▼	▼	▼	722	195	4.115	3.545	2.725
7.00-15	29x8-15	6.0-15	Traction	●	●	●	●	●	●	●	●	●	722	195	4.115	3.545	2.725
7.50-15		5.5-15	Traction	●	●	●	●	●	●	●	●	●	745	194	4.530	3.900	3.000
7.50-15		6.0-15	Traction	●	●	●	●	●	●	●	●	●	745	194	4.530	3.900	3.000
7.50-15		6.5-15	Traction	▼	▼	▼	▼	▼	▼	▼	▼	▼	745	194	4.530	3.900	3.000
8.25-15		5.5-15	Traction	●	●	●	●	●	●	●	●	●	805	210	5.360	4.615	3.550
8.25-15		6.5-15	Traction	▼	▼	▼	▼	▼	▼	▼	▼	▼	805	210	5.510	4.750	3.650
28x9-15	225/75-15 (8.15-15)	7.0-15	Traction	▼	▼	▼	▼	▼	▼	▼	▼	▼	687	222	4.530	3.900	3.000
250-15	250/70-15	7.0-15	Traction	▼	▼	▼	▼	▼	▼	▼	▼	▼	709	242	5.510	4.745	3.650
250-15	250/70-15	7.5-15	Traction	▼	▼	▼	▼	▼	▼	▼	▼	▼	709	242	5.510	4.745	3.650
300-15	315/70-15	8.0-15	Traction	▼	▼	▼	▼	▼	▼	▼	▼	▼	808	257	6.795	5.850	4.500
355/45-15	28x12½-15	9.75-15	Traction	▼	▼	▼	▼	▼	▼	▼	▼	▼	681	295	6.610	5.690	4.375
355/50-15		9.75-15	Traction	▼	▼	▼	▼	▼	▼	▼	▼	▼	712	295	6.610	5.690	4.375
355/65-15	32x12½-15 (350-15)	9.75-15	Traction	▼	▼	▼	▼	▼	▼	▼	▼	▼	818	295	9.060	7.800	6.000
400/65-15		11.00-15	Traction	●	●	●	●	●	●	●	●	●	815	325	10.420	8.970	6.900
7.50-16	250/80-16	5.5-16	Traction	●	●	●	●	●	●	●	●	●	753	205	4.645	4.000	3.075
9.00-20	270/95-20	6.5-20	Traction	●	●	●	●	●	●	●	●	●	985	232	6.795	5.400	4.500
9.00-20	270/95-20	7.0-20	Traction	●	●	●	●	●	●	●	●	●	985	232	6.795	5.400	4.500
10.00-20	290/95-20	6.5-20	Traction	●	●	●	●	●	●	●	●	●	1.028	262	7.365	5.850	4.875
10.00-20	290/95-20	7.5-20	Traction	●	●	●	●	●	●	●	●	●	1.028	262	7.550	6.000	5.000
10.00-20	290/95-20	7.5-20	Smooth	●	●	●	●	●	●	●	●	●	1.009	250	7.550	6.000	5.000
10.00-20	290/95-20	8.0-20	Traction	●	●	●	●	●	●	●	●	●	1.028	262	7.550	6.000	5.000
11.00-20	300/95-20	8.0-20	Traction	●	●	●	●	●	●	●	●	●	1.040	260	8.230	6.540	5.450
12.00-20	330/95-20	8.0-20	Traction	●	●	●	●	●	●	●	●	●	1.092	276	9.515	7.560	6.300
12.00-20	330/95-20	8.0-20	Smooth	●	●	●	●	●	●	●	●	●	1.090	260	9.515	7.560	6.300
12.00-20	330/95-20	8.5-20	Traction	●	●	●	●	●	●	●	●	●	1.092	276	9.515	7.560	6.300
12.00-20	330/95-20	8.5-20	Smooth	●	●	●	●	●	●	●	●	●	1.090	260	9.515	7.560	6.300
12.00-20	330/95-20	10.0-20	Traction	●	●	●	●	●	●	●	●	●	1.092	335	9.815	7.800	6.500
12.00-20	330/95-20	10.0-20	Smooth	●	●	●	●	●	●	●	●	●	1.090	312	9.815	7.800	6.500

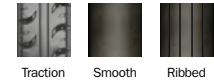


XP1000



Resilient tires

TREAD PATTERNS



Size	Alternative Size	Rim	Pattern	Tire type & Compound availability					● STD ■ LOC ▼ BOTH				Product Dimensions [mm]		Load Capacity [kg]				
				Multi Purpose	Non Marking	Electrically Conducting	ProTEX	ProHD	ProENERGY (HL)	Cut Resistant	Chemical Resistant	Heatshield	Overall Diameter	Section Width	Other	Counterbalanced Lift Trucks up to 25 km/h			
															Static	Load Wheel	Steering Wheel		
355/50-20		10.0-20	Traction	▼	▼	▼	▼	▼	▼	▼	▼	▼	▼	▼	833	335	10.420	8.970	6.900
355/50-20		10.0-20	Smooth	▼	▼	▼	▼	▼	▼	▼	▼	▼	▼	▼	834	310	10.420	8.970	6.900
465/55-20		16.0-20	Traction	●	●	●	●	●	●	●	●	●	●	●	1.020	464	13.590	10.800	9.000
12.00-24	330/95-24	8.5-24	Traction	●	●	●	●	●	●	●	●	●	●	●	1.185	315	10.120	8.040	6.700
12.00-24	330/95-24	10.0-24	Traction	●	●	●	●	●	●	●	●	●	●	●	1.185	315	11.325	9.000	7.500
14.00-24	385/95-24	10.0-24	Traction	●	●	●	●	●	●	●	●	●	●	●	1.321	335	13.970	11.100	9.250
14.00-25		11.25-25	Traction	●	●	●	●	●	●	●	●	●	●	●	1.334	373	14.850	11.800	9.825
16.00-25	445/95-25	11.25-25	Traction	●	●	●	●	●	●	●	●	●	●	●	1.445	410	18.875	15.000	12.500

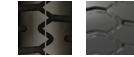


XP900



Resilient tires

TREAD PATTERNS



The second pattern is related to the 4 sizes with *



Size	Alternative Size	Rim	Pattern	Tire type & Compound availability ● STD ■ LOC ▼ BOTH	
				Multi Purpose	Non Marking
15x4½-8	125/75-8	3.00D-8	Traction	▼	▼
5.00-8		3.00D-8	Traction	▼	▼
16x6-8	150/75-8	4.33R-8	Traction	▼	▼
18x7-8	180/70-8	4.33R-8	Traction	▼	▼
140/55-9	15x5.5-9	4.00E-9	Traction	▼	▼
6.00-9		4.00E-9	Traction	▼	▼
21x8-9	200/75-9	6.00E-9	Traction	▼	▼
6.50-10		5.00F-10	Traction	▼	▼
200/50-10*		6.50F-10	Traction	▼	▼
23x9-10	225/75-10	6.50F-10	Traction	▼	▼
7.00-12		5.00S-12	Traction	▼	▼
23x10-12*	250/60-12	8.00G-12	Traction	▼	▼
27x10-12	250/75-12	8.00G-12	Traction	▼	▼
7.00-15	29x8-15	5.5-15	Traction	▼	▼
8.25-15		6.5-15	Traction	▼	▼
28x9-15	225/75-15 (8.15-15)	7.0-15	Traction	▼	▼
250-15	250/70-15	7.0-15	Traction	▼	▼
250-15	250/70-15	7.5-15	Traction	▼	▼
300-15	315/70-15	8.0-15	Traction	▼	▼
355/45-15*	28x12½-15	9.75-15	Traction	▼	▼
355/50-15*		9.75-15	Traction	▼	▼
355/65-15	32x12½-15 (350-15)	9.75-15	Traction	▼	▼

Product Dimensions [mm]		Load Capacity [kg]		
Overall Diameter	Section Width	Other	Counterbalanced Lift Trucks up to 25 km/h	
		Static	Load Wheel	Steering Wheel
380	115	1.210	1.040	800
451	121	1.650	1.415	1.090
412	151	1.740	1.495	1.150
457	146	2.490	2.145	1.650
381	130	1.360	1.170	900
528	142	2.190	1.885	1.450
516	188	3.200	2.755	2.120
571	165	2.720	2.340	1.800
457	194	2.870	2.470	1.900
583	208	4.000	3.445	2.650
657	168	3.380	2.920	2.240
575	230	4.380	3.770	2.900
676	230	4.530	3.900	3.000
723	186	4.115	3.545	2.725
813	203	5.510	4.750	3.650
700	206	4.530	3.900	3.000
713	211	5.510	4.745	3.650
713	211	5.510	4.745	3.650
814	241	6.795	5.850	4.500
692	287	6.610	5.690	4.375
713	283	6.610	5.690	4.375
818	300	9.060	7.800	6.000





Resilient tires

TREAD PATTERNS



Traction



Size	Alternative Size	Rim	Tire type & Compound availability ● STD ■ LOC ▼ BOTH		Product Dimensions [mm]		Load Capacity [kg]		
			Multi Purpose	Non Marking	Overall Diameter	Section Width	Other	Counterbalanced Lift Trucks up to 25 km/h	
							Static	Load Wheel	Steering Wheel
3.00-4		2.10-4	●	●	252	83	295	260	195
3.00-4		2.50C-4	●	●	252	83	295	260	195
4.00-8		3.00D-8	▼	▼	405	110	1.100	950	730
5.00-8		3.00D-8	▼	▼	453	122	1.650	1.415	1.090
15x4½-8	125/75-8	3.00D-8	▼	▼	375	121	1.210	1.040	800
16x6-8	150/75-8	4.33R-8	▼	▼	413	156	1.740	1.495	1.150
18x7-8	180/70-8	4.33R-8	▼	▼	450	162	2.490	2.145	1.650
140/55-9	15x5.5-9	4.00E-9	▼	▼	375	140	1.390	1.170	900
6.00-9		4.00E-9	▼	▼	523	148	2.190	1.885	1.450
21x8-9	200/75-9	6.00E-9	▼	▼	518	191	3.200	2.755	2.120
6.50-10		5.00F-10	▼	▼	570	167	2.720	2.340	1.800
200/50-10		6.50F-10	▼	▼	452	200	2.870	2.470	1.900
23x9-10	225/75-10	6.50F-10	▼	▼	578	202	4.000	3.445	2.650
7.00-12		5.00S-12	▼	▼	653	179	3.380	2.920	2.240
23x10-12	250/60-12	8.00G-12	▼	▼	575	242	4.380	3.770	2.900
27x10-12	250/75-12	8.00G-12	▼	▼	674	243	4.530	3.900	3.000
7.00-15	29x8-15	5.5-15	▼	▼	724	196	4.115	3.545	2.725
7.00-15	29x8-15	6.0-15	●	●	724	196	4.115	3.545	2.725
7.50-15		6.5-15	▼	▼	747	210	4.530	3.900	3.000
8.25-15		6.5-15	▼	▼	812	211	5.510	4.750	3.650
28x9-15	225/75-15 (8.15-15)	7.0-15	▼	▼	689	224	4.530	3.900	3.000
250-15	250/70-15	7.0-15	▼	▼	709	244	5.510	4.745	3.650
250-15	250/70-15	7.5-15	▼	▼	709	244	5.510	4.745	3.650
300-15	315/70-15	8.0-15	▼	▼	810	258	6.795	5.850	4.500
355/45-15	28x12.5-15	9.75-15	▼	▼	683	294	6.610	5.690	4.375
355/50-15		9.75-15	▼	▼	712	296	6.610	5.690	4.375
355/65-15	32x12.5-15 (350-15)	9.75-15	▼	▼	817	295	9.060	7.800	6.000
10.00-20	290/95-20	7.0-20	●	●	1.035	263	7.550	6.000	5.000
10.00-20	290/95-20	7.5-20	●	●	1.035	263	7.550	6.000	5.000
10.00-20	290/95-20	8.0-20	●	●	1.035	263	7.550	6.000	5.000
12.00-20	330/95-20	8.0-20	●	●	1.091	284	9.515	7.560	6.300
12.00-20	330/95-20	8.5-20	●	●	1.091	284	9.515	7.560	6.300



XP700



Resilient tires

TREAD PATTERNS



Traction



Size	Alternative Size	Rim	Tire type & Compound availability	Product Dimensions [mm]		Load Capacity [kg]		
			● STD ■ LOC ▼ BOTH	Overall Diameter	Section Width	Other	Counterbalanced Lift Trucks up to 25 km/h	
			Multi Purpose			Static	Load Wheel	Steering Wheel
15x4½-8	125/75-8	3.00D-8	▼	372	103	1.210	1.040	800
5.00-8		3.00D-8	▼	457	122	1.650	1.415	1.090
16x6-8	150/75-8	4.33R-8	▼	408	143	1.740	1.495	1.150
18x7-8	180/70-8	4.33R-8	▼	450	143	2.490	2.145	1.650
140/55-9	15x5.5-9	4.00E-9	▼	370	127	1.360	1.170	900
6.00-9		4.00E-9	▼	508	140	2.190	1.885	1.450
21x8-9	200/75-9	6.00E-9	▼	508	185	3.200	2.755	2.120
6.50-10		5.00F-10	▼	559	163	2.720	2.340	1.800
200/50-10		6.50F-10	▼	447	186	2.870	2.470	1.900
23x9-10	225/75-10	6.50F-10	▼	571	190	4.000	3.445	2.650
7.00-12		5.00S-12	▼	660	168	3.380	2.920	2.240
23x10-12	250/60-12	8.00G-12	▼	571	224	4.380	3.770	2.900
27x10-12	250/75-12	8.00G-12	▼	656	230	4.530	3.900	3.000
7.00-15		5.5-15	▼	711	178	4.115	3.545	2.725
8.25-15		6.5-15	▼	787	206	5.510	4.750	3.650
28x9-15	225/75-15 (8.15-15)	7.0-15	▼	686	204	4.000	3.445	2.650
250-15	250/70-15	7.0-15	▼	704	216	5.510	4.745	3.650
300-15	315/70-15	8.0-15	▼	812	254	6.795	5.850	4.500
355/65-15	32x12½-15(350-15)	9.75-15	▼	809	278	9.060	7.800	6.000
250-15	250/70-15	7.5-15	▼	704	216	5.510	4.745	3.650

TR-900



Radial pneumatic

TREAD PATTERNS



Traction



Size	Alternative Size	Rim	Product Dimensions [mm]			Minimal Dual Spacing [mm]	Inflation Pressure [bar]	Tire Type	Load Index	Speed Symbol	Load Capacity [kg]	
			Overall Diameter	Section Width	Tread Depth						Counterbalanced Lift Trucks up to 25 km/h	
											Load Wheel	Steering Wheel
5.00R8		3.00D-8	468	137	25	158	10,00	Tube Type	111	A5	1.415	1.090
6.00R9		4.00E-9	540	162	25	192	10,00	Tube Type	121	A5	1.885	1.450
6.50R10		5.00F-10	585	180	27	212	10,00	Tube Type	128	A5	2.340	1.800
7.00R12		5.00S-12	670	190	28	230	10,00	Tube Type	136	A5	2.915	2.240
28x9R15	225/75R15 (8.15R15)	7.0-15	706	230	25	248	10,00	Tube Type	149	A5	4.225	3.250
7.00R15	29x8R15	5.5-15	736	195	28	236	10,00	Tube Type	143	A5	3.540	2.725
250R15	250/70R15	7.0-15	736	252	27	282	10,00	Tube Type	153	A5	4.745	3.650
300R15	315/70R15	8.0-15	835	312	36	345	10,00	Tube Type	165	A5	6.695	5.150
8.25R15		6.5-15	838	232	32	281	10,00	Tube Type	153	A5	4.745	3.650
10.00R20	290/95R20	7.5-20	1.062	294	35	334	10,00	Tube Type	166	A5	6.890	5.300
12.00R20	330/95R20	8.5-20	1.136	320	41	378	10,00	Tube Type	176	A5	9.230	7.100
12.00R24	330/95R24	8.5-24	1.232	322	39	378	10,00	Tube Type	178	A5	9.750	7.500
14.00R24	385/95R24	10.0-24	1.416	390	64	450	10,00	Tube Type	193	A5	14.950	11.500

T-900 

Bias pneumatic

TREAD PATTERNS



Traction



Size	Alternative Size	Ply Rating	Rim	Product Dimensions [mm]			Minimal Dual Spacing [mm]	Inflation Pressure [bar]	Tire Type	Load Index	Speed Symbol	Load Capacity [kg]	
				Overall Diameter	Section Width	Tread Depth						Counterbalanced Lift Trucks up to 25 km/h	
												Load Wheel	Steering Wheel
5.00-8		10	3.00D-8	468	140	13	158	10,00	Tube Type	111	A5	1.415	1.090
18x7-8	180/70-8	16	4.33R-8	462	168	16	199	10,00	Tube Type	125	A5	2.145	1.650
6.00-9		12	4.00E-9	543	160	15	192	10,00	Tube Type	121	A5	1.885	1.450
23x9-10	225/75-10	20	6.50F-10	585	230	19	259	10,00	Tube Type	142	A5	3.445	2.650
6.50-10		12	5.00F-10	590	182	18	212	9,00	Tube Type	125	A5	2.145	1.650
23x10-12	250/60-12	20	8.00G-12	600	245	22	293	10,00	Tube Type	145	A5	3.770	2.900
7.00-12		14	5.00S-12	680	191	18	230	9,00	Tube Type	134	A5	2.755	2.120
7.00-12		16	5.00S-12	680	191	18	230	10,00	Tube Type	136	A5	2.910	2.240
27x10-12	250/75-12	16	8.00G-12	685	250	22	293	8,00	Tube Type	146	A5	3.900	3.000
27x10-12	250/75-12	24	8.00G-12	685	250	22	293	10,40	Tube Type	155	A5	5.040	3.875
28x9-15	225/75-15 (8.15-15)	14	7.0-15	710	230	18	248	10,00	Tube Type	146	A5	3.900	3.000
250-15	250/70-15	20	7.0-15	742	240	19	282	10,00	Tube Type	155	A5	5.040	3.875
7.00-15	29x8-15	14	5.5-15	760	204	20	236	8,80	Tube Type	140	A5	3.275	2.520
7.50-15		16	6.0-15	778	215	21	254	10,00	Tube Type	146	A5	3.900	3.000
7.50-16	250/80-16	12	6.00G-16	805	220	21	254	8,00	Tube Type	144	A5	3.630	2.790
300-15	315/70-15	20	8.0-15	840	290	23	345	9,00	Tube Type	164	A5	6.500	5.000
8.25-15		14	6.5-15	841	247	19	281	8,00	Tube Type	149	A5	4.225	3.250
8.25-15		16	6.5-15	841	247	19	281	9,30	Tube Type	152	A5	4.615	3.550
355/65-15	32x12½-15 (350-15)	24	9.75-15	843	334	29	407	10,00	Tube Type	170	A5	7.800	6.000
355/65-15	32x12½-15 (350-15)	32*	9.75-15	843	334	29	407	12,50	Tube Type	177	A5	9.490	7.300
9.00-20	270/95-20	14	7.0-20	1.015	265	27	311	9,00	Tube Type	160	A5	5.850	4.500
10.00-20	290/95-20	16	7.5-20	1.085	294	32	334	9,00	Tube Type	164	A5	6.500	5.000
11.00-20	300/95-20	18	8.0-20	1.110	302	33	352	10,00	Tube Type	170	A5	7.800	6.000
12.00-20	330/95-20	20	8.0-20	1.145	325	35	372	10,00	Tube Type	175	A5	8.970	6.900
12.00-20	330/95-20	24	8.0-20	1.145	325	35	372	10,40	Tube Type	178	A5	9.710	7.470
12.00-20	330/95-20	28	8.0-20	1.145	325	35	372	10,90	Tube Type	180	A5	10.400	8.000
12.00-24	330/95-24	20	8.5-24	1.245	320	35	378	10,00	Tube Type	178	A5	9.750	7.500
12.00-24	330/95-24	24	8.5-24	1.245	320	35	378	10,40	Tube Type	178	A5	9.945	7.650
14.00-24	385/95-24	24	10.00W-24	1.360	380	39	450	10,00	Tube Type	186	A5	12.350	9.500
14.00-24	385/95-24	24*	10.00W-24	1.360	380	39	450	10,00	Tubeless	186	A5	12.350	9.500
14.00-24	385/95-24	28	10.00W-24	1.360	380	39	450	10,40	Tube Type	186	A5	12.600	9.690

* Requires special rim & components, please check with your local Trelleborg representative



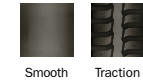
BATTERY AND ENGINE COUNTER BALANCED FORKLIFTS

PS1000



Press on solid

TREAD PATTERNS



Size	Metric Size	▼ Smooth ◆ Traction										Load Capacity [kg]						
		Multi Purpose		Non Marking		Electrically Conducting		ProHD		ProTEX		Other Vehicles			Counterbalanced Lift truck up to 25km/h			
		①	②	③	④	⑤	⑥	⑦	⑧	⑨	⑩	@ 6 km/h	@ 10 km/h	@ 16 km/h	Load Wheel	Steering Wheel		
10x4x6½	254x102x165	▼		▼		▼		▼		▼				780	640	555	565	465
10x5x6½	254x127x165	▼	◆	▼	◆	▼	◆	▼	◆	▼	◆			1.010	830	725	735	605
12x4½x8	305x114x203	▼	◆	▼	◆	▼	◆	▼	◆	▼	◆			1.045	860	745	760	620
13½x5½x8	343x140x203	▼	◆	▼	◆	▼	◆	▼	◆	▼	◆			1.510	1.240	1.080	1.095	895
14x4½x8	356x114x203	▼		▼		▼		▼		▼				1.170	960	830	850	695
14x5x10	356x127x254	▼		▼		▼		▼		▼				1.335	1.095	955	970	795
15x5x11¼	381x127x286	▼	◆	▼	◆	▼	◆	▼	◆	▼	◆			1.390	1.140	990	1.010	830
16x5x10½	406x127x267	▼	◆	▼	◆	▼	◆	▼	◆	▼	◆			1.510	1.240	1.080	1.095	895
16x6x10½	406x152x267	▼	◆	▼	◆	▼	◆	▼	◆	▼	◆			1.910	1.570	1.360	1.390	1.140
16x7x10½	406x178x267	▼		▼		▼		▼		▼				2.325	1.910	1.660	1.685	1.380
16¼x5x11¼	413x127x286	▼		▼		▼		▼		▼				1.530	1.250	1.090	1.105	905
16¼x6x11¼	413x152x286	▼	◆	▼	◆	▼	◆	▼	◆	▼	◆			1.920	1.580	1.370	1.395	1.140
16¼x7x11¼	413x178x286	▼		▼		▼		▼		▼				2.325	1.900	1.650	1.680	1.350
18x6x12½	457x152x308	▼	◆	▼	◆	▼	◆	▼	◆	▼	◆			2.100	1.720	1.500	1.525	1.250
18x7x12½	457x178x308	▼	◆	▼	◆	▼	◆	▼	◆	▼	◆			2.550	2.100	1.820	1.855	1.520
18x8x12½	457x203x308	▼		▼		▼		▼		▼				3.000	2.475	2.150	2.180	1.790
21x7x15	533x178x381	▼	◆	▼	◆	▼	◆	▼	◆	▼	◆			2.875	2.350	2.050	2.085	1.710
21x8x15	533x203x381	▼	◆	▼	◆	▼	◆	▼	◆	▼	◆			3.375	2.775	2.425	2.445	2.015
21x9x15	533x229x381	▼		▼		▼		▼		▼				3.900	3.200	2.775	2.830	2.320
22x8x16	559x203x406	▼		▼		▼		▼		▼				3.500	2.875	2.500	2.545	2.085
22x9x16	559x229x406	▼	◆	▼	◆	▼	◆	▼	◆	▼	◆			4.050	3.325	2.875	2.930	2.400
22x12x16	559x305x406	▼	◆	▼	◆	▼	◆	▼	◆	▼	◆			5.626	4.625	4.025	4.090	3.350
28x12x22	711x305x559	▼		▼		▼		▼		▼				6.740	5.540	4.820	4.900	4.015



Press on solid

TREAD PATTERNS



Size	Metric Size	▼ Smooth crowned (PL) ■ Smooth flat (FL) ◆ Traction flat (GL / GS)								Rolling resistance	Chemical Resistant	Cut Resistant	Load Capacity [kg]				
		Multi Purpose	Non Marking	Electrically Conducting	ProENERGY	Other Vehicles up to											
						@ 6 km/h			@ 25 km/h								
						@ 6 km/h	@ 10 km/h	@ 16 km/h	Load Wheel				Steering Wheel				
8½X4X4	216x102x102	▼										695	570	500	505	415	
8X4½X4½	203x114x114	▼										760	625	545	550	455	
9x5x5	229x127x127	■		■								960	790	680	695	570	
10x4x6¼	254x102x159	■		■				■				780	640	560	565	465	
10x4x6½	254x102x165	■		■				■				780	640	555	565	465	
10x5x6½	254x127x165	■		■						■		1.010	830	725	735	605	
10½x5x6½	267x127x165	■	◆	◆								1.070	880	770	780	640	
10X7X6¼	254x178x159	▼		▼								1.530	1.255	1.090	1.110	910	
12X4X8	305x102x203	▼		▼								900	740	645	655	535	
13½X4½X8	343x114x203	▼		▼								1.150	940	800	815	670	
13x3½x8	330x89x203	◆		◆								785	645	615	570	470	
13x4½x8	330x114x203	◆	■	◆	■							1.120	920	800	815	670	
13x5x8	330x127x203	◆		◆				◆				1.290	1.060	920	935	765	
13½x5½x8	343x140x203	■	◆	◆				◆				1.510	1.240	1.080	1.095	895	
14x4½x8	356x114x203	▼	■	◆	▼	■	◆			■	◆	1.170	960	830	850	695	
14x5x10	356x127x254	■		■								1.335	1.095	955	970	795	
15x5x11¼	381x127x286	■	▼	◆	■	▼	◆	■	◆	■	◆	1.390	1.140	990	1.010	830	
15x6x11¼	381x152x286	■	◆	◆								1.715	1.410	1.225	1.245	1.020	
15½x5x10	394x127x254	■	◆	◆								1.470	1.210	1.050	1.070	875	
15X8X11¼	381x203x286	▼		▼								2.385	1.960	1.705	1.735	1.420	
16X4X12¼	406x102x308	▼		▼								1.120	920	800	810	665	
16x5x10½	406x127x267	▼	■	◆	▼	■	◆			■	◆	1.510	1.240	1.080	1.095	895	
16x6x10½	406x152x267	▼	■	◆	▼	■	◆	■	◆	■	◆	1.910	1.570	1.360	1.390	1.140	
16x7x10½	406x178x267	◆		◆				◆		◆		2.325	1.910	1.660	1.685	1.380	
16¼x5x11¼	413x127x286	▼	■	◆	▼	■	◆			◆		1.530	1.250	1.090	1.105	905	
16¼x6x11¼	413x152x286	▼	■	◆	▼	■	◆	◆		■	◆	1.920	1.580	1.370	1.395	1.140	
16¼x7x11¼	413x178x286	◆		◆				◆		◆		2.325	1.900	1.650	1.680	1.380	
17x4½x12½	432x114x308	◆		◆								1.370	1.130	980	995	815	
17x5x12½	432x127x308	■	◆	◆								1.570	1.290	1.120	1.145	935	
17x6x12½	432x152x308	◆		◆								1.980	1.630	1.410	1.435	1.180	



Press on solid

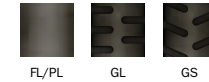
TREAD PATTERNS



Size	Metric Size	▼ Smooth crowned (PL) ■ Smooth flat (FL) ◆ Traction flat (GL / GS)								Load Capacity [kg]						
		Multi Purpose		Non Marking		Electrically Conducting		ProENERGY		Other Vehicles up to			@ 25 km/h			
		Rolling resistance	Chemical Resistant	Cut Resistant	@ 6 km/h	@ 10 km/h	@ 16 km/h	Load Wheel	Steering Wheel							
18x5x12½	457x127x308	■	◆	■	◆	■	◆	■	◆	■	◆	1.640	1.350	1.170	1.195	980
18x6x12½	457x152x308	▼	■	◆	▼	■	◆	◆	■	◆	2.100	1.720	1.500	1.525	1.250	
18x7x12½	457x178x308	■	▼	◆	■	▼	◆	◆	■	◆	2.550	2.100	1.820	1.855	1.520	
18x8x12½	457x203x308	▼	■	◆	▼	■	◆	◆	■	◆	3.000	2.475	2.150	2.180	1.790	
18x9x12½	457x229x308	■	◆	■	◆	◆	■	◆	■	◆	3.450	2.850	2.475	2.510	2.060	
21x6x15	533x152x381	◆	■	■	■	■	■	◆	■	◆	2.350	1.930	1.680	1.710	1.400	
21x7x15	533x178x381	▼	■	■	▼	■	■	■	■	■	2.875	2.350	2.050	2.085	1.710	
21x8x15	533x203x381	▼	■	◆	▼	■	◆	◆	■	◆	3.375	2.775	2.425	2.455	2.015	
21x9x15	533x229x381	■	◆	■	◆	■	◆	■	◆	■	3.900	3.200	2.775	2.830	2.320	
22x7x16	559x178x406	■	◆	■	◆	■	◆	■	◆	■	2.975	2.450	2.125	2.160	1.770	
22X7X17¼	558x178x451	■	■	■	■	■	■	■	■	■	2.835	2.330	2.025	2.060	1.690	
22x8x16	559x203x406	▼	■	◆	▼	■	◆	■	◆	◆	3.500	2.875	2.500	2.545	2.085	
22X8X17¼	559x203x451	■	■	■	■	■	■	■	■	■	3.275	2.690	2.340	2.380	1.950	
22x9x16	559x229x406	■	◆	■	◆	■	◆	■	◆	■	4.050	3.325	2.875	2.930	2.400	
22x10x16	559x254x406	■	◆	■	◆	■	◆	■	◆	■	4.575	3.750	3.250	3.315	2.720	
22x12x16	559x305x406	■	◆	■	◆	■	◆	■	◆	■	5.625	4.625	4.025	4.090	3.350	
22x14x16	559x356x406	■	■	■	■	■	■	■	■	■	6.700	5.505	4.785	4.865	3.990	
22x16x16	559x406x406	■	■	■	■	■	■	■	■	■	7.745	6.360	5.530	5.625	4.610	
22x6x17¼	559x152x451	■	■	■	■	■	■	■	■	■	2.345	1.925	1.675	1.700	1.395	
26x7x20	660x178x508	■	■	■	■	■	■	■	■	■	3.375	2.775	2.400	2.445	2.005	
28x10x22	711x254x559	■	■	■	■	■	■	■	■	■	5.470	4.490	3.905	3.970	3.255	
28x12x22	711x305x559	■	◆	■	◆	■	◆	■	◆	■	6.740	5.540	4.820	4.900	4.015	
28x14x22	711x356x559	■	■	■	■	■	■	■	■	■	8.020	6.590	5.720	5.820	4.780	
28x16x22	711x406x559	■	■	■	■	■	■	■	■	■	9.270	7.620	6.620	6.730	5.520	
40x12x30	1016x305x762	■	■	■	■	■	■	■	■	■	8.760	7.170	5.690	6.030	5.010	
40x14x30	1016x356x762	■	■	■	■	■	■	■	■	■	10.610	8.675	6.890	7.300	6.060	
40X16X30	1016x406x762	■	■	■	■	■	■	■	■	■	12.420	10.160	8.060	8.550	7.095	
40X20X30	1016x508x763	■	■	■	■	■	■	■	■	■	16.120	13.180	10.460	11.090	9.210	

Press on solid

TREAD PATTERNS



Size	▼ Smooth crowned (PL) ■ Smooth flat (FL) ◆ Traction flat (GL / GS)								
	Multi Purpose	Non Marking	Electrically Conducting	ProENERGY	Rolling Resistant	Wear Resistant	Chemical Resistant	Deflection Resistant	
125x50x75	■								
150x50x100	■	■			■				
150x75x100	■		■		■				
160x50x100	■		■		■				
186X70-120	■								
200x75x100	■	■			■				
200x85x105	■								
200X85-140	■	■							
200x130x105	■								
170x45x120					■				
180x75x120	■	■			■				
175x50x125					■				
200x50x140	■	■							
250x75x140	■	■	■		■	■		■	
250x130x140	■	◆	■	◆					
260x75x140	■					■		■	
280x75x140	■					■			
254x90x145	■	■							
250x90x150	■	■							
220x60x160	■				■				
230x75x170	■	■							
250x80x170	■	■	■		■			■	
250x105x170	■	■	■	■					
260x85x170	■	◆	◆	■	◆		■	■	■
260x105x170	■	◆	■	◆					
260x130x170	■	■							
300x85x170	■				■	■		■	
315x145x180	■								
330x145x180	■								
250x50x190	■								
250x85x190	■	■							
330x145x194	■								
300x90x203	■	■		■	■				
300x100x203	◆	■	◆	■	■	■			
313x130x203	■	◆	◆						
280x75x220	■		■		■				
285x75x220	■		■		■				
310x60x220	■		■						
300x75x225	■								
300x75x240	■		■		■				
360x60x270	■								
360x75x270	■								

Load Capacity [kg]				
Other Vehicles up to			Counterbalanced Lift Trucks up to 25 km/h	
@ 6 km/h	@ 10 km/h	@ 16 km/h	Load Wheel	Steering Wheel
160	130	100		
225	180	135		
375	300	230		
250	200	150		
375	310	270	275	225
500	400	300		
550	440	330		
490	405	350	355	295
880	725	660		
195	160	140		
475	380	290		
225	185	160		
350	280	210		
625	500	400		
1.065	875	800	775	635
630	510	385		
630	505	385		
670	545	395		
670	545	395		
450	360	270		
625	500	380		
675	540	410		
780	645	700	570	465
775	620	465		
825	675	615		
1.065	875	795		
800	640	480		
1.480	1.215	1.055		
1.540	1.265	1.100		
450	360	270		
745	595	455		
1.535	1.260	1.095		
900	720	540		
870	715	650	635	520
1.260	1.035	945		
705	565	425		
725	580	440		
650	520	390		
725	585	445		
700	560	420		
750	600	450		
950	760	570		



Press on solid

TREAD PATTERNS



Size	▼ Smooth crowned (PL) ■ Smooth flat (FL) ◆ Traction flat (GL / GS)								
	Multi Purpose	Non Marking	Electrically Conducting	ProENERGY	Rolling Resistant	Wear Resistant	Chemical Resistant	Deflection Resistant	
360x85x270	■	■			■	■			
450x120x300	■		■						
405x65x305	■	■			■				
405x130x305	■	◆	■		■				
405x220x305									
405x260x305	■	■			■				
415x75x305	■				■	■			
415x90x305	■	■							
415x100x305	■				■	■			
425x150x305	■	■	■		■	■			
425x260x305	■	■	■		■	■			
425x300x305					■				
450x260x305	■	■			■				
450x300x305	■				■				
440x200x330	■								
500x85x370	■				■				
500x100x370	■				■				
500x140x370	■	■			■				
500x280x370					■				
520x120x370	■		■						
550x120x410	■							■	
550x160x410	■				■	■			
610x100x410	■								
610x150x410	■								
620x200x410	■				■				
630x180x410	■	■			■				
645x250x410	■		■		■	■			
645x300x410	■	■			■	■			
645x350x410			■		■	■			
670x200x410					■				
680x150x470	■								
710x300x470					■				
645x200x480	■	■			■				
660x203x480	◆				◆	◆			
660x250x480	◆	◆							
660x280x480					■				
705x180x485	■								
760x250x500	■				■				
780x200x555	■	■			■				
840x350x559	■	■			■				
854x320x600	■	■			■				
926x240x670		■			■				
968x240x670					■				

Load Capacity [kg]				
Other Vehicles up to			Counterbalanced Lift Trucks up to 25 km/h	
@ 6 km/h	@ 10 km/h	@ 16 km/h	Load Wheel	Steering Wheel
1.050	840	630		
1.495	1.230	1.120		
900	720	540		
1.510	1.240	1.135	1.095	900
2.760	2.265	1.970		
3.325	2.730	2.495	2.415	1.980
1.000	800	590		
1.060	875	760		
1.115	915	835	810	665
1.910	1.570	1.435	1.385	1.135
3.620	2.970	2.720	2.630	2.155
4.200	3.450	3.000	3.050	2.500
3.620	2.965	2.585	2.865	2.350
4.265	3.490	3.045	3.375	2.765
2.710	2.225	2.030		
1.300	1.050	785		
1.270	1.040	955		
1.995	1.640	1.495		
4.535	3.725	3.405		
1.670	1.370	1.255	1.215	995
1.750	1.440	1.315	1.270	1.040
2.550	2.100	1.915	1.855	1.520
1.265	1.040	950		
2.505	2.055	1.880	1.815	1.490
3.790	3.110	2.840	2.745	2.250
3.300	2.710	2.475		
4.810	3.930	3.430	3.305	2.745
6.060	4.960	4.330	4.170	3.460
7.315	5.985	5.225	5.035	4.180
3.940	3.235	2.955		
2.690	2.210	2.020		
6.525	5.340	4.660		
3.865	3.175	2.900	2.800	2.295
3.695	3.025	2.645	2.545	2.110
4.780	3.910	3.415	3.290	2.735
5.510	4.510	3.580	3.795	3.150
3.590	2.950	2.695		
5.440	4.450	3.885	3.740	3.105
4.485	3.685	3.365	3.255	2.665
9.010	7.370	5.850	6.200	5.150
8.165	6.680	5.835		
5.970	4.885	4.265		
6.095	4.985	4.350		



BATTERY AND ENGINE COUNTER BALANCED FORKLIFTS

PS800



Press on solid

TREAD PATTERNS



Smooth Traction



Size	Metric Size	● Smooth ■ Traction		Load Capacity [kg]				
		Multi Purpose	Non Marking	Other Vehicles			Counterbalanced Lift Trucks up to 25 km/h	
				@ 6 km/h	@ 10 km/h	@ 16 km/h	Load Wheel	Steering Wheel
10x4x6½	254x102x165	●	●	780	640	555	565	465
10x5x6½	254x127x165	●	●	1.010	830	725	735	605
12x4½x8	305x114x203	●	●	1.045	860	745	755	620
12x5½x8	305x140x203	●	●	1.335	1.095	950	970	795
14x4½x8	356x114x203	●	●	1.170	960	830	850	695
14x5x10	356x127x254	●	●	1.335	1.095	955	970	795
15x4x11¼	381x102x286	●	●	2.735	2.245	1.915	775	635
15x5x11¼	381x127x286	●	●	1.390	1.140	990	1.010	830
16x5x10½	406x127x267	● ■	● ■	1.510	1.240	1.080	1.095	895
16x6x10½	406x152x267	● ■	● ■	1.910	1.570	1.360	1.390	1.140
16¼x4x11¼	413x102x286	● ■	● ■	1.920	1.580	1.370	1.395	1.140
16x7x10½	406x178x267	● ■	● ■	2.325	1.910	1.660	1.685	1.380
16¼x5x11¼	413x127x286	● ■	● ■	1.530	1.250	1.090	1.105	905
16¼x6x11¼	413x152x286	● ■	● ■	1.920	1.580	1.370	1.395	1.140
18x5x12½	457x127x308	●	●	1.640	1.350	1.170	1.195	980
18x6x12½	457x152x308	● ■	● ■	2.100	1.720	1.500	1.525	1.250
18x7x12½	457x178x308	● ■	● ■	2.550	2.100	1.820	1.855	1.520
18x8x12½	457x203x308	● ■	● ■	3.000	2.475	2.150	2.180	1.790
21x7x15	533x178x381	● ■	● ■	2.875	2.350	2.050	2.085	1.710
21x8x15	533x203x381	● ■	● ■	3.375	2.775	2.425	2.455	2.015
21x9x15	533x229x381	● ■	● ■	3.900	3.200	2.775	2.830	2.320
22x8x16	559x203x406	● ■	● ■	3.500	2.875	2.500	2.545	2.085
22x9x16	559x229x406	● ■	● ■	4.050	3.325	2.875	2.930	2.400
22x12x16	559x305x406	●	●	5.625	4.625	4.025	4.090	3.350
28x12x22	711x305x559	●	●	6.740	5.540	4.820	4.900	4.015

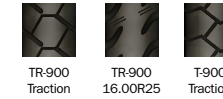


TR-900 / T-900

Pneumatic



TREAD PATTERNS



Size	Product	Rim	■ Traction					Alternative Size	Ply Rating	Product Dimensions [mm]			Inflation Pressure [bar]	Tire Type	Load Capacity [kg]					
			Straddle Carrier	RTG	Reach Stacker	Container Handler	Empty Container Handler			Overall Diameter	Section Width	Tread Depth			Load Index	Speed Symbol	Other Vehicles		Counterbalanced Lift Trucks up to 25 km/h	
																	RTG	Straddle Carrier @ 25km/h	Load Wheel	Steering Wheel
12.00-20	T-900	8.5-20					■	330/95-20	20	1.145	325	35	10	Tube Type	175	A5	-	-	8.970	6.900
12.00-20	T-900	8.5-20					■	330/95-20	24	1.145	325	35	10	Tube Type	178	A5	-	-	9.710	7.470
12.00-20	T-900	8.5-20					■	330/95-20	28	1.151	323	35	11	Tube Type	180	A5	-	-	10.400	8.000
12.00-24	T-900	8.5-24					■	330/95-24	20	1.245	320	35	10	Tube Type	178	A5	-	-	9.750	7.500
12.00-24	T-900	8.5-24					■	330/95-24	24	1.245	320	35	10	Tube Type	178	A5	-	-	9.945	7.650
14.00-24	T-900	10.00W-24		■	■	■	■	385/95-24	28	1.360	380	39	10	Tube Type	186	A5	12.600	-	12.600	9.690
12.00R20	TR-900	8.5-20					■	330/95-20	-	1.136	320	41	10	Tube Type	176	A5	-	-	9.230	7.100
12.00R24	TR-900	8.5-24					■	330/95R24	-	1.232	322	39	10	Tube Type	178	A5	-	-	9.750	7.500
14.00R24	TR-900	10.0-24			■	■	■	-	-	1.416	390	64	10	Tube Type	193	A5	-	-	14.950	11.500
16.00R25	TR-900	11.25-25/2.0	■					445/95R25	-	1.495	424	56	10	Tubeless	200	A5	-	14.700	18.200	14.000

Inflation pressure

- Most tire damages are due to, or aggravated by, incorrect inflation pressures.
- Under-inflation causes over-heating and can greatly shorten the life of a tire. It reduces stability and can cause irregular wear, internal damage and, ultimately, even tire break-up.
- Over-inflation causes the tire to be more susceptible to impact damage and in extreme cases may result in rim deformation or even a tire burst.
- Inflation pressures must be checked regularly at least once a fortnight - These checks should be made only when tires are cold because pressure rises as they warm up in running. Never bleed warm tires.
- Cold inflation pressures must always comply with the vehicle or tire manufacturer's recommendations for the vehicle, type of tire and the intended service. Pressure increase during running, which may reach or even exceed 20%, is normal and is allowed for in the design of the tire. Therefore the inflation pressure of warm tires must never be adjusted back to the recommended (cold) values.
- Note that the valve cap, which must be of the sealing type, acts as a supplementary air seal and should be fitted at all times.



CX940



Bias pneumatic

TREAD PATTERNS



Size	Product	Rim	● Smooth flat (FL) ■ Traction					Alternative Size	Ply Rating	Product Dimensions [mm]			Inflation Pressure [bar]	Tire Type	Load Capacity [kg]			
			Straddle Carrier	RTG	Reach Stackers	Container Handler	Empty Container Handler			Overall Diameter	Section Width	Tread Depth			Load Index	Speed Symbol	Static Load	Reach Stacker @ 25km/h
18.00-25	CX940	13.00/2.5		■	■	■	■		40	1.658	531	64	10	Tubeless	207	A5	26.250	17.500

Based on different application use ETRTO std

SR940



Radial pneumatic

TREAD PATTERNS



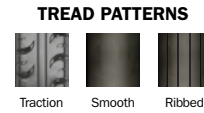
Size	Product	Rim	● Smooth flat (FL) ■ Traction					Alternative Size	Ply Rating	Product Dimensions [mm]			Inflation Pressure [bar]	Tire Type	Load Capacity [kg]			
			Straddle Carrier	RTG	Reach Stackers	Container Handler	Empty Container Handler			Overall Diameter	Section Width	Tread Depth			Load Index	Speed Symbol	Static Load	Reach Stacker @ 25km/h
480/95R25	SR940	13.00/2.5-25 11.25/2.0-2	■							1.565	469	51	10	Tubeless	208	A5	19.800	18.000



XP1000



Resilient tires

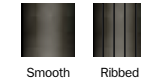


Size	Product	Rim	Pattern	Traction		Smooth Flat (FL)		Alternative size	Ply rating	Overall Diameter	Section Width	Tire Type	Load Index	Speed Index	Other Vehicles		Counterbalanced Lift Trucks up to 25 km/h	
				Terminal Trailer	Counterbalance Lift Trucks	Static	Load Wheel								Steering Wheel			
11.00-20	XP1000	8.0-20	Traction	■	●			330/95-20	-	1.040	260	Resilient	167	A5	8.230	6.540	5.450	
12.00-20	XP1000	8.0-20	Traction	■	●			330/95-20	-	1.092	276	Resilient	172	A5	9.515	7.560	6.300	
12.00-20	XP1000	8.5-20	Traction	■	●			330/95-20	-	1.092	276	Resilient	172	A5	9.515	7.560	6.300	
12.00-20	XP1000	10.0-20	Traction	■	●			330/95-20	-	1.092	335	Resilient	173	A5	9.815	7.800	6.500	
12.00-24	XP1000	8.5-24	Traction	■	●			330/95-24	-	1.185	315	Resilient	174	A5	10.120	8.040	6.700	
12.00-24	XP1000	10.0-24	Traction	■	●			330/95-24	-	1.185	315	Resilient	178	A5	11.325	9.000	7.500	
14.00-24	XP1000	10.0-24	Traction		●			385/95-24	-	1.321	335	Resilient	185	A5	13.970	11.100	9.250	
16.00-25	XP1000	11.25-25	Traction		●			445/95-25	-	1.445	410	Resilient	196	A5	18.875	15.000	12.500	





TREAD PATTERNS



Tire Size	Alternative Size	Rim Size	Pattern	Tire type & Compound availability					Load Index	Speed Symbol	Product Dimensions [mm]		Load Capacity [kg]
				● STD ■ LOC ▼ BOTH							Overall Diameter	Section Width	
				Kargo	Kargo NM	Kargo +	Kargo + HL	PBB					
8-2	8x2-4	1.2-4	Smooth	●	●	●			52	A5	195	50	200
3.00-4		2.10-4	Ribbed	●		●			51	A5	252	80	195
3.00-4		2.50C-4	Ribbed	●		●			51	A5	252	80	195
4.00-4		2.50C-4	Ribbed	●	●	●			77	A5	304	95	412
10-2	10x2-6	1.2-6	Smooth	●		●			56	A5	255	50	224
10½x4-6		3.25I-6	Ribbed	●		●			82	A5	267	102	470
140/55-6		4.50E-6	Ribbed	●		●			101	A5	312	133	825
2.00-8/2.50		2.50-8	Smooth	●		●	●		88	A2	309	103	225
4.00-8		2.50-8	Ribbed	●		●			97	A5	407	103	730
4.00-8		3.00D-8	Ribbed	●		●			97	A5	405	107	730
4.00-8		3.75P-8	Ribbed	●		●			99	A5	407	107	775
15x4½-8	125/75-8	3.00D-8	Ribbed	▼		▼			100	A5	380	105	800
5.00-8		3.00D-8	Ribbed	▼	●	▼			111	A5	458	113	1.090
5.00-8		3.75P-8	Ribbed	●		●			113	A5	456	119	1.150
18x7-8	180/70-8	4.33R-8	Ribbed	▼		▼			125	A5	452	147	1.650
16x5-9/3.50		3.50-9	Ribbed	●		●			102	A5	410	125	845
6.00-9		4.00E-6	Ribbed	▼		●			121	A5	530	142	1.450
6.50-10		5.00F-10	Ribbed	▼		▼			128	A5	572	158	1.800
7.00-12		5.00S-12	Ribbed	▼		▼			136	A5	653	165	2.240
26x8.5-15/7.00		7.00-15	Ribbed	●		●			144	A5	657	216	2.830
40x14-16/10.00		10.00-16	Smooth					●	184	A2	1.010	332	9.000
40x14-16/11.00		11.00-16	Smooth					●	185	A2	1.010	332	9.250





Press on solid

TREAD PATTERNS



Smooth



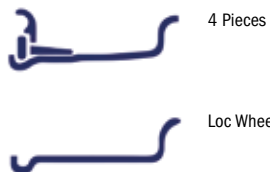
Tire Size	Rim Size	Pattern	Tire type & Compound availability ■ Smooth Flat		Product Dimensions [mm]		Load Capacity [kg]
			Multi Purpose	Boarding Bridge (PBB)	Overall Diameter	Section Width	Other Vehicles @ 25 km/h
365x160-220	160-220	Smooth	■		365	160	1.545
18x4x14	4.0-14	Smooth	■		457	102	1.005
28x10x22	10.0-22	Smooth	■		711	254	4.490
28x12x22	12.0-22	Smooth	■	■	711	305	5.540
28x14x22	14.0-22	Smooth	■	■	711	356	6.590
40x16x30	16.0-30	Smooth		■	1.025	406	10.160
40x20x30	20.0-30	Smooth		■	1.025	508	13.180

Lock Ring Wheels

Premium industrial wheels 8" - 15"

Diameter	Wheel Size	Tire Size
4"	2.50C-4	3.00-4
	2.50C-4	4.00-4
8"	3.00D-8	15x4½-8
	3.00D-8	4.00-8
	3.00D-8	5.00-8
	4.33R-8	16x6-8
	4.33R-8	18x7-8
9"	4.00E-9	140/55-9
	4.00E-9	6.00-9
	6.00E-9	21x8-9
10"	5.00F-10	180/60-10
	5.00F-10	6.50-10
	5.50F-10	6.50-10
	5.50F-10	7.50-10
	6.50F-10	200/50-10
	6.50F-10	23x9-10
12"	5.00S-12	6.00-12
	5.00S-12	7.00-12
	8.00G-12	23x10-12
	8.00G-12	27x10-12
	10.00G-12	315/45-12
15"	5.5-15	7.00-15
	5.5-15	7.50-15
	5.5-15	8.25-15
	6.0-15	7.00-15
	6.5-15	7.50-15
	6.5-15	8.25-15
	7.0-15	250-15
	7.0-15	28x9-15
	7.5-15	250-15
	8.0-15	300-15
	9.75-15	355/45-15
	9.75-15	355/50-15
9.75-15	355/65-15	
11.0-15	400/60-15	

Wheel configuration

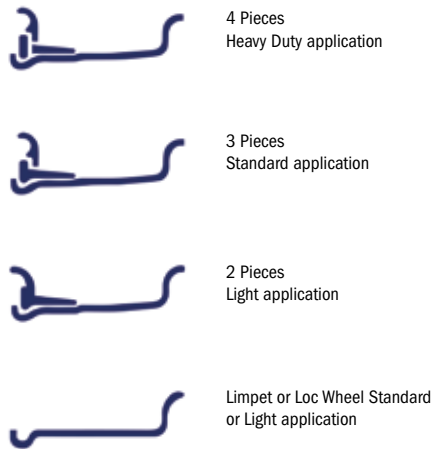


Lock Ring Wheels

Premium industrial wheels 20" - 24"

Diameter	Wheel Size	Tire Size
20"	6.5-20	8.25-20
	6.5-20	9.00-20
	7.0-20	10.00-20
	7.0-20	9.00-20
	7.5-20	10.00-20
	7.5-20	31x10-20
	7.5-20	31x12-20
	7.5-20	36x14-20
	8.0-20	10.00-20
	8.0-20	11.00-20
	8.0-20	12.00-20
	8.5-20	12.00-20
24"	10.0-20	12.00-20
	10.0-20	355/50-20
	10.0-20	40x14-20
	16.0-20	465/55-20
	8.5-24	12.00-24
	10.0-24	12.00-24
10.0-24	14.00-24	

Wheel configuration



Split Wheels

Premium industrial wheels 8" - 12"

Diameter	Wheel Size	Tire Size
8"	2.50C-8	4.00-8
	2.50C-8	15x4½-8
	3.00D-8	15x4½-8
	3.00D-8	4.00-8
	3.00D-8	5.00-8
	4.33R-8	18x7-8
9"	4.00E-9	140/55-9
	4.00E-9	6.00-9
10"	5.00F-10	180/60-10
	5.00F-10	6.50-10
12"	5.00S-12	6.00-12
	5.00S-12	7.00-12

Wheel configuration



LOCK RING
WHEELS
8"-15"

LOCK RING
WHEELS
20"-24"

SPLIT
WHEELS
8"-12"

Press On Band Wheels

Premium industrial wheels up to 30"

	Diameter	Wheel Size	Thickness
Min mm	160	50	4
Min inches	6	2	02
Max mm	1000	500	30
Max inches	30	20	1.2

Wheel configuration



Earthmover Wheels

Premium industrial wheels 25" - 33"

Diameter	Wheel Size	Tire Size
25"	11.25-25/2.0	16.00-25
	13.00-25/2.5	-
	14.00-25/1.5	17.5-25
	17.00-25/2.0	20.5-25
	19.50-25/2.5	23.5-25
	22.00-25/3.0	26.5-25
33"	25.00-25/3.5	29.5-25
	13.00-33/2.5	18.00-33

Wheel configuration

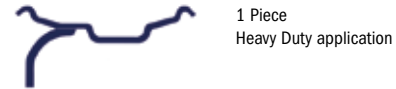


Drop Centre Wheels

Premium industrial wheels up to 30"

Diameter	Wheel Size	Tire Size
12"	7.0-12	23x8½-12
15"	7.0-15	27x8½-15
16.5"	8.25-16.5	10-16.5
	9.75-16.5	12-16.5
17.5"	10.50-17.5	14-17.5
19.5"	11.75-19.5	15-19.5

Wheel configuration



PRESS ON BAND WHEELS

EARTHMOVER WHEELS

DROP CENTRE WHEELS



Discover our website

Follow us



Yokohama TWS S.p.A.
Via Nazionale Tiburtina, 143 - 00019 Villa Adriana - Tivoli (RM), Italy
Phone: +39 0774 3841 – info.tws@yokohama-tws.com
www.trelleborg-tires.com