



EMR1042 Earthmover Radial Tires

PREMIUM RADIAL PNEUMATIC

Designed for articulated dumper and suitable for loader applications, our EMR1042 tire is the best choice for haulage operations in open pits and quarries and also suitable for infrastructure and building construction and landscaping.

The Trelleborg EMR range is designed to enhance productivity in critical construction applications, delivering both enhanced damage protection and durability. The multi surface tread design delivers control and perfect grip when it's needed the most, whether on sand, rock, gravel or soil.

The strong radial carcass and state of the art compound assure long life, while providing equal load distribution for a comfortable ride, maintaining low fuel consumption.

Main Benefits

- Superior traction
- Long tire life due to deep tread
- Excellent ride comfort
- Sidewall rubber ring guard protection
- Robust carcass to support eventual retreading*



**ALL-STEEL RADIAL
CONSTRUCTION**



**REINFORCED
CARCASS**



**MULTI
SURFACE**



**EXCELLENT
RIDE COMFORT**

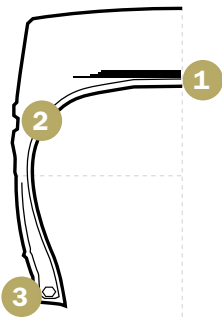


EMR1042

PREMIUM RADIAL PNEUMATIC



Superior tire technology for severe applications



1 Steel belt for increased carcass resistance



2 Side cut protection



3 Reinforced bead enables reduced downtime



Tire Size	Tread Pattern TRA	Rim Size (Permitted)	Tread Depth [mm]	Service Description LI/SS Transport/Loader	Tire Load Capacity (kg) 10 (km/h)	Tire Pressure (bar)	Tire Load Capacity (kg) 50 (km/h)	Tire Pressure (bar)
23.5 R 25	L4/E4	19.50/2.5-25	51	** 185 B/201 A2	14,500	5.75	9,250	4.50
26.5 R 25	L4/E4	22.00/3.0-25	54	** 193 B/209 A2	18,500	5.75	11,500	4.50
29.5 R 25	E4/L4	25.00/3.5-25	58	** 200 B/216 A2	22,400	5.75	14,000	4.50

** - Index of tire strength



Yokohama TWS S.p.A.
Via Nazionale Tiburtina, 143 - 00019 Villa Adriana - Tivoli (RM), Italy
Phone: +39 0774 3841 – info.tws@yokohama-tws.com
www.trelleborg-tires.com

Follow us

