

# Tires and Wheels for Light Service



AGRICULTURE



INDUSTRIAL



GOLF



GARDEN



# Tires for Light service

The tires for light service are designed for farming, industry, turf, snow and high speed service and are suitable for rims up to 15 inches in diameter.

In this product segment, Trelleborg has one of the largest ranges in the world.

Together with the wide range of wheels, Trelleborg can supply complete wheel solutions to customers, in high quality and perfect design.

## DRIVER



Green area tire for professional use.

## GARDENER



Green area tire for hobby machines.

## T49



High Speed tire with high shoulder profile.

## T63



Farming tire with traction pattern.

## T94



Industry tire with combined pattern.

## T310



Farming tire increasing efficiency during working operations due to its optimized groove depth and a smoother shape

## T411



Combined pattern for green area and farming.

## T412



Combined pattern for green area and farming.

## T413



Combined pattern for green area and farming.

## T415



Tire for small compact machines used for digging, drilling and loading.

## T421



Farming tire for ploughing and for mini loader.

## T430



Tire for agriculture and green areas with rounded shoulder profile for small dumpers and mini loaders

## T446



Farming tire with easy rolling pattern.

## T448



Farming tire with extra strong tread and easy rolling pattern.

## T462



Farming tire with traction pattern.



### T463



Combined tire for farming and green area.

### T501



High speed tire with easy rolling pattern.

### T510



Farming tire with easy rolling pattern.

### T513



Farming tire with extra good sidewall stability.

### T521



Smooth pattern tire for green area.

### T522



Industry, farming and green area tire with smooth pattern.

### T523



High Speed or industry tire with high shoulder.

### T528



Tire especially made for snow machines.

### T530



Industry tire with good grip and low roll resistance.

### T533



High Speed tire with combined pattern.

### T536



Farming tire with combined pattern.

### T537



Combined tire for green area, farming and industry.

### T539



Combined tire for green area, farming, industry or high speed service.

### T550



Skid Steer tire with good grip and comfort.

### T559 Turf Grip



Combined tire for green area, farming and industry.

### T560 ICE



For detachable chairlifts. Designed to perfectly work at very low temperature.

### T570



Skid Steer tire with good grip and comfort and long lifespan.

### T690



High Speed tire with high shoulder.

### T991



Industry and farming tire with rounded shoulder.

### HIGH GRIP



Tire for green areas with good grip.

### TRACTION



Farming tire with good grip.

# Technical specifications

## TIRES 4"

SIZE	PR/LI	TREAD PATTERN	MAIN RANGE OF USE	RIM	PERMITTED RIMS	OD mm +/-1,5%	SW mm +/-2%	MAX. AIR PRESSURE bar	MAX. LOAD kg	SPEED (km/h)	RC mm +/-2,5%
3.00-4	4	T991	Farming	2.10	2.5	260	88	3,5	105	30	772
	6	T991	Farming	2.10	2.5	260	88	5,0	135	30	772
	6	T530	Industrial	2.10	2.5	252	83	6,0	200	25	751
4.00-4	6	T991	Farming	2.50C	3.00	312	113	4,25	190	30	927
4.10-4	4	T510	Farming	2.10C	3.25A	276	104	2,8	165	30	820
4.10/3.50-4	6	T539	Industrial	2.10		272	89	6,9	210	25	808
11x4.00-4	2	T537S TL	Green Area	2.75A	3.25A	262	101	1,5	100	25	778
100/100-4	60A8/48A8	T539	Industrial	2.5		304	98	6,0	250	40	908

## TIRES 6"

SIZE	PR/LI	TREAD PATTERN	MAIN RANGE OF USE	RIM	PERMITTED RIMS	OD mm +/-1,5%	SW mm +/-2%	MAX. AIR PRESSURE bar	MAX. LOAD kg	SPEED (km/h)	RC mm +/-2,5%
3.50-6	4	T510	Farming	2.50A	2.50C	341	100	3,0	165	30	1013
100/85-6*	46	T513	Farming	2.50A-6	2.50C-6	338	105	2,8	165	30	1004
4.10/3.50-6	57J	T533 HS	High Speed	2.50A		320	94	4,5	230	100	950
4.00-6	6	T991	Farming	2.50A		358	108	4,3	250	30	1063
13x5.00-6	4	T539 TL	Green Area	3.50A		322	117	2,8	200	30	956
	6	T539 TL	Industrial	3.50A		320	122	4,1	250	30	989
	4	T510 TL	Farming	3.50A		326	119	2,8	200	30	968
	6	T510	Farming	3.50A		326	119	4,1	250	30	955
	2	GARDENER TL	Green Area	3.50		325	120	1,4	132	30	962
15x6.00-6	4	T510 TL	Farming	4.50A-6		368	160	2,1	257	30	1093
	6	T510 TT	Farming	4.50A-6		366	162	3,8	335	30	1087
	4	T539 Grip TL	Green Area/Farming	4.50A		370	161	2,1	225	30	1099
	2	GARDENER TL	Green Area	4.50		363	163	1,0	165	30	1070
100/65-6	24A8	T539 Grip TL	Green Area	3.00A		286	96	1,6	90	40	835
140-6	6	T539	Farming	4.50A		328	137	4,3	260	30	974
	6	T510	Industrial	4.50A		325	134	7,0	650	25	965
	10	T510	Industrial	4.50A		340	143	9,5	780	25	1004

\* Replaces item: 3.50-6TT 4 T513

## TIRES 8"

SIZE	PR/LI	TREAD PATTERN	MAIN RANGE OF USE	RIM	PERMITTED RIMS	OD mm +/-1,5%	SW mm +/-2%	MAX. AIR PRESSURE bar	MAX. LOAD kg	SPEED (km/h)	RC mm +/-2,5%
<b>3.00-8</b>	2	<b>T539 Grey</b>	Industrial	2.50A	2.10	358	86	2,4	140	25	1063
<b>3.50-8</b>	4	<b>T510</b>	Farming	2.50A	2.10	392	101	2,8	190	30	1164
	4	<b>T513</b>	Farming	2.50A	2.10	399	98	2,8	190	30	1185
	56J	<b>T501 HS</b>	High Speed	2.50A-8	2.1-8	500	255	4,3	224	100	1167
<b>4.00-8</b>	4	<b>T63</b>	Farming	2.50A	3.00	427	106	2,8	225	30	1277
	4	<b>T510</b>	Farming	2.50A	3.00	425	114	2,8	225	30	1236
	4	<b>T991</b>	Farming	2.50A	3.00	416	108	2,8	225	30	1236
	4	<b>T513</b>	Farming	2.50A	3.00	426	107	2,8	225	30	1271
	6	<b>T991</b>	Farming	2.50A	3.00	416	105	4,3	290	30	1233
	6	<b>T522</b>	Farming	2.50A	3.00	430	110	4,3	290	30	1265
	8	<b>T523</b>	Industrial	2.50	3.00/3.75	418	123	9,0	670	25	1240
	71J	<b>T49 HS</b>	High Speed	2.50A-8	3.00-8	423	121	6,3	345	100	1241
<b>5.00-8</b>	6	<b>T522</b>	Farming	3.00		450	130	3,6	387	30	1337
<b>16x6.50-8</b>	4	<b>T539 Grip TL</b>	Green Area	5.375I	5.50A	406	166	1,9	280	30	1206
	6	<b>T539</b>	Farming	5.375I-8	5.50A-8	410	174	3,0	365	30	1218
	73A8	<b>T510</b>	Farming	5.375I	5.50A	413	173	3,0	325	40	1221
	84A8/80B	<b>T510</b>	Green Area	5.375I	5.50A	406	172	5,1	500	40	1221
	2/49A6	<b>GARDENER TL</b>	Green Area	5.375		414	168	1,0	185	30	1221
	84	<b>T310</b>	Farming	5.375I	5.50A	406	172	5,1	500	40,5	1221
	73A8	<b>T310</b>	Farming	5.375I	5.50A	413	173	3,0	325	40	1221
<b>16.5x6.50-8</b>	64J	<b>T539 HS</b>	High Speed	5.375-8	5.50A-8	411	165	3,1	280	100	1224
	72J	<b>T539 HS TL</b>	High Speed	5.375I	5.50A	408	172	4,8	365	100	1212
<b>16x7.50-8</b>	4	<b>T537 TL</b>	Green Area	5.375	5.50A	430	180	2,1	335	30	1265
	4/70A6	<b>T539 TL</b>	Green Area	5.375I	5.00A	420	179	1,8	335	30	1240
<b>18x7.50-8</b>	2	<b>T539 TL</b>	Green Area/Farming	5.50	6.00	464	184	0,9	243	30	1372
<b>18x8.50-8</b>	4	<b>T539 TL</b>	Green Area/Farming	7.00I	6.50	472	222	1,5	375	30	1402
	6	<b>T539</b>	Farming	7.00I	6.50	466	222	2,8	475	30	1384
	6	<b>T510</b>	Farming	7.00I	6.50	463	225	2,8	475	30	1384
	8	<b>T570 TL</b>	Skid Steer	7.00I		450	213	3,2	580	15	
	8	<b>T415</b>	Industrial	7.00I-8	6.50-8	450	213	3,2	580	30	1347
	2/58A6	<b>GARDENER TL</b>	Green Area	7.00		455	214	0,7	236	30	1350
<b>18x9.50-8</b>	4	<b>T521 GT TL</b>	Green Area	7.00I		455	240	1,7	470	25	1348
	4/82A6	<b>DRIVER TL</b>	Professional	7.00		465	235	1,7	475	30	1347
<b>20x8.00-8</b>	4	<b>T539 TL</b>	Green Area	6.00		515	215	1,5	420	30	1517
<b>20x10.00-8</b>	2	<b>GARDENER TL</b>	Green Area	7.00		500	255	0,7	345	30	1463
	6	<b>T539</b>	Farming	8.50	8.00	529	264	2,4	670	30	1556
<b>170/60-8</b>	47A8/35A8	<b>HIGH GRIP TL</b>	Green Area	5.375		407	171	1,2	175	40	1195
<b>190-8</b>	8	<b>T537</b>	Industrial	5.50	6.00	424	175	5,9	575	25	1265
<b>200/65-8</b>	59A8/47A8	<b>HIGH GRIP TL</b>	Green Area	5.375	6.50	455	205	1,2	243	40	1360
<b>210/60-8</b>	83A8	<b>T415 TL</b>	Industrial	7.00	6.50	455	212	3,2	487	40	1347
<b>220/45-8</b>	70A8/58A8	<b>T510</b>	Farming	7.00I-8		410	220	2,4	335	40	1195
	70A8/58A8	<b>T310</b>	Farming	7.00I-8		410	220	2,4	335	40	1195
<b>220/60-8</b>	74A8/62A8	<b>T463 Plus</b>	Farming	7.00I-8	8.00-8	476	220	2,0	375	40	1392
<b>220/60-8</b>	83	<b>T510</b>	Farming	7.00I		464	222	2,8	487	40	1382

## TIRES 9"

SIZE	PR/LI	TREAD PATTERN	MAIN RANGE OF USE	RIM	PERMITTED RIMS	OD mm +/-1,5%	SW mm +/-2%	MAX. AIR PRESSURE bar	MAX. LOAD kg	SPEED (km/h)	RC mm +/-2,5%
<b>6.00-9</b>	6	<b>T522</b>	Farming	4.50	4.00E	560	174	3,0	500	30	1665
	10	<b>T522</b>	Farming	4.00E-9	4.50-9	564	164	5,0	670	30	1675
	10	<b>T991</b>	Farming	4.00E	4.50	542	182	5,0	670	30	1610
	99J	<b>T523 HS</b>	High Speed	4.00E	4.50	562	170	8,5	775	100	1669

## TIRES 10"

SIZE	PR/LI	TREAD PATTERN	MAIN RANGE OF USE	RIM	PERMITTED RIMS	OD mm +/-1,5%	SW mm +/-2%	MAX. AIR PRESSURE bar	MAX. LOAD kg	SPEED (km/h)	RC mm +/-2,5%
4.40-10	62J	T690 HS	High Speed	3.50		476	118	3,5	265	100	1414
5.0-10	8	T462 TL	Farming	4.00	3.50	537	144	5,2	670	30	1571
7.50-10	12	T991	Farming	5.50F-10	6.00F-10	670	224	5,0	1075	30	1990
	14	T523 TL	Industrial	5.50F		668	225	9,0	2180	25	1984
18x8.50-10	8	T570 TL	Skid Steer	7.00I		468	204	3,2	545	15	1391
20x8.00-10	4	T539 GT TL	Green Area	6.00I	7.00	512	204	1,7	412	30	1521
	6	T539 TL	Farming	6.00I		505	204	2,9	585	30	1500
	8	T570 TL	Skid Steer	6.00I		505	208	2,8	615	15	1532
20x10.00-10	6	T539 TL	Farming	7.00	8.50	512	242	2,4	650	30	1533
20.5x8.00-10	10	T539 TL	Farming	7.00		525	208	4,0	825	30	1573
110/100-10	84A8/72A8	T560 ICE TL	Ropeway	3.00B		474	110	5,0	500	40	1420
200/55-10	95	T430 TL	Farming	6.00	5.50/7.00	487	190	4,0	690	40	1448
250/50-10	79A8/67A8	HIGH GRIP TL	Green Area	8.50		504	251	1,2	437	40	1515

## TIRES 12"

SIZE	PR/LI	TREAD PATTERN	MAIN RANGE OF USE	RIM	PERMITTED RIMS	OD mm +/-1,5%	SW mm +/-2%	MAX. AIR PRESSURE bar	MAX. LOAD kg	SPEED (km/h)	RC mm +/-2,5%
6-12	4	T63 TL	Farming	4.00E	5.00	582	146	2,75	230	30	1729
10.0/75-12	10	T446 TL	Farming	9.00	7.00	690	255	3,9	1325	30	2049
23x8.50-12	4	T463 TL	Farming	7.00	7JA	570	213	1,8	500	30	1699
	104	T463 TL	Farming	7.00	7JA-12	572		4,0	900	40	1718
	6	T550 TL	Skid Steer	7.00I	7JA	589	211	3,4	820	10	1752
	10	T539	Farming	7.00I	7JA	568	212	4,0	900	30	1687
	10	T539 Grey	Scissor Lift	7.00		580	220	4,0	900	30	1758
23x10.50-12	4	T463 TL	Farming	8.5	7JA	572	275	1,4	600	30	1705
	10	T463 TL	Farming	7.00I	8.50I	574	272	3,6	1000	30	1705
	4	T539 TL	Green Area/Farming	7.00I	8.50I	580	269	1,4	550	30	1723
	6	T539 TL	Farming	7.00	8.50	571	247	2,2	800	30	1699
	6	T539 Grey TL	Industrial	7.00	8.50	571	247	2,2	800	30	1699
	4/91A6	DRIVER TL	Green Area	7.00	8.50	580	236	1,4	615	30	1719
	6/100A6	DRIVER TL	Green Area	7.00	8.50	580	238	2,2	800	30	1720
23x12.50-12	6	T539 TL	Industrial	10	10.50I	584	317	2,1	925	30	1734
26x12.00-12	4	T539 TL	Green Area	10.50I	9.50JA	658	322	1,4	800	30	1936
	8	T539 TL	Farming	10.50I	9.50JA	652	320	2,7	1150	30	1936
	8	T539 TT	Farming	10.50I-12	9.50JA-12	652	320	2,7	1150	30	1936
	4	T411 TL	Green Area/Farming	10.50I-12	9.50JA-12	646	318	1,4	800	30	1919
	4	T463 TL	Farming	10.50I	9.50JA	654	318	1,4	800	30	1942
	8	T463 TL	Farming	10.50I	9.50JA	654	318	2,7	1150	30	1942
220/60-12 (23x8.50-12)	88A8/76A8	T539 Soft Grip TL	Green Area	7.00I	7JA	578	224	2,0	560	40	1736
300/65-12	118A8	T446 TL	Farming	9.00		687	303	2,6	1250	30	2040
320/60-12	132A8	T421 TT/TL	Farming	10.50I		689	320	4,0	2000	40	2049
	132A8	T421 Grey TL	Industrial	10.50I		689	320	4,0	2000	40	2049
560x140-12	100	T528	Snow Groomer	3.00B-12		556	143	8,0	800	20	1705

## TIRES 13"

SIZE	PR/LI	TREAD PATTERN	MAIN RANGE OF USE	RIM	PERMITTED RIMS	OD mm +/-1,5%	SW mm +/-2%	MAX. AIR PRESSURE bar	MAX. LOAD kg	SPEED (km/h)	RC mm +/-2,5%
23x5(23x5.00-13)	10	T94 TL	Industrial	4.50	3.75	635	155	8,5	1500	25	1913
610x145-13	112	T528	Snow Groomer	4.00		609	150	7,5	1120	20	1856

## TIRES 14"

SIZE	PR/LI	TREAD PATTERN	MAIN RANGE OF USE	RIM	PERMITTED RIMS	OD mm +/-1,5%	SW mm +/-2%	MAX. AIR PRESSURE bar	MAX. LOAD kg	SPEED (km/h)	RC mm +/-2,5%
645x160-14	120	T528	Snow Groomer	4JA-14		645	160	7,0	1400	20	1953

## TIRES 14.5"

SIZE	PR/LI	TREAD PATTERN	MAIN RANGE OF USE	RIM	PERMITTED RIMS	OD mm +/-1,5%	SW mm +/-2%	MAX. AIR PRESSURE bar	MAX. LOAD kg	SPEED (km/h)	RC mm +/-2,5%
200/60-14.5	10	T448 Extra	Farming	6.75	8.00	620	206	5,0	950	30	1841
	10	T536	Farming	6.75	8.00	628	204	5,0	950	30	1865

## TIRES 15"

SIZE	PR/LI	TREAD PATTERN	MAIN RANGE OF USE	RIM	PERMITTED RIMS	OD mm +/-1,5%	SW mm +/-2%	MAX. AIR PRESSURE bar	MAX. LOAD kg	SPEED (km/h)	RC mm +/-2,5%
7.00-15	6	TRACTION	Farming	4.50		730	175	2,5	1150	30	2140
11L-15	12	T510 TL	Farming	W8		777	285	3,6	1450	40	
29x12.50-15	4	T411	Green Area/Farming	10		743	308	1,3	600	50	2207
29x13.50-15	4	T411	Green Area/Farming	10		731	334	1,4	600	50	2171
31x15.50-15	8	T412 TL	Farming	13		818	402	3,1	1250	50	2429
33x12.50-15	6	T413 TL	Green Area/Farming	10		846	320	1,9	1215	50	2513
33x15.50-15	6	T412 TL	Green Area/Farming	13		842	395	1,5	1250	50	2501
	8	T412 TL	Farming	13		842	395	2,0	1600	50	2501
320/70-15*	122	T539	Industrial	10LB		835	340	2,0	1500		2550
320/55-15	123A8	T559 Turf Grip	Green Area/Farming	10LB	9.00	730	320	2,8	1550	40	2190
	133A8/121A8	T421 TL	Industrial	10LB	9.00	735	315	4,0	2060	40	2200
380/60-15	114A8	T539 Soft Grip TL	Green Area	10.00	12.00	829	375	1,2	1180	40	2440
400/50-15	135A8	T463 TL	Farming	13LB		795	400	3,2	2180	40	2351
690x180-15	100A8	TRACTION	Farming	4.50E		685	179	3,3	800	40	2034

\* Replaces item: 315/7515-TL 126A5 T539 SOFT GRIP

TL = Tubeless.  
LI = Load index.  
RC = Rolling circumference = Calculated values.

# Cross-ply Tires Twin Garden

**T404**



Specially designed for grass and sensitive ground conditions. Its soft carcass design, considerate tread pattern and low ground pressure all contribute to no track formation and very little soil compaction. This tire is also flexible for both soft and hard surfaces.

## TIRES 17.5"

SIZE	New tire		Tire in service		SLR mm	RC mm	RIM	TYPE	SPEED (km/h)	MAX. AIR PRESSURE bar	MAX. LOAD kg
	SW mm	OD mm	SW max mm	OD max mm							
<b>400/55-17.5</b> 108A8 <b>T404</b>	400	870	420	892	410	2640	AG11.75	TL	50	1,2	900
									<b>40</b>	1,2	<b>1000</b>
									25	1,2	1190
									10	1,4	1400

## TIRES 22.5"

SIZE	New tire		Tire in service		SLR mm	RC mm	RIM	TYPE	SPEED (km/h)	MAX. AIR PRESSURE bar	MAX. LOAD kg
	SW mm	OD mm	SW max mm	OD max mm							
<b>400/55-22.5</b> 111A8 <b>T404</b>	400	1000	420	1021	455	3000	AG11.75	TL	50	1,2	985
									<b>40</b>	1,2	<b>1090</b>
									25	1,2	1300
									10	1,4	1530

## TIRES 30.5"

SIZE	New tire		Tire in service		SLR mm	RC mm	RIM	TYPE	SPEED (km/h)	MAX. AIR PRESSURE bar	MAX. LOAD kg
	SW mm	OD mm	SW max mm	OD max mm							
<b>600/60-30.5</b> 142A8 <b>T404</b>	600	1500	630	1536	668	4380	AG20.00	TL	50	1,2	2385
									<b>40</b>	1,2	<b>2650</b>
									25	1,2	3155
									10	1,4	3710

Load data in the table is valid for only one tire only.  
Reference speed, load and inflation pressure are shown in **bold**.

**TL** = Tubeless. Tubes are not suitable for use in Garden Tractor tires.

**Tires for gentle service on green areas.**

**25** = 25 km/h concerns service on green areas on road.

**40** = 40 km/h concerns service on road only.



# Load Index

The Load Index (LI) is an international code, indicating the maximum load for a tire independent of its type or size.

LI	KG	LI	KG	LI	KG
1	46	51	195	101	825
2	47	52	200	102	850
3	49	53	206	103	875
4	50	54	212	104	900
5	51	55	218	105	925
6	53	56	224	106	950
7	54	57	230	107	975
8	56	58	236	108	1000
9	58	59	243	109	1030
10	60	60	250	110	1060
11	61	61	257	111	1090
12	63	62	265	112	1120
13	65	63	272	113	1150
14	67	64	280	114	1180
15	69	65	290	115	1215
16	71	66	300	116	1250
17	73	67	307	117	1285
18	75	68	315	118	1320
19	77	69	325	119	1360
20	80	70	335	120	1400
21	82	71	345	121	1450
22	85	72	355	122	1500
23	87	73	365	123	1550
24	90	74	375	124	1600
25	92	75	387	125	1650
26	95	76	400	126	1700
27	97	77	412	127	1750
28	100	78	425	128	1800
29	103	79	437	129	1850
30	106	80	450	130	1900
31	109	81	462	131	1950
32	112	82	475	132	2000
33	115	83	487	133	2060
34	118	84	500	134	2120
35	121	85	515	135	2180
36	125	86	530	136	2240
37	128	87	545	137	2300
38	132	88	560	138	2360
39	136	89	580	139	2430
40	140	90	600	140	2500
41	145	91	615	141	2575
42	150	92	630	142	2650
43	155	93	650	143	2725
44	160	94	670	144	2800
45	165	95	690	145	2900
46	170	96	710	146	3000
47	175	97	730	147	3075
48	180	98	750	148	3150
49	185	99	775	149	3250
50	190	100	800	150	3350

# Speed Index

The Speed Index (SI) is an international code indicating the maximum speed for which a tire is designed.

SI	Speed	SI	Speed	SI	Speed
A2	10 km	A7	35 km	E	70 km
A3	15 km	A8	40 km	F	80 km
A4	20 km	B	50 km	G	90 km
A5	25 km	C	60 km	J	100 km
A6	30 km	D	65 km	K	110 km

# Wheels and Rims for Light Service Tires

The Trelleborg range of wheels and rims, is available from 3" to 16" in size and can be supplied in many different configurations depending on application, requirements for load capacity and several other values influencing the design.

The wheels and rims are designed with different specifications – ie. sizes, integral hubs, bearings, bores, offsets, plate thickness, paint finish etc. that match the performance requirements defined.

## Rims and Wheels available

The table contains the product range available in term of dimensions, widths and configurations. The columns welded/divided indicate whether the specific size of rim/wheel is available as welded version

and/or as assembled version. While the columns hub/bore indicate if the size (dimension/width) is available as wheel (hub) and/or rim (bore).

Rim/Wheel width	Dimension	Welded	Divided	Hub	Bore
1.50-3D	3 Inches		●	●	
2.10AX4	4 Inches	●		●	
2.10-4D	4 Inches		●	●	
2.50-4D	4 Inches		●	●	
2.75AX4	4 Inches	●		●	
6.35-4D	4 Inches		●	●	
3.00AX5	5 Inches	●		●	
2.50AX6	6 Inches	●		●	
2.50AX6	6 Inches	●			●
2.50-6D	6 Inches		●		●
3.25-6D	6 Inches		●		●
3.50AX6	6 Inches	●		●	
3.50AX6	6 Inches	●			●
3.50-6D	6 Inches		●		●
4.00AX6	6 Inches	●		●	
4.50AX6	6 Inches	●		●	
4.50AX6	6 Inches	●			●
4.50-6D	6 Inches		●	●	●
4.50-6D	6 Inches		●		●
7.00AX6	6 Inches	●		●	
1.40-8D	8 Inches		●		●
2.125-8D	8 Inches		●	●	
2.125-8D	8 Inches		●		●
2.50AX8	8 Inches	●		●	
2.50AX8	8 Inches	●			●
2.50C-8D	8 Inches	●	●		●
3.00DX8	8 Inches	●		●	
3.00DX8	8 Inches	●			●
3.00D-8D	8 Inches		●	●	
3.00D-8D	8 Inches		●		●
3.75I-8D	8 Inches		●		●
4.25I-8D	8 Inches		●		●
4.33R-8D	8 Inches		●		●
4.375X8	8 Inches	●		●	
4.375X8	8 Inches	●			●
5.375-8D	8 Inches		●	●	

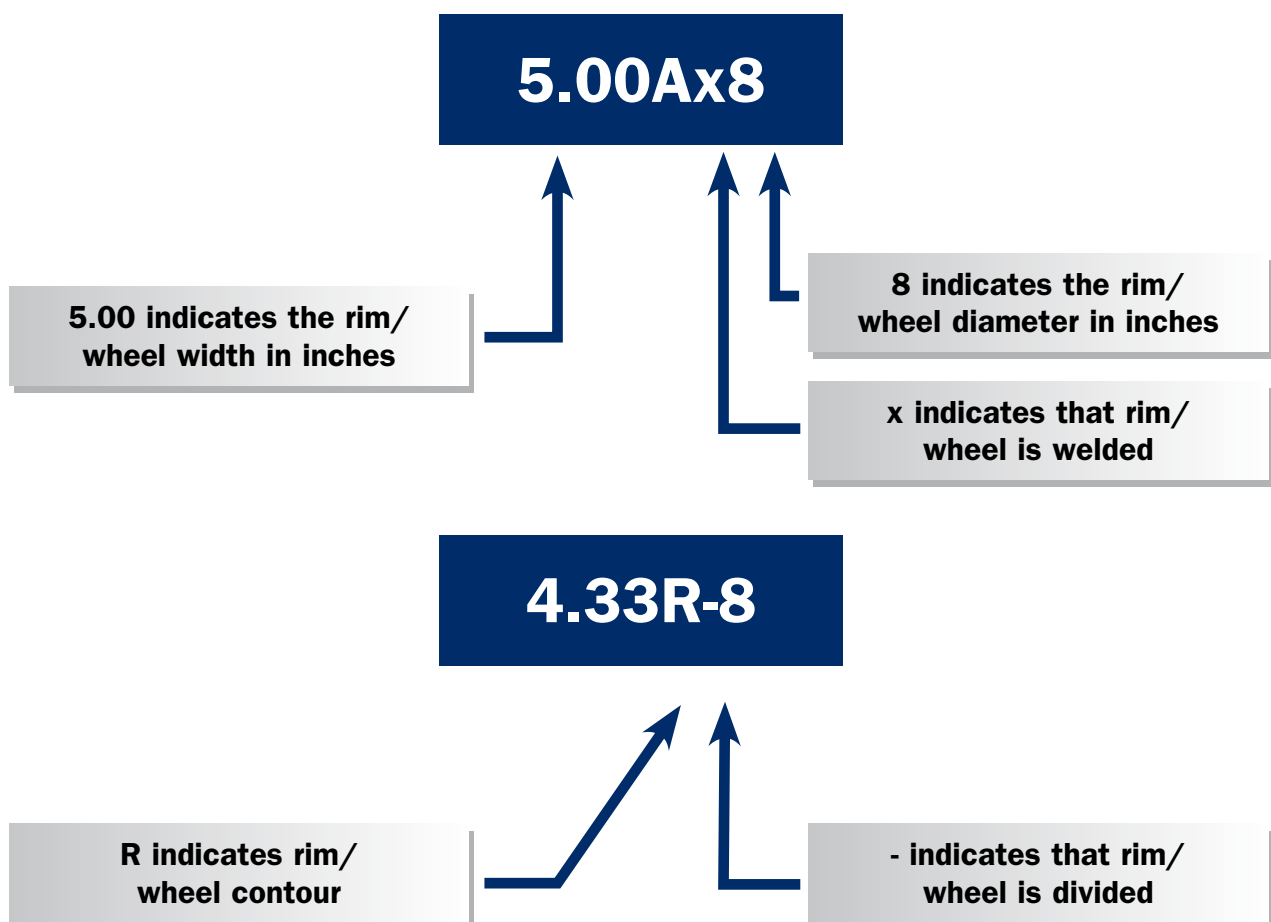
Rim/Wheel width	Dimension	Welded	Divided	Hub	Bore
5.375X8	8 Inches	●		●	
5.375X8	8 Inches	●			●
5.50-8D	8 Inches		●		●
5.50AX8	8 Inches	●		●	
5.50AX8	8 Inches	●			●
7.00IX8	8 Inches	●		●	
7.00IX8	8 Inches	●			●
7.00-8D	8 Inches		●		●
8.50AX8	8 Inches	●			●
4.00EX9	9 Inches	●		●	
4.00EX9	9 Inches	●			●
4.00-9D	9 Inches		●	●	
4.00-9D	9 Inches		●		●
6.00E-9D	9 Inches		●		●
3.00BX10	10 Inches	●			●
3.50IX10	10 Inches	●		●	
3.50IX10	10 Inches	●			●
5.00F-10	10 Inches		●	●	
5.00F-10	10 Inches		●		●
5.50F-10	10 Inches		●		●
5.50F-10	10 Inches		●	●	
6.00IX10	10 Inches	●		●	
6.00IX10	10 Inches	●			●
6.00-10	10 Inches		●		●
7.00IX10	10 Inches	●			●
8.25IX10	10 Inches	●			●
8.50IX10	10 Inches	●			●
3.00IX12	12 Inches	●		●	
3.00IX12	12 Inches	●			●
4.00IX12	12 Inches	●		●	
4.00IX12	12 Inches	●			●
4.25IX12	12 Inches	●		●	
4.25IX12	12 Inches	●			●
5.00S-12	12 Inches		●		●
7.00IX12	12 Inches	●		●	
7.00IX12	12 Inches	●			●
9.00IX12	12 Inches	●		●	
9.00IX12	12 Inches	●			●
8.50IX12	12 Inches	●			●
10.50IX12	12 Inches	●			●
4.50IX13	13 Inches	●		●	
5.50EX14	14 Inches	●		●	
5.50EX14	14 Inches	●			●
6.00JX14	14 Inches	●			●
6.75X14.5	14.5 Inches	●		●	
6.75X14.5	14.5 Inches	●			●
3.00JX15	15 Inches	●			●
4.00JX15	15 Inches	●		●	
4.00JX15	15 Inches	●			●
4.50JX15	15 Inches	●		●	
4.50JX15	15 Inches	●			●
5.00JX15	15 Inches	●			●
5.50JX15	15 Inches	●		●	
6.00JX15	15 Inches	●			●
9.00X15	15 Inches	●		●	
10.00LBX15	15 Inches	●			●
13.00LBX15	15 Inches	●			●
4.00EX16	16 Inches	●			●
5.50EX16	16 Inches	●			●
9.00EX16	16 Inches	●		●	

# Technical information about rims and wheels

## Size

The first figure specified for a rim or wheel indicates its width in inches. The last figure indicates its diameter in inches. The letter after the first figure

indicates the contour of the rim or wheel. The symbol after the letter indicates whether it has been assembled or welded.



# The difference between a rim and a wheel

## Rim

A rim consists of two drop-centred disc or two flat-based disc with a bore, welded or assembled.

The rim is fitted onto a hub and therefore it is vital that the diameter of the pitch circle of the stud holes is the same on the rim as on the hub.

The standard stud holes are pressed with a conical stud seat of 60°, 80° and 90° both for welded and assembled rims.

A wide range of bores are available so that rims can be supplied with a bore to meet your specific demands.



## Wheel

A wheel consists of two drop-centred disc welded together or two flat-based disc assembled, and an integral hub.

A wide range of integral hubs is available making it possible also to place the hub in an offset position.



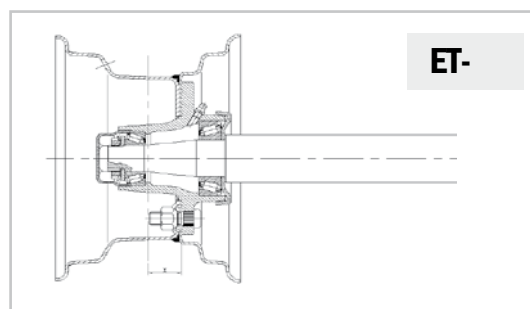
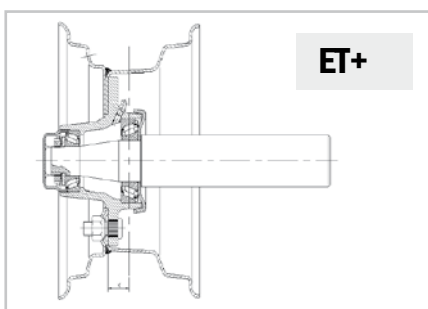
## Offset

The offset is measured from the centre of the rim/wheel to the hub side of the inner plate.

The offset can be positive (+) or negative (-).

Two more conditions must be fulfilled before we are able to make an offset. It is necessary that the dimension and the disc contour are the same on both disc.

Therefore wheels can be designed specifically for the functions required by your construction.



## The paint finish

Trelleborg uses a fully automated phosphating and powder painting facility which gives the products a perfect finish and allows the choice of more than

fifty different RAL colours. Furthermore, there is the possibility to choose your own colour outside this range when ordering a large number of units.

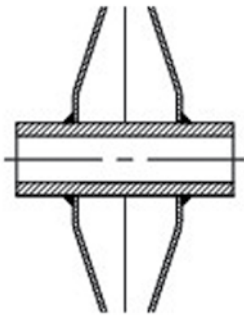
## Integrated hub types

The integrated hubs are designed to match the axle specifications and the required load capacities.

The hubs can be designed with a number of

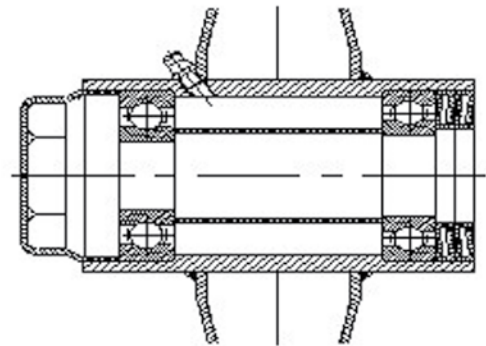
different bearings, lubrication nipples, stub axles, seals, caps, axles and other features or have a more plain design.

Examples of integrated hubs types available



**Type of hub: hub PL**

**Bearing: none/with key-way**



**Type of hub: hub EK**

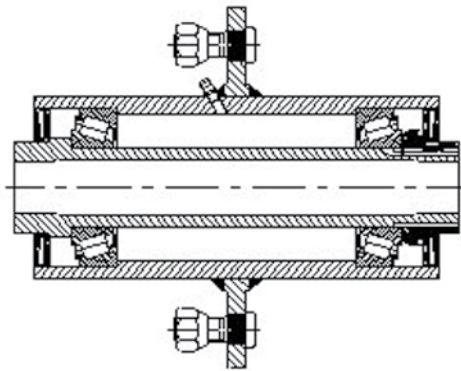
**Bearing: ball bearing**

# Hub types and axles

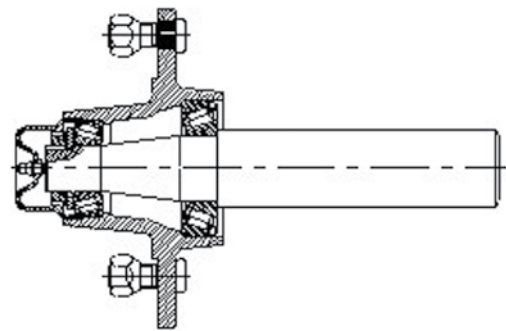
Trelleborg also produces a wide range of hubs and stub axles (up to a length of 600 mm). The hubs are designed with a flange of different size and bores matching the rim specifications.

Furthermore the hubs can be designed with a number of different bearings, lubrication nipples, seals, caps, axles and other features.

Examples of hubs available



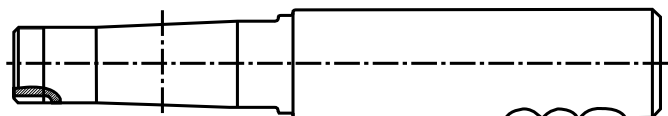
**Type of hub: hub GC**  
**Hub for fork mounting.**  
**Possible to get different sizes.**  
**Bearing: ball bearings or tapered roller bearings**



**Type of hub: cast hub EC**  
**Possible to get different sizes with suitable axles.**  
**Bearing: ball bearings or tapered roller bearings**

The axles produced are designed to match the hub of the wheel and the construction on which the axles are mounted.

Example of axles available



Trelleborg is available for information about design of wheels, rims, hubs and axles to match the requirements of your construction.



Discover our website

Follow us

