



TRELLEBORG

TYRES AND WHEELS FOR LIGHT SERVICE



Trelleborg. Tyres for Light Service

The tyres for light service are designed for farming, industry, turf, snow and high speed service and are suitable for rims up to 15 inches in diameter.

In this product segment, Trelleborg has one of the largest ranges in the world.

Together with the wide range of wheels, Trelleborg can supply complete wheel solutions to customers, in high quality and perfect design.

T49



High Speed tyre with high shoulder profile.

T63



Farming tyre with traction pattern.

T94



Industry tyre with combined pattern.

T411



Combined pattern for green area and farming.

T412



Combined pattern for green area and farming.

T413



Combined pattern for green area and farming.

T421



Farming tyre especially made for ploughing.

T439



Farming and green area tyre with round shoulder profile.

T446



Farming tyre with easy rolling pattern.

T448



Farming tyre with extra strong tread and easy rolling pattern.

T462



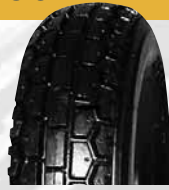
Farming tyre with traction pattern.

T463



Wide farming, garden and snow tyre with traction pattern.

T501



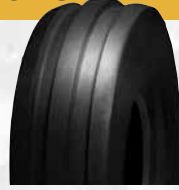
High speed tyre with easy rolling pattern.

T510



Farming tyre with especially easy rolling pattern.

T513



Farming tyre with extra good sidewall stability.

T522



Industry, farming and green area tyre with smooth pattern.

T523



High Speed or industry tyre with high shoulder.

T528



Tyre especially made for snow machines.

T530



Industry tyre with good grip and low roll resistance.

T533



High Speed tyre with combined pattern.

T536



Farming tyre with combined pattern.

T537



Combined tyre for green area, farming and industry.

T539



Combined tyre for green area, farming, industry or high speed service.

T550



Skid Steer tyre with good grip and comfort.

T690



High Speed tyre with high shoulder.

T991



Industry and farming tyre with rounded shoulder.

HIGH GRIP



Tyre for green areas with good grip.

TRACTION



Farming tyre with good grip.

Tyres for Light Service

Technical specifications

TYRES 3"

SIZE	PR/LI	TREAD PATTERN	MAIN RANGE OF USE	RIM SIZE	PERMITTED RIMS	DIAMETER mm +/-1,5%	WIDTH mm +/-2%	MAX. AIR PRESSURE bar	MAX. LOAD kg	SPEED (km/h)	RC mm +/-2,5%
2.50-3	4	T510	Industrial	1.50-3		216	74	8,0	125	25	642
	4	T510 Grey	Industrial	1.50-3		216	74	8,0	125	25	642

TYRES 4"

SIZE	PR/LI	TREAD PATTERN	MAIN RANGE OF USE	RIM SIZE	PERMITTED RIMS	DIAMETER mm +/-1,5%	WIDTH mm +/-2%	MAX. AIR PRESSURE bar	MAX. LOAD kg	SPEED (km/h)	RC mm +/-2,5%
3.00-4	2	T991 Grey	Industrial	2.10-4		260	84	3,4	130	25	772
	4	T991	Farming	2.10-4		260	88	3,5	105	30	772
	6	T991	Farming	2.10-4		260	88	5,0	135	30	772
	6	T530	Industrial	2.10-4		254	84	6,0	200	25	760
4.00-4	4	T991	Farming	2.50C-4	3.00D-4	314	111	2,8	155	30	933
	6	T991	Farming	2.50C-4	3.00D-4	312	113	4,25	190	30	927
4.10-4	4	T510	Farming	2.10-4		276	104	2,8	165	30	820
4.10/3.50-4	6	T539	Industrial	2.10-4		272	89	6,9	210	25	808
11x4.00-4	2	T537 TL	Green Area	2.75A-4	3.25A-4	262	101	1,55	100	25	778
100/100-4	60A8	T539	Industrial	2.50-4		304	98	6,0	250	40	903

TYRES 6"

SIZE	PR/LI	TREAD PATTERN	MAIN RANGE OF USE	RIM SIZE	PERMITTED RIMS	DIAMETER mm +/-1,5%	WIDTH mm +/-2%	MAX. AIR PRESSURE bar	MAX. LOAD kg	SPEED (km/h)	RC mm +/-2,5%
3.50-6	4	T510	Farming	2.50A-6	2.50C-6	341	100	3,0	165	30	1013
	4	T513	Farming	2.50A-6	2.50C-6	338	98	3,0	165	30	1004
4.10/3.50-6	57J	T533 HS	High Speed	2.50A-6		320	94	4,5	230	100	950
4.00-6	4	T510	Farming	2.50A-6		363	110	2,8	190	30	1078
	6	T991	Farming	2.50A-6		358	108	4,3	250	30	1063
13x5.00-6	4	T539 TL	Green Area	3.50A-6		322	117	2,0	280	25	956
	4	T510 TL	Farming	3.50A-6		326	119	2,0	280	25	968
	2	T537 TL	Green Area	3.50A-6		320	112	1,0	140	25	950
120/70-6	41A8	T463 TL Plus	Green Area	3.50A-6		320	114	2,0	145	40	950
140-6	6	T539	Farming	4.50A-6		328	137	4,3	260	30	974
	6	T510	Industrial	4.50A-6		325	134	7,0	650	25	965
	10	T510 Truck	Industrial	4.50A-6		338	143	9,5	780	25	1004
15x6.00-6	4	T510 TL	Green Area/Farming	4.50A-6		368	160	2,0	225	30	1093
	6	T510	Farming	4.50A-6		366	162	3,8	335	30	1087
	4	T539 TL GRIP	Green Area/Farming	4.50A-6		370	161	2,0	225	30	1099
100/65-6	24A8	T539 TL	Green Area	3.00A-6		286	96	1,6	90	40	849
220/50-6	73A8	T510	Farming	7.00A-6		370	222	2,8	365	40	1099

TYRES 8 "

SIZE	PR/LI	TREAD PATTERN	MAIN RANGE OF USE	RIM SIZE	PERMITTED RIMS	DIAMETER mm +/-1,5%	WIDTH mm +/-2%	MAX. AIR PRESSURE bar	MAX. LOAD kg	SPEED (km/h)	RC mm +/-2,5%
3.00-8	2	T539 Grey	Industrial	2.50A-8	2.10-8	358	86	2,4	140	25	1063
3.50-8	4	T510	Farming	2.50A-8	2.10-8	392	101	2,8	190	30	1164
	4	T513	Farming	2.50A-8	2.10-8	399	98	2,8	190	30	1185
4.00-8	56J	T501 HS	High Speed	2.50A-8		393	101	4,3	224	100	1167
	4	T63	Farming	2.50A-8	3.00D-8, 2.50C-8	430	113	2,8	225	30	1277
	4	T510	Farming	2.50A-8	3.00D-8, 2.50C-8	416	112	2,8	225	30	1236
	4	T991	Farming	2.50A-8	3.00D-8, 2.50C-8	416	113	2,8	225	30	1236
	6	T991	Farming	2.50A-8	3.00D-8, 2.50C-8	415	110	4,3	290	30	1233
	6	T522	Farming	2.50A-8	3.00D-8, 2.50C-8	426	112	4,3	290	30	1265
	71J	T49 HS	High Speed	2.50A-8		418	116	6,3	345	100	1241
	8	T523	Industrial	3.00D-8	2.50A-8	418	123	9,0	670	25	1241
	4	T513	Farming	2.50A-8	3.00D-8, 2.50C-8	428	110	2,8	225	30	1271
	6	T991	Farming	3.00D-8		466	142	3,6	380	30	1384
5.00-8	10	T991	Farming	3.00D-8		464	143	6,0	515	30	1378
	78J	T523	High Speed	3.00D-8		460	145	5,3	425	100	1366
	6	T522	Farming	3.00D-8		450	138	3,6	380	30	1337
165/60-8	46A8	High Grip TL	Green Area	5.375I-8		406	166	1,4	170	40	1206
195/65-8	58A8	High Grip TL	Green Area	5.375I-8		454	204	1,2	236	40	1348
16.5x6.50-8	64J	T539 HS TL	High Speed	5.375I-8		412	173	3,1	280	100	1224
	73J	T539 HS TL	High Speed	5.375I-8		408	172	4,8	365	100	1212
16x6.50-8	4	T539 TL	Green Area	5.375I-8	5.50A-8	406	166	2,0	240	30	1206
	6	T539	Farming	5.375I-8	5.50A-8	410	172	3,0	345	30	1218
	6	T510	Farming	5.375I-8	5.50A-8	406	170	3,0	345	30	1206
16x7.50-8	4	T537 TL	Green Area/Farming	5.375I-8		426	178	2,1	335	25	1265
190-8	8	T537	Industrial	5.50A-8		426	184	5,9	575	25	1265
18x7.50-8	2	T539 TL	Green Area/Farming	5.375I-8		462	192	0,9	170	30	1372
18x8.50-8	6	T510	Farming	7.00I-8		466	222	2,8	465	30	1384
	4	T539 TL	Green Area/Farming	7.00I-8		472	222	1,9	405	30	1402
	6	T539	Farming	7.00I-8		466	222	2,8	465	30	1384
220/60-8	74A8	T463 TL Plus	Green Area	7.00I-8		474	220	2,0	375	40	1408
20x10.00-8	4	T539 TL	Green Area	8.00I-8	7.00I-8	532	260	1,6	500	25	1580
	6	T539	Farming	8.00I-8	7.00I-8	524	262	2,4	635	30	1556

TYRES 9 "

SIZE	PR/LI	TREAD PATTERN	MAIN RANGE OF USE	RIM SIZE	PERMITTED RIMS	DIAMETER mm +/-1,5%	WIDTH mm +/-2%	MAX. AIR PRESSURE bar	MAX. LOAD kg	SPEED (km/h)	RC mm +/-2,5%
6.00-9	99J	T523 HS	High Speed	4.00E-09		562	170	8,5	775	100	1669
6.00-9	6	T991	Farming	4.00E-09		545	161	3,0	500	30	1619
	10	T991	Farming	4.00E-09		542	182	5,0	670	30	1610
	10	T522	Farming	4.00E-09		564	164	5,0	670	30	1675

TYRES 10 "

SIZE	PR/LI	TREAD PATTERN	MAIN RANGE OF USE	RIM SIZE	PERMITTED RIMS	DIAMETER mm +/-1,5%	WIDTH mm +/-2%	MAX. AIR PRESSURE bar	MAX. LOAD kg	SPEED (km/h)	RC mm +/-2,5%
5.0-10	4	T462 TL	Farming	4.00-10		528	135	1,2	270	30	1568
4.40-10	62J	T690	High Speed	3.50-10		476	118	3,5	265	100	1414
7.50-10	12	T991	Farming	5.50F-10	6.00F-10	670	224	5,0	1075	30	1990
	14	T523 TL	Industrial	5.50F-10		668	225	9,0	2180	25	1984
9.00-10	14	T991 TL	Industrial	6.00F-10		742	260	8,3	2660	25	2204
20x8.00-10	4	T539 TL	Green Area	6.00I-10		512	204	1,9	365	25	1521
	6	T539 TL	Farming	6.00I-10		505	204	2,9	585	30	1500
20x10.00-10	6	T539 TL	Farming	7.00I-10	8.00I-10	516	260	2,4	615	30	1533
21x8.00-10	4	T462 TL	Farming	6.00I-10		542	206	1,9	495	30	1610
250/50-10	79A8	High Grip TL	Green Area	8.00I-10	7.00I-10, 8.50I-10	510	256	1,8	437	40	1515

TYRES 12 "

SIZE	PR/LI	TREAD PATTERN	MAIN RANGE OF USE	RIM SIZE	PERMITTED RIMS	DIAMETER mm +/-1,5%	WIDTH mm +/-2%	MAX. AIR PRESSURE bar	MAX. LOAD kg	SPEED (km/h)	RC mm +/-2,5%
4.00-12	4	T63 TL	Farming	3.00D-12	2.50C-12, 3.00B-12	532	113	2,2	210	30	1580
6-12	4	T63 TL	Farming	4.00E-12		582	146	2,0	230	30	1729
23x8.50-12	4	T463 TL	Farming	7.00I-12	7JA-12	572	208	1,8	540	30	1699
	10	T463 TL	Farming	7.00I-12	7JA-12	572	210	3,7	1045	30	1699
	6	T550 TL	Skid Steer	7.00I-12		589	211	3,4	820	10	-
23x8.50-12	10	T539	Farming	7.00I-12	7JA-12	568	212	3,7	1045	30	1687
220/60-12 (23x8.50-12)	88A8	T539 Soft Grip TL	Green Area	7.00I-12	7JA-12	578	224	2,0	560	40	1736
23x10.50-12	4	T463 TL	Farming	7.00I-12	8.50I-12	574	272	1,4	550	30	1705
	10	T463 TL	Farming	7.00I-12	8.50I-12	574	272	3,6	1000	30	1705
	4	T539 TL	Green Area/Farming	7.00I-12	8.50I-12	580	269	1,4	550	30	1723
	6	T539 TL	Farming	7.00I-12	8.50I-12	572	272	2,2	770	30	1699
260/55-12	104A8	T412 TL	Green Area/Farming	7.00I-12	8.50I-12	584	236	2,4	900	40	1734
23x12.50-12	6	T539 TL	Green Area	10.50-12		584	317	2,9	1200	25	1734
10.0/75-12	10	T446	Farming	7.00I-12	9.00-12	690	255	3,9	1325	30	2049
300/65-12	118	T446 TL	Farming	9.00-12		687	303	2,4	1320	40	2040
320/60-12	132A8	T421	Farming	10.50I-12		689	320	4,0	2000	40	2049
26x12.00-12	4	T539 TL	Green Area	10.50I-12		652	320	1,4	730	30	1936
	8	T539 TL	Farming	10.50I-12		652	320	2,7	1150	30	1936
	4	T411 TL	Green Area/Farming	10.50I-12		646	318	1,4	730	30	1919
	4	T463 TL	Farming	10.50I-12		654	318	1,4	730	30	1942
	8	T463 TL	Farming	10.50I-12		654	318	2,7	1150	30	1942
	4	T439 TL	Farming	10.50I-12		650	318	1,4	730	30	1931
320/55-12	105A8	T412 TL	Green Area/Farming	10.50I-12		655	316	1,6	925	40	1945
560x140-12	100A4	T528	Snow Groomer	3.00B-12		556	144	8,0	800	20	-

TYRES 13 "

SIZE	PR/LI	TREAD PATTERN	MAIN RANGE OF USE	RIM SIZE	PERMITTED RIMS	DIAMETER mm +/-1,5%	WIDTH mm +/-2%	MAX. AIR PRESSURE bar	MAX. LOAD kg	SPEED (km/h)	RC mm +/-2,5%
23x5(5.00-13)	10	T94	Industrial	4.50-13	3.75-13	653	173	8,5	1500	25	1913
610x145-13	112A4	T528	Snow Groomer	4JA-13		645	160	7,5	1120	20	-

TYRES 14 "

SIZE	PR/LI	TREAD PATTERN	MAIN RANGE OF USE	RIM SIZE	PERMITTED RIMS	DIAMETER mm +/-1,5%	WIDTH mm +/-2%	MAX. AIR PRESSURE bar	MAX. LOAD kg	SPEED (km/h)	RC mm +/-2,5%
645x160-14	120A4	T528	Snow Groomer	4JA-14		645	160	8,0	1400	20	-

TYRES 14,5 "

SIZE	PR/LI	TREAD PATTERN	MAIN RANGE OF USE	RIM SIZE	PERMITTED RIMS	DIAMETER mm +/-1,5%	WIDTH mm +/-2%	MAX. AIR PRESSURE bar	MAX. LOAD kg	SPEED (km/h)	RC mm +/-2,5%
200/60-14.5	10	T448 Extra	Farming	6.75-14.5		620	206	5,0	950	30	1841
	10	T536	Farming	6.75-14.5		628	204	5,0	950	30	1865

TYRES 15 "

SIZE	PR/LI	TREAD PATTERN	MAIN RANGE OF USE	RIM SIZE	PERMITTED RIMS	DIAMETER mm +/-1,5%	WIDTH mm +/-2%	MAX. AIR PRESSURE bar	MAX. LOAD kg	SPEED (km/h)	RC mm +/-2,5%
165-15	4	T510 TL	Farming	4.00/4.50E-15		637	166	2,4	465	30	1892
690x180-15	100A8	Traction	Farming	4.50E-15		685	179	3,3	800	40	2034
29x12.50-15	4	T411	Green Area/Farming	10LB-15		743	308	1,3	935	30	2207
29x13.50-15	4	T411	Green Area/Farming	10LB-15		731	334	1,2	970	30	2171
33x12.50-15	6	T413 TL	Green Area/Farming	10LB-15		846	320	1,9	1430	30	2513
31x15.50-15	8	T412 TL	Farming	13LB-15		818	402	3,1	1427	30	2429
33x15.50-15	6	T412 TL	Green Area/Farming	13LB-15		842	395	1,5	1555	30	2501
	8	T412 TL	Farming	13LB-15		842	395	2,0	1840	30	2501

Max load and pressure in the table above are for freerolling service LLV at speed 10, 20, 25, 30, 40 and 100 km/h.
 TL = Tubeless.
 LI = Load index.

LLV = Low Load Variation, e.g. implements (ploughs, cultivator, etc.) and trailers with minor variations in load. For LLV in Driving service decrease the load with 30%.
 HLV = High Load Variation e.g. trailers, e.g. trailers with significant variations in load. For HLV the maximum load can be increased by 20% if the inflation pressure increases with 30%.
 RC = Rolling circumference = Calculated values.

Load Index

The Load Index (LI) is an international code, indicating the maximum load for a tyre independent of its type or size.

LI	KG	LI	KG	LI	KG
1	46	51	195	101	825
2	47	52	200	102	850
3	49	53	206	103	875
4	50	54	212	104	900
5	51	55	218	105	925
6	53	56	224	106	950
7	54	57	230	107	975
8	56	58	236	108	1000
9	58	59	243	109	1030
10	60	60	250	110	1060
11	61	61	257	111	1090
12	63	62	265	112	1120
13	65	63	272	113	1150
14	67	64	280	114	1180
15	69	65	290	115	1215
16	71	66	300	116	1250
17	73	67	307	117	1285
18	75	68	315	118	1320
19	77	69	325	119	1360
20	80	70	335	120	1400
21	82	71	345	121	1450
22	85	72	355	122	1500
23	87	73	365	123	1550
24	90	74	375	124	1600
25	92	75	387	125	1650
26	95	76	400	126	1700
27	97	77	412	127	1750
28	100	78	425	128	1800
29	103	79	437	129	1850
30	106	80	450	130	1900
31	109	81	462	131	1950
32	112	82	475	132	2000
33	115	83	487	133	2060
34	118	84	500	134	2120
35	121	85	515	135	2180
36	125	86	530	136	2240
37	128	87	545	137	2300
38	132	88	560	138	2360
39	136	89	580	139	2430
40	140	90	600	140	2500
41	145	91	615	141	2575
42	150	92	630	142	2650
43	155	93	650	143	2725
44	160	94	670	144	2800
45	165	95	690	145	2900
46	170	96	710	146	3000
47	175	97	730	147	3075
48	180	98	750	148	3150
49	185	99	775	149	3250
50	190	100	800	150	3350

Speed Index

The Speed Index (SI) is an international code indicating the maximum speed for which a tyre is designed.

SI	Speed	SI	Speed	SI	Speed
A2	10 km	A7	35 km	E	70 km
A3	15 km	A8	40 km	F	80 km
A4	20 km	B	50 km	G	90 km
A5	25 km	C	60 km	J	100 km
A6	30 km	D	65 km	K	110 km

Trelleborg. Wheels and Rims for Light Service Tyres

The Trelleborg range of wheels and rims, is available from 3" to 16" in size and can be supplied in many different configurations depending on application, requirements for load capacity and several other values influencing the design.

The wheels and rims are designed with different specifications – ie. sizes, integral hubs, bearings, bores, offsets, plate thickness, paint finish etc. that match the performance requirements defined.

Rims and Wheels available

The table contains the product range available in term of dimensions, widths and configurations. The columns welded/divided indicate whether the specific size of rim/wheel is available as welded version and/or as assembled version. While the columns hub/bore indicate if the size (dimension/width) is available as wheel (hub) and/or rim (bore).

Rim/Wheel width	Dimension	Welded	Divided	Hub	Bore
1.50-3	3 inches		●	●	
2.10x4	4 inches	●		●	
2.10-4	4 inches		●	●	
2.50-4	4 inches		●	●	
2.85x4	4 inches	●		●	
6.35-4	4 inches		●	●	
3.50x5	5 inches	●		●	
2.50x6	6 inches	●		●	
2.50Ax6	6 inches	●			●
3.50x6	6 inches	●		●	
3.50-6	6 inches		●	●	
3.50Ax6	6 inches	●			●
4.00Ax6	6 inches	●		●	●
4.50x6	6 inches	●		●	
4.50-6	6 inches		●	●	
4.50Ax6	6 inches	●			●
4.50A-6	6 inches		●		●
7.00Ax6	6 inches	●		●	
1.40-8	8 inches		●		●
2.125-8	8 inches		●	●	
2.125-8	8 inches		●		●
2.50x8	8 inches	●		●	
2.50A/Cx8	8 inches	●			●
2.50C-8	8 inches		●		●
3.00x8	8 inches	●		●	
3.00-8	8 inches		●	●	
3.00Dx8	8 inches	●		●	
3.00D-8	8 inches		●		●
3.75-8	8 inches		●	●	
3.75I-8	8 inches		●		●
4.25I-8	8 inches		●		●
4.33-8	8 inches		●	●	
4.33R-8	8 inches		●		●
5.00x8	8 inches	●			●
5.375/5.50x8	8 inches	●		●	
5.375I/5.50Ax8	8 inches	●			●
5.50-8	8 inches		●	●	
5.50-8	8 inches		●		●
6.20x8	8 inches	●			●

Rim/Wheel width	Dimension	Welded	Divided	Hub	Bore
6.25x8	8 inches	●		●	
6.25x8	8 inches	●			●
7.00x8	8 inches	●		●	
7.00-8	8 inches		●		●
7.00lx8	8 inches	●			●
7.75lx8	8 inches	●			●
8.50x8	8 inches	●		●	
8.50lx8	8 inches	●			●
4.00x9	9 inches	●		●	
4.00-9	9 inches		●	●	
4.00Ex9	9 inches	●			●
4.00E-9	9 inches		●		●
6.00E-9	9 inches		●		●
3.50x10	10 inches	●		●	
3.50x10	10 inches	●			●
3.50F-10	10 inches		●		●
5.00F-10	10 inches		●		●
5.50-10	10 inches		●	●	
5.50F-10	10 inches		●		●
6.00x10	10 inches	●		●	
6.00lx10	10 inches	●			●
6.00-10	10 inches		●		●
7.00x10	10 inches	●		●	
7.00lx10	10 inches	●			●
8.50x10	10 inches	●		●	
8.50lx10	10 inches	●			●
3.00x12	12 inches	●		●	
3.00Dx12	12 inches	●			●
4.00x12	12 inches	●		●	
4.00x12	12 inches	●			●
4.25x12	12 inches	●		●	
4.25x12	12 inches	●			●
5.00S-12	12 inches		●		●
7.00x12	12 inches	●		●	
7.00x12	12 inches	●			●
9.00x12	12 inches	●		●	
8.50x12	12 inches	●			●
10.50x12	12 inches	●			●
4.50x13	13 inches	●		●	
4.50x13	13 inches	●			●
5.50x14	14 inches	●		●	
5.50Kx14	14 inches	●			●
6.00lx14	14 inches	●			●
6.75x14.5	14.5 inches	●		●	
6.75x14.5	14.5 inches	●			●
3.00x15	15 inches	●		●	
3.00Ex15	15 inches	●			●
4.00x15	15 inches	●		●	
4.00Ex15	15 inches	●			●
4.50x15	15 inches	●		●	
5.50x15	15 inches	●		●	
6.00x15	15 inches	●		●	
7.00x15	15 inches	●		●	
10.00x15	15 inches	●			●
13.00x15	15 inches	●			●
4.00x16	16 inches	●		●	
4.00Ex16	16 inches	●			●
5.50x16	16 inches	●		●	
9.00x16	16 inches	●		●	

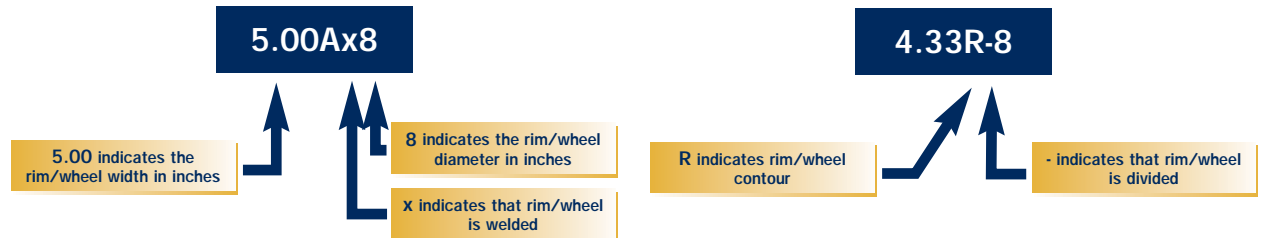
For original equipment manufacturers' only.

Technical information

about rims and wheels

Size

The first figure specified for a rim or wheel indicates its width in inches. The last figure indicates its diameter in inches. The letter after the first figure indicates the contour of the rim or wheel. The symbol after the letter indicates whether it has been assembled or welded.



The difference between a rim and a wheel

Rim

A rim consists of two drop-centred disc or two flat-based disc with a bore, welded or assembled.

The rim is fitted onto a hub and therefore it is vital that the diameter of the pitch circle of the stud holes is the same on the rim as on the hub.

The standard stud holes are pressed with a conical stud seat of 60°, 80° and 90° both for welded and assembled rims.

A wide range of bores are available so that rims can be supplied with a bore to meet your specific demands.



Wheel

A wheel consists of two drop-centred disc welded together or two flat-based disc assembled, and an integral hub.

A wide range of integral hubs is available making it possible also to place the hub in an offset position.



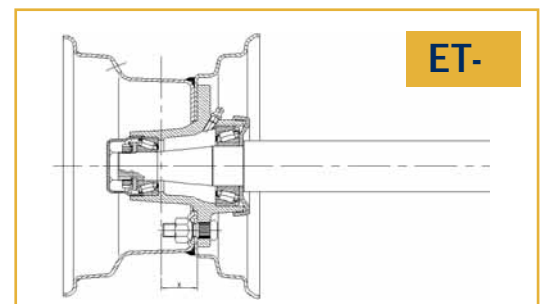
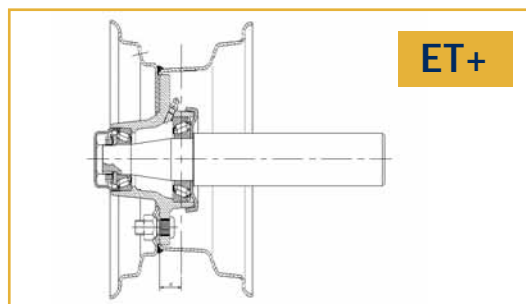
Offset

The offset is measured from the centre of the rim/wheel to the hub side of the inner plate.

The offset can be positive (+) or negative (-).

Two more conditions must be fulfilled before we are able to make an offset. It is necessary that the dimension and the disc contour are the same on both disc.

Therefore wheels can be designed specifically for the functions required by your construction.



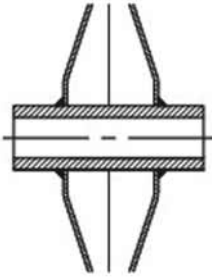
The paint finish

Trelleborg uses a fully automated phosphating and powder painting facility which gives the products a perfect finish and allows the choice of more than fifty different RAL colours. Furthermore, there is the possibility to choose your own colour outside this range when ordering a large number of units.

Integrated hub types

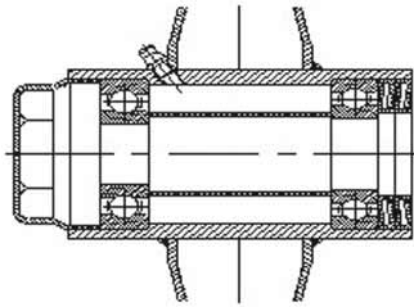
The integrated hubs are designed to match the axle specifications and the required load capacities. The hubs can be designed with a number of different bearings, lubrication nipples, stub axles, seals, caps, axles and other features or have a more plain design.

Examples of integrated hubs types available



Type of hub: **Hub PL**

Bearing: **None/with key-way**



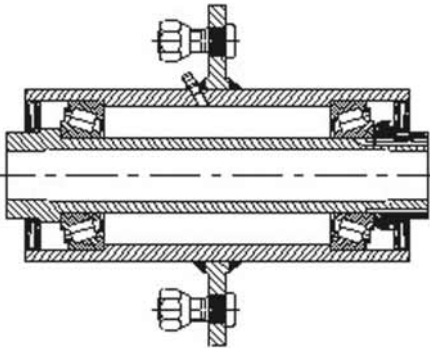
Type of hub: **Hub EK**

Bearing: **Ball bearing**

Hub types and axles

Trelleborg also produces a wide range of hubs and stub axles (up to a length of 600 mm). The hubs are designed with a flange of different size and bores matching the rim specifications. Furthermore the hubs can be designed with a number of different bearings, lubrication nipples, seals, caps, axles and other features.

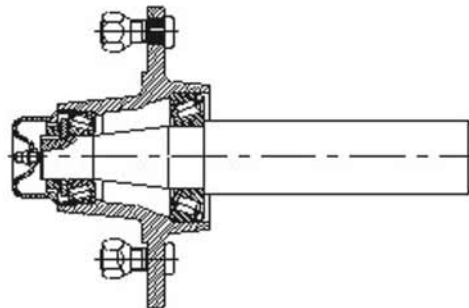
Examples of hubs available



Type of hub: **Hub GC**

Hub for fork mounting.
Possible to get different sizes.

Bearing: **Ball bearings**
or tapered roller bearings



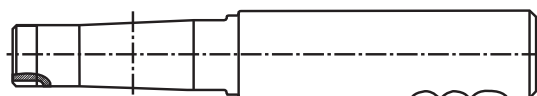
Type of hub: **Cast hub EC**

Possible to get different sizes
with suitable axles.

Bearing: **Ball bearings**
or tapered roller bearings

The axles produced are designed to match the hub of the wheel and the construction on which the axles are mounted.

Example of axles available



Trelleborg is available for information about design of wheels, rims, hubs and axles to match the requirements of your construction.

**NO ONE IS CLOSER
TO THE EARTH**



TRELLEBORG

Trelleborg Wheel Systems S.p.A.

Via Nazionale Tiburtina, 143 - 00010 Villa Adriana (RM) Italy

Phone +39 0774 38481 - Fax +39 0774 384702

www.trelleborg.com/wheelsystems