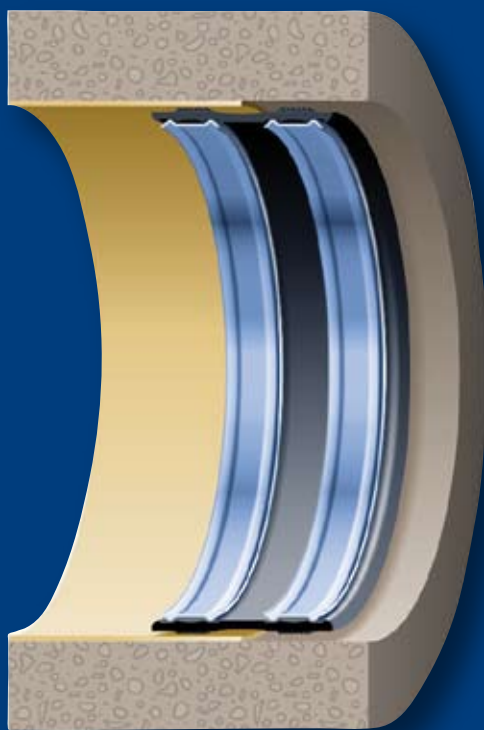


## NPC — Liner End Seal



- *Prevents infiltration between Liner and Host Pipe*
- *Manufactured from EPDM Rubber and Stainless Steel to withstand the harsh sanitary sewer environment.*
- *Complies with material property requirements of ASTM C923*
- *Quick and easy to install*

*Eliminates Infiltration/Exfiltration  
between the Liner and Host Pipe.*



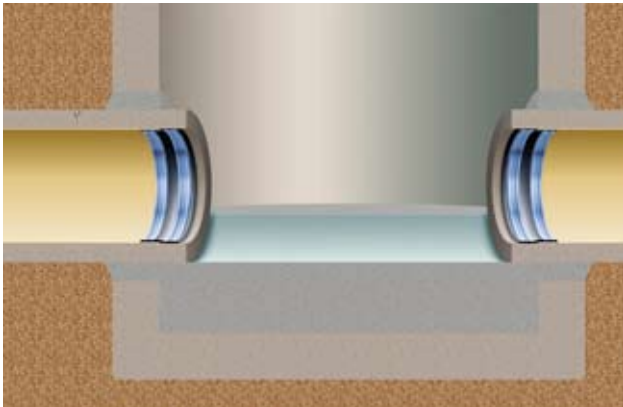
# NPC – Liner End Seal

The NPC Liner End Seal utilizes the patented Slotted Band® to provide maximum sealing force with a minimum reduction in pipe diameter. This unique design captures the rubber and compresses it against the host pipe and new CIPP liner creating a permanent mechanical seal.

The patented Slotted Band is constructed from a single piece of 300 Series Stainless Steel precisely rolled to match the diameter of the CIPP liner. The unique shape of the Slotted Band provides the maximum amount of strength and sealing force with the least possible thickness.



The band is then expanded using a hydraulic expansion tool. As the band expands the integral latching mechanism progresses from slot to slot, positively locking on each one until the next one is reached. There is an audible click created by the spring/rubber interaction as the band is expanded into place.



Covered under U.S. Patent No. 6,953,194 & 7,243,956 B2



Trelleborg Pipe Seals Milford, Inc.  
250 Elm Street, P.O. Box 301, Milford, New Hampshire 03055 U.S.A.  
Tel: 800-626-2180 603-673-8680 Fax: 603-673-7271 [www.trelleborg.com/npc](http://www.trelleborg.com/npc)