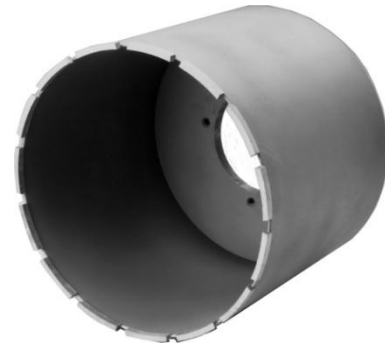


# NPC – Diamond Tipped Core Drills

## Core Drill Couplings



Spindle Adapters		
P/N	From Machine Flange	To Core Drill Flange
11196	A	C
10771	A	1¼-7
10458	A	N-Rod
10832	C	A
10833	C	1¼-7
11166	C	N-Rod
10898	1¼-7	A
10877	1¼-7	C
10896	1¼-7	N-Rod
10899	N-Rod	A
10895	N-Rod	1¼-7

*Example: Use P/N 11196 to convert Machine Flange A to use a Core Drill Flange C.*

Spindle Extensions			
P/N	Core Drill Flange	Additional Length	
		Inches	[mm]
11135	A	1.5	[38]
10860	A	2	[51]
10522	A	3	[76]
10999	A	3.125	[79]
10624	A	6.375	[162]
12400	A	9.375	[238]
11820	A	12	[305]
11884	A	18	[457]
11749	C	4	[102]
11748	C	8	[203]
11099	C	12	[305]
12202	1¼-7	6	[152]
12748	1¼-7	12	[305]

### Standard Core Drill Couplings

A-Flange = 4-bolt, 5" [127mm] Pilot Diameter

C-Flange = 3-bolt, 2" [51mm] Pilot Diameter