

Harbour Marine designs, supplies, and integrates Environmental Monitoring Systems for the marine and offshore industries. The seamless integration of this data into Docking Aid Systems (DAS) and Mooring Line Monitoring (MLMS) Systems is standard at LNG terminals as it is now recognized by industry as an essential tool for the safe operation of marine terminals.

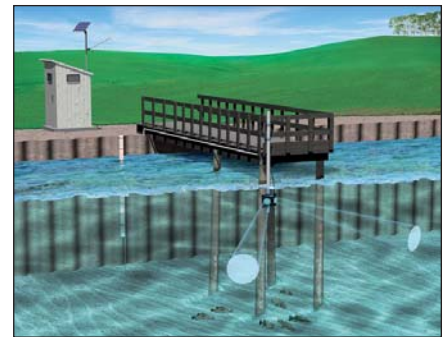
Our systems offer comprehensive measurement and recording of typical MetOcean parameters including:

- Wind speed and direction
- Wave height, period and direction
- Tide level and trend
- Current speed and direction (at fixed depths or full water column)
- Salinity and water temperature
- Barometric pressure, humidity, temperature, rainfall and visibility

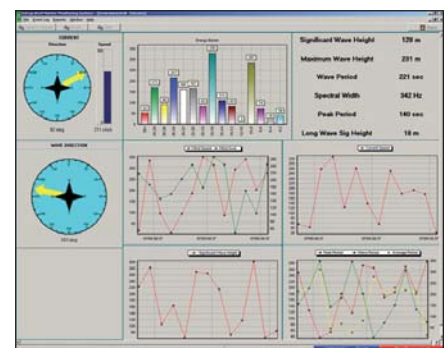
The measurement of these parameters is provided by a wide range of instruments selected from the world's leading manufacturers. Our instrumentation experience in marine oil and gas ensures systems are compliant with Hazardous Zoning Regulations and provide many years of reliable service.

The Integrated System provides concurrent multi-user access to the environmental data. The data is made available to the vessel whether approaching or moored at the berth. Wireless handheld displays provide convenient access to this information for pilots and marine personnel.

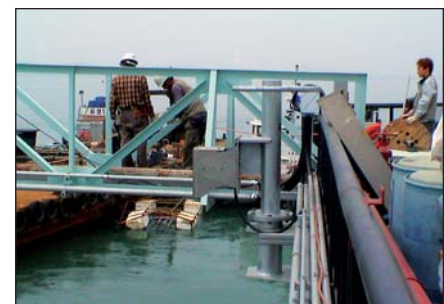
Comprehensive data logging and report generation via the Integrated Vessel Monitoring System manages historic data whilst providing graphing, plotting and report capabilities, making it the most comprehensive docking, mooring and monitoring system available for jetties today.



*Side looking current meter*



*Typical Metocean screen*



*Non-contact wave height laser*