

## ● 2-piece CR mounting



### Features

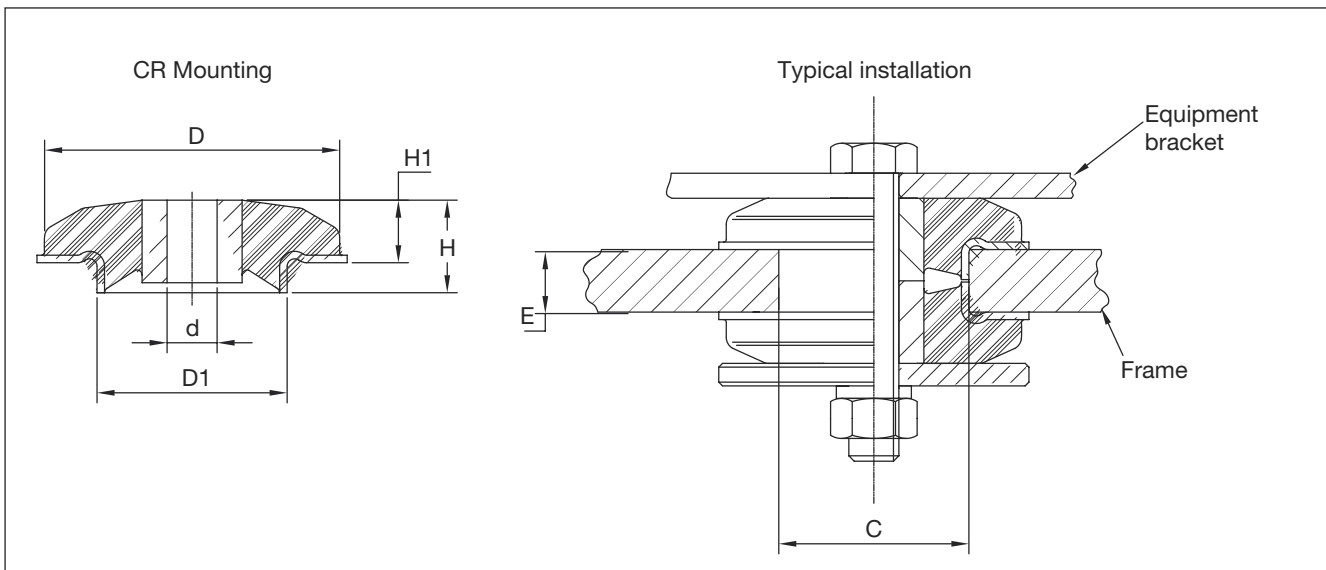
With washer it is a compact fail-safe design easy to fit with a single bolt.

- Integral bonded steel flange prevents rubber wear at interface with bracket.
- No radius or chamfer required for installation hole.
- 2-piece design gives excellent isolation performance and rebound control during shock loading of the vehicle.

### CR-Controlled Rebound mounting

A range of mounting designed for high load capacity and low installation height. The high loading for a given size is achieved by utilizing the rubber to best advantage in shear and compression.

- Off-highway engines and Cabs



| Type       | Part no.    | Dimension (mm) |      |    |      |      |    |        | Bolt Size | Max. Bolt Torque Nm | Max. Load kg | Washer Part no. |
|------------|-------------|----------------|------|----|------|------|----|--------|-----------|---------------------|--------------|-----------------|
|            |             | D              | D1   | d  | H    | H1   | E  | C ±0,2 |           |                     |              |                 |
| 17-2190-45 | 20-01110-01 | 65             | 37,8 | 16 | 23,3 | 15,1 | 12 | 37,9   | M16       | 170                 | 75           | 20-01495-01     |
| 17-2190-60 | 20-01111-01 | 65             | 37,8 | 16 | 23,3 | 15,1 | 12 | 37,9   | M16       | 170                 | 100          | 20-01495-01     |
| 17-2178-45 | 20-02506-01 | 94             | 55,5 | 16 | 28   | 19   | 20 | 56,0   | M16       | 250                 | 115          | 20-01494-01     |
| 17-2178-60 | 10-03729-01 | 94             | 55,5 | 16 | 28   | 19   | 20 | 56,0   | M16       | 250                 | 210          | 20-01494-01     |
| 17-1984-45 | 10-03727-01 | 100            | 60   | 22 | 38   | 25,8 | 25 | 60,5   | M22       | 500                 | 260          | 20-01493-01     |
| 17-1984-60 | 10-03728-01 | 100            | 60   | 22 | 38   | 25,8 | 25 | 60,5   | M22       | 500                 | 400          | 20-01493-01     |
| 17-1931-45 | 10-00622-01 | 118            | 75,5 | 20 | 38,3 | 26,4 | 25 | 76,0   | M20       | 500                 | 225          | 20-01493-01     |
| 17-1931-60 | 10-00623-01 | 118            | 75,5 | 20 | 38,3 | 26,4 | 25 | 76,0   | M20       | 500                 | 430          | 20-01493-01     |
| 11-1029-45 | 10-03722-01 | 115            | 63   | 27 | 45   | 33,5 | 25 | 64,0   | M24       | 700                 | 550          | 20-00534-01     |
| 11-1029-60 | 10-00793-01 | 115            | 63   | 27 | 45   | 33,5 | 25 | 64,0   | M24       | 700                 | 900          | 20-00534-01     |