

● Metalastik® type D series, Super D & DX mountings



Metalastik® type D series

Metalastik® D Series Mountings are suitable for the suspension of heavy equipment or machinery where insulation against low frequency vibration is required with the additional benefit of excellent high frequency acoustic attenuation.

Applications/Features

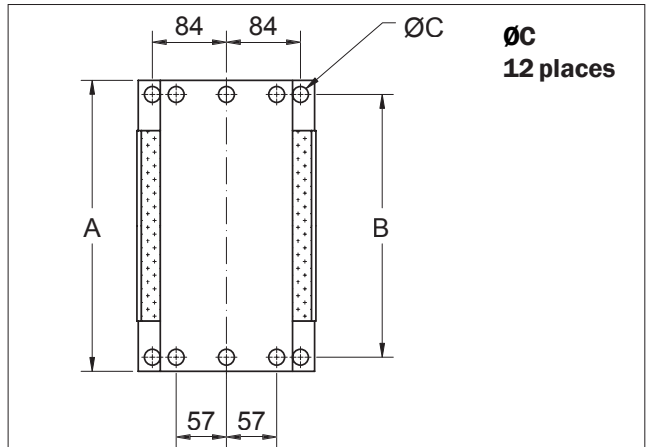
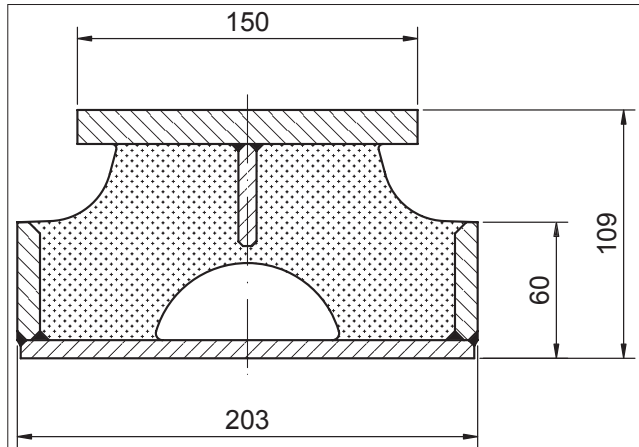
The relatively large rubber volume ensures high degrees of insulation against low frequency disturbing vibrations. Differing stiffness rates in the two horizontal modes enables suspension characteristics to be optimised by appropriate orientation of the mountings.

The mountings can be used in conjunction with additional bonded rubber buffers to limit movement of the suspended equipment under shock loading.

Parts can be supplied to meet naval specification requirements and also with plain flanges for drilling by the customer.

Applications include:

- Medium speed marine propulsion engines
- Generator sets
- Gearboxes
- Pumps
- Compressors and refrigeration systems



Dseries

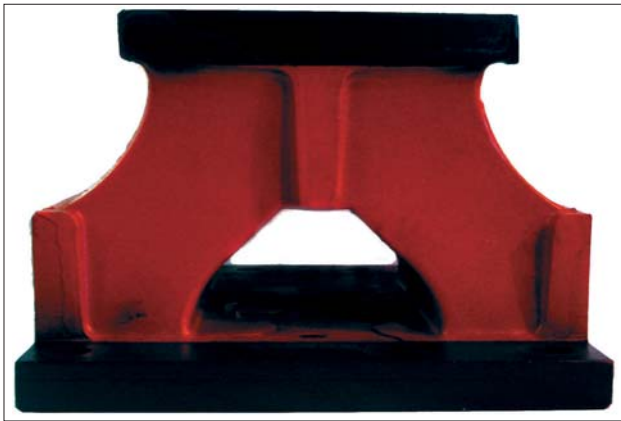
All dimensions in mm

| Product No. | A | B | C | Weight (kg) | Rubber Hardness | Vertical Static Stiffness (N/mm) | Vertical Dynamic Stiffness (N/mm) | Maximum Static Load (kN) |
|-------------|-----|-----|----|-------------|-----------------|----------------------------------|-----------------------------------|--------------------------|
| 17-1601 | 330 | 298 | 18 | 15 | 45 | 880 | 1010 | 14.2 |
| | | | | | 55 | 1315 | 1640 | 21 |
| | | | | | 65 | 1960 | 2650 | 31.4 |
| 17-1602 | 267 | 235 | 14 | 12 | 45 | 805 | 920 | 12.75 |
| | | | | | 55 | 1200 | 1520 | 19 |
| | | | | | 65 | 1710 | 2320 | 27.5 |
| 17-1603 | 210 | 178 | 14 | 9 | 45 | 410 | 470 | 6.6 |
| | | | | | 55 | 610 | 755 | 9.5 |
| | | | | | 65 | 900 | 1215 | 14.2 |

Nominal Stiffness Ratios

| Vertical | Lateral | Longitudinal |
|----------|---------|--------------|
| 1 | 0.95 | 0.17 |

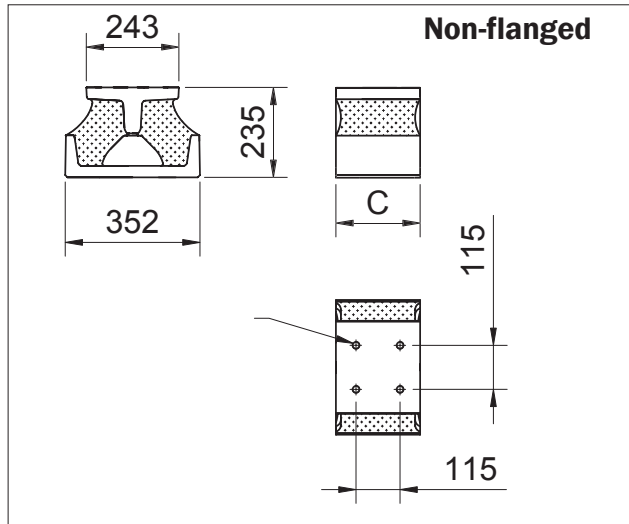
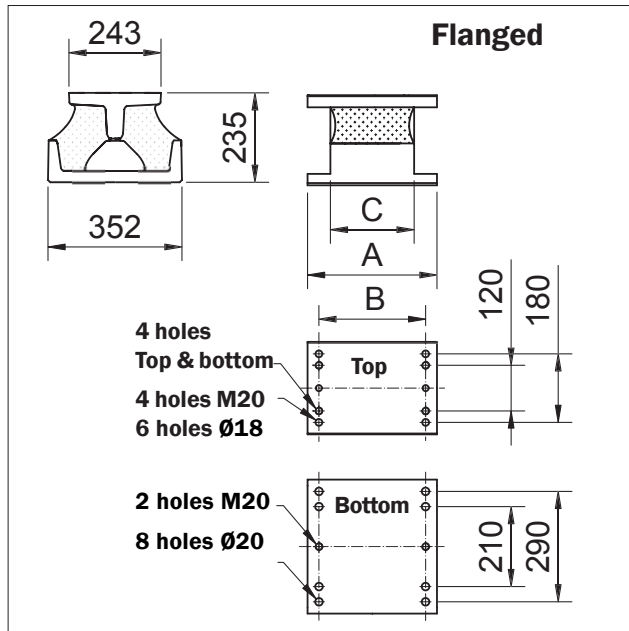
● Metalastik® type D series, Super D & DX mountings



Metalastik® type Super D

The "Super D" mounting range is designed primarily for heavy marine installations requiring increased shock capacity. These mountings operate at a nominal static deflection of 23 mm and can accommodate up to 50 mm shock excursions in any direction. Buffer 15-3671 with low friction contact pad is often used with Super D mounts to limit movement under extreme shock forces, particularly as a non metallic rake and ramming stop, which is shown on the last page.

Please refer to page 4 for further information on buffer arrangements.



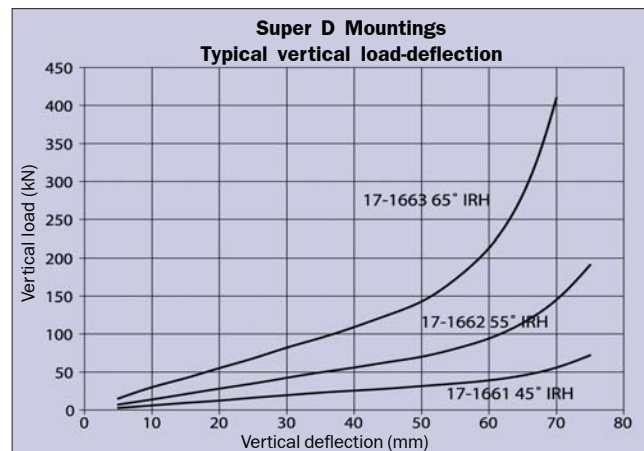
Super D

All dimensions in mm

| Product No. | A | B | C | Mass Weight (kg) | Rubber Hardn. | Vertical Static Stiffness (N/mm) | Vertical Dynamic Stiffness (N/mm) | Max Static Load (kN) |
|-------------------------|-----|-----|-----|------------------|---------------|----------------------------------|-----------------------------------|----------------------|
| Flanged type | | | | | | | | |
| 17-1736 | 340 | 280 | 220 | 65 | 45 | 620 | 710 | 14.2 |
| | | | | | 55 | 920 | 1160 | 21 |
| | | | | | 65 | 1375 | 1965 | 31.5 |
| 17-1737 | 410 | 350 | 290 | 81 | 45 | 835 | 960 | 19 |
| | | | | | 55 | 1275 | 1180 | 29.5 |
| | | | | | 65 | 1960 | 2650 | 44 |
| 17-1738 | 480 | 420 | 360 | 97 | 45 | 1325 | 1520 | 30.5 |
| | | | | | 55 | 1960 | 2450 | 45 |
| | | | | | 65 | 2940 | 3975 | 67.8 |
| Non-flanged type | | | | | | | | |
| 17-1661 | | | 220 | 48.5 | 45 | 620 | 710 | 14.2 |
| | | | | | 55 | 920 | 1160 | 21 |
| | | | | | 65 | 1375 | 1965 | 31.5 |
| 17-1662 | | | 290 | 64 | 45 | 835 | 960 | 19 |
| | | | | | 55 | 1275 | 1180 | 29.5 |
| | | | | | 65 | 1960 | 2650 | 44 |
| 17-1663 | | | 360 | 80 | 45 | 1325 | 1520 | 30.5 |
| | | | | | 55 | 1960 | 2450 | 45 |
| | | | | | 65 | 2940 | 3975 | 67.8 |

Nominal Stiffness Ratios

| Vertical | Lateral | Longitudinal |
|----------|---------|--------------|
| 1 | 1 | 0.22 |

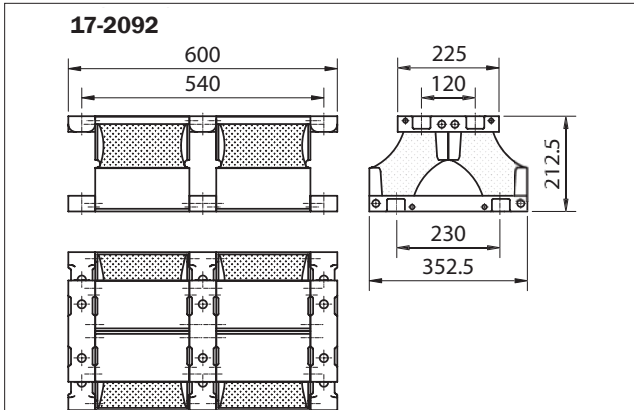


● Metalastik® type D series, Super D & DX mountings

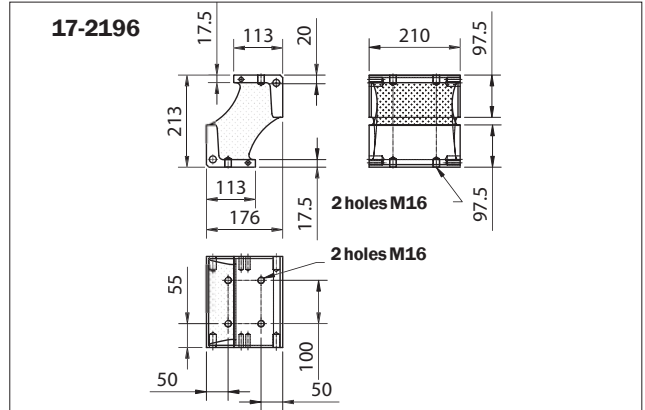


Metalastik® type DX mountings

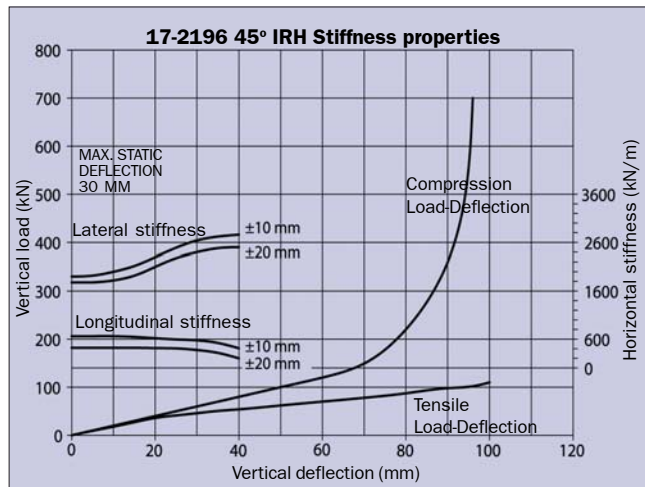
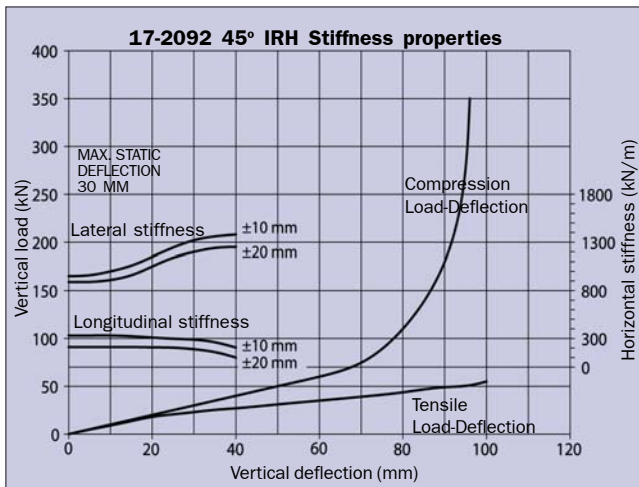
”DX” mountings complement the other two mounting types in the range and provide an extended shock deflection capability of up to 100 mm in the vertical direction. This allows non-ruggedised equipment to be used in military marine applications. The DX mounting can be used as a single element in confined spaces.



The loading and stiffness properties shown in the graphs refer to a mounting assembly comprised of four bonded rubber/metal elements.



Each element is generally similar to product no. 17-2196 which may be used in pairs to provide substantially the same vertical and horizontal stiffness rates. This is similar to two sandwich mountings inclined at 45 degrees but with flat fixing surfaces resulting in simplified and compact installation.



● Metalastik® type D series, Super D & DX mountings

Metalastik® type Buffers

In addition to the mountings, buffers are used to limit movement under seaway conditions and shock loading. Shown below are examples of buffers and typical arrangement details.

Acceleration/Deceleration buffers

| Product No. | A | B | C | D |
|-------------|-----|----|----|----|
| 15-3420 | 98 | 45 | 32 | 19 |
| 15-3421 | 86 | 41 | 26 | 16 |
| 15-3422 | 111 | 51 | 38 | 25 |
| 15-3550 | 150 | 50 | 44 | 25 |
| 15-3551 | 120 | 50 | 37 | 25 |

