

Tactile Flooring

Warning signs for wayfinding



Tactile Flooring

Warning signs for wayfinding

Trelleborg Group has more than 23,000 employees in more than forty countries and more than 100 years experience in the production of rubber products. We undertake large R&D investments. Our salesmen, chemists and engineers work to find out the best solutions for our customers, developing continually new materials, composites, designs and production methods.

The needs of society well into the XXI century have incorporated the universal accessibility concept as a social right that is being deeply rooted.

The accessibility challenge needs leading edge solutions, thus, Trelleborg offers its tactile flooring: a rubber band with embossed signage, easy to detect and translate by the visually Impaired.

Tactile flooring is a perfect solution for the free movement of the blind or visually impaired in public spaces, it guarantees their self-sufficiency and independence. It is easily identified thanks to its high tactile and visual contrast.

Easy and quick to install, the flooring is available in different designs, colours and dimensions in order for it to be adapted to your requirements and applications: stairs, ramps, platforms, entrances, lifts....

It is a wear resistant material easy to maintain and clean, designed to withstand intensive pedestrian traffic. The regular surface increases safety preventing slipping even in moist conditions.

Furthermore, it provides high safety for special applications: underground stations, railway stations, boats, shopping centres, factories and other highly frequented places.



Main properties

High sound contrast to the existing surface

Visual contrast to surrounding surfaces

Approved by external slip test

Accessible for wheelchairs

No fire propagation (Bfl-s1)

Self-extinguishing (M2)

Low smoke emission (F1)

Low smoke opacity (S1)

Non toxic

Ecological

Long lasting

Quick and simple installation

Five year guarantee

Easy cleaning

Excellent resistance to dirt

We offer the most advanced tactile guidance systems

Two conditions bring us within the dynamic realm of tactile guidance solutions to achieve universal accessibility: having at our disposal an innovative leading edge material specifically formulated for this application and a team of technical designers with broad experience in this field.

In order to define the most adequate designs, we study current regulations in force in each country and seek advice from local experts in the matter. Prior to first installation, our product is subject to most stringent tests to ensure it complies or exceeds local requirements.

In this way, our tactile flooring counts on the recommendation of “Fundación ONCE” in Spain or the approval of the RNIB (Royal National Institute for the Blind) in Great Britain and has been installed in environments such as Madrid, Barcelona or London undergrounds, which are taken as some of the main references for the standardisation of universal accessibility.

Also, we count on excellent professional teams with broad experience in the installation of this type of flooring to give support in installation work or training or advice in this respect.

Our company counts on the guarantee of the certifications ISO 9001:2008 and ISO 14001:2004.

Maximum safety:

M2F1 Classification for fire and smoke

Our R&D and Innovation Department has developed a new leading edge rubber formulation that satisfies the most demanding European Directives regarding the fire resistance of materials installed in public places.

The range of fire resistant materials offered by Trelleborg comply with UNE 23727-90 and NF F-16101 standards, apart from other European Regulations on this subject such as EN 13501-1.

Our tactile flooring has been certified by external laboratories such as M2F1 and Bfl-S1, it meaning that:

- ◆ It is halogen free.
- ◆ It is self-extinguishing (M2, according to French standard and Bfl-S1, according to European standard).
- ◆ It has low smoke emission and toxicity (F1).
- ◆ In case of combustion, it emits smoke of low opacity (S1).

Installation

It is simple and quick to install and no civil work is required.

It adheres and seals against the existing paving, thus avoiding the nuisance associated to the removal and replacement of materials, sharply reducing installation time and cost.

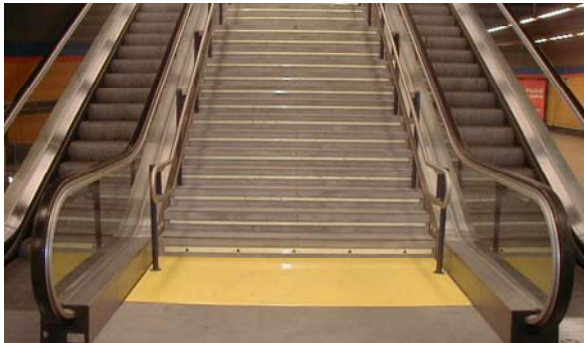
Strip lengths of up to 2,500 mm contribute to these time and cost savings, which speeds up the time of installation and simplifies the labour intensive task of alignment.

Walking on the tactile flooring is possible a few hours after installation. This allows opening the space to the public after completion of the work carried out in night hours when the facilities are closed, without affecting the users.

References and Installations (*)



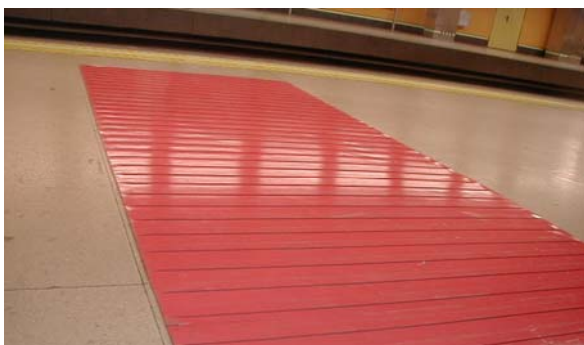
Barcelona underground



Madrid underground



Alingsås railway station (Sweden)



Madrid underground

In Spain:

- ◆ Madrid underground:
A total of about 15,000 linear metres of platform edge, 2,500 m² safety area and 2,900 m² boarding area have been installed.
- ◆ Line offices (Madrid):
Tetuán, Ciudad Lineal and Vallecas
- ◆ Valencia underground
- ◆ Palma de Mallorca underground:
nine stations
- ◆ Intermodal station (Palma de Mallorca)
- ◆ Malvarrosa beach (Valencia)
- ◆ HSR station (Albacete)
- ◆ Short range railway system Adif (Railway Infrastructure Management) stations (Elche)
- ◆ Local Inland Revenue office (Gran Vía street) Comunidad de Madrid
- ◆ Short range railway system Adif station (Castellón)
- ◆ Torre Baró station (Barcelona undergr.)
- ◆ Atocha station (Madrid)
- ◆ Bus station (Toledo)
- ◆ Short range railway system Adif stations (Figueres)

In other countries:

- ◆ Line 3, Caracas underground (Venezuela)
- ◆ London underground (UK)
- ◆ Alingsås Railway station (Sweden)
- ◆ Provisional installations in exhibition centres (France)

() Selection of works carried out between 2004 and 2010.*

Trelleborg Izarra, S.A.

C/ San Vicente, 23

E 01440 Izarra (Alava) - Spain

Tel: +34 945 437 000

Fax: +34 945 437 007

www.trelleborg.com/elastomerlaminates

Trelleborg Industri AB

Henry Dunkers gate 2

SE 231 81 Trelleborg - Sweden

Tel: +46 (0) 410 510 00

Fax: +46 (0) 410 456 34

www.trelleborg.com/elastomerlaminates

Trelleborg Industrie S.A.

Z.I. La Combaude

FR 63050 Clermont-Ferrand Cedex 2

France

Tel: +33 (0) 473 258 100

Fax: +33 (0) 473 258 217

www.trelleborg.com/elastomerlaminates

Trelleborg Industrie GmbH

Kleberst. 2

DE 408 22 Mettmann - Germany

Tel: +49 (0) 2104 2170

Fax: +49 (0) 2104 21 72 96

www.trelleborg.com/elastomerlaminates

