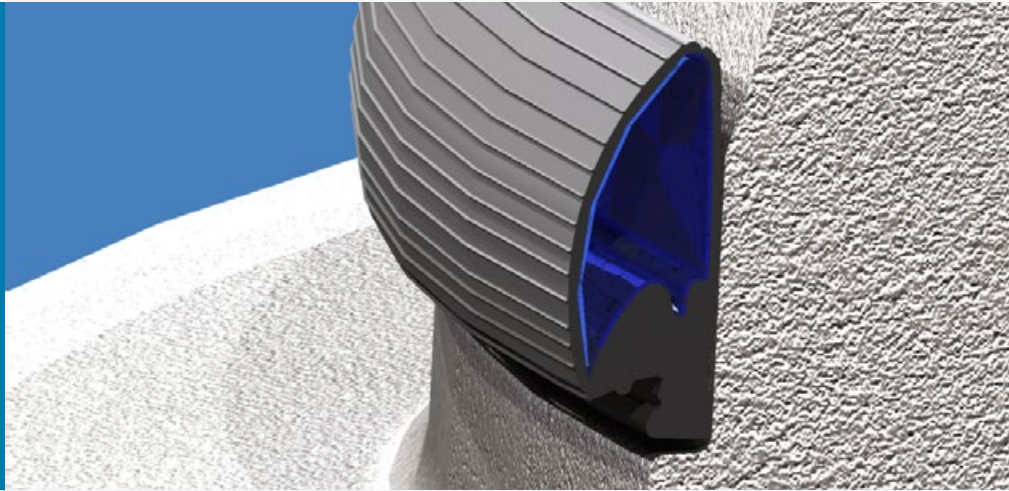


Trelleborg 170 Pre-Lube Manhole Seal

Pre-lubricated seal
for concrete manholes



KEY FEATURES & BENEFITS

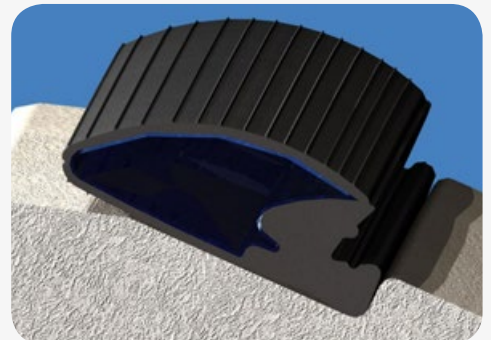
- **Hinged closure for resisting seal displacement**
- **Reduced assembly force**
- **Specially formulated internal lubrication**

SEAL DESIGN & FUNCTION

The Trelleborg 170 is the next generation of pre-lubricated seals for concrete manholes.

Its unique design and specially formulated internal lubrication ensure that manhole sections are easily centered when joining. No external lubrication is required and jointing force is low.

The Trelleborg 170 is made from high quality EPDM rubber and manufactured to the highest standards of the industry. The unique design and installation-friendly features translate to reduced installation time and hence savings on labor.



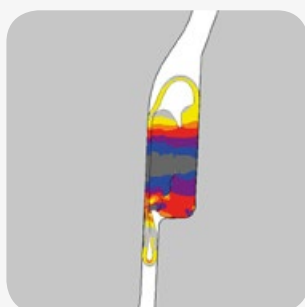
JOINT ASSEMBLY



Stretch the seal onto the spigot and position against the shoulder.



Equalize the stress in the seal by lifting and releasing at a few points. The seal must sit evenly against the spigot shoulder all around the manhole.



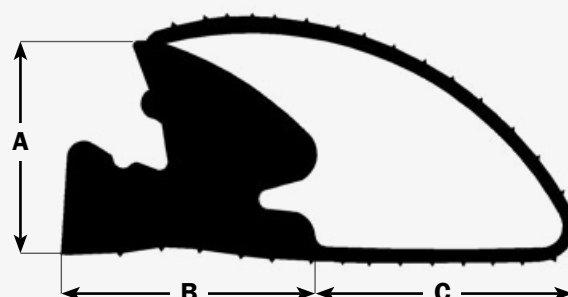
Lubrication of the socket or spigot is not required. Centre the joint and assemble. The position of the seal in the final manhole joint is shown.

If re-joining is required ensure the sliding skin is drawn back to position as shown in the first picture.

SIZE CHART

A (mm in)	B (mm in)	C (mm in)	JOINT GAP (mm in)
14.3 0,56	17.8 0,70	24.9 0,98	8.9±1.2 .35±.05
17.3 0,68	20.7 0,81	21.0 0,83	10.7±1.4 .42±.06
18.2 0,72	21.5 0,85	20.0 0,79	11.3±1.5 .44±.06
19.2 0,76	23.0 0,91	23.2 0,91	11.8±1.6 .46±.06
22.1 0,87	26.3 1,04	26.5 1,04	13.5±1.9 .53±.07

Where even lower assembly force is required please contact Trelleborg Pipe Seals for advice.



MATERIAL

- EPDM rubber
- Hardness 40 ± 5 IRHD
- Protected against ozone
- Specially formulated silicone grease

STANDARDS

- ASTM C1619 & C443
- EN 681-1

Authorities we cooperate with:



TRELLEBORG

WWW.TRELLEBORG.COM/PIPE-SEALS