

# vulcan® Image 4U

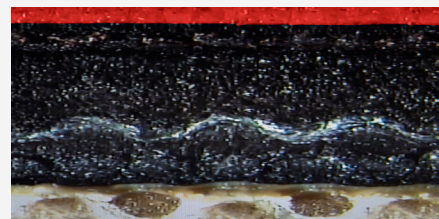
## Key performance

- Incorporates both mechanical strength and carcass stability combined with an innovative top rubber compound
- Very stable carcass
- Excellent half tone reproduction
- Reduced gauge loss

## MAIN APPLICATION

Sheetfed Commercial  
& Packaging

**Vulcan Image 4U is available in  
4 ply, 1,95 mm thickness**



**Vulcan Image 4U**



## The product at a glance

<b>INK COMPATIBILITY</b>	Hybrid
<b>PRINTING SURFACE COLOUR</b>	Red
<b>THICKNESS (mm)</b>	1,95
<b>AVERAGE LOAD VALUE N/cm2 @ 0,23 mm Indentation</b>	250
<b>SURFACE ROUGHNESS (Ra micron)</b>	0,8
<b>ELONGATION (%)</b>	<0,9
<b>TENSILE STRENGTH (N/mm)</b>	>75
<b>WATER &amp; SOLVENT PROTECTION</b>	Yes
<b>ADDITIONAL INFORMATION</b>	
<b>CARCASS</b>	Robust and stable carcass

**FOR ANY FURTHER DETAILS AND FOR A QUOTATION  
PLEASE REFER TO YOUR SALES MANAGER  
OR EMAIL US AT: [printingsm@trelleborg.com](mailto:printingsm@trelleborg.com)**