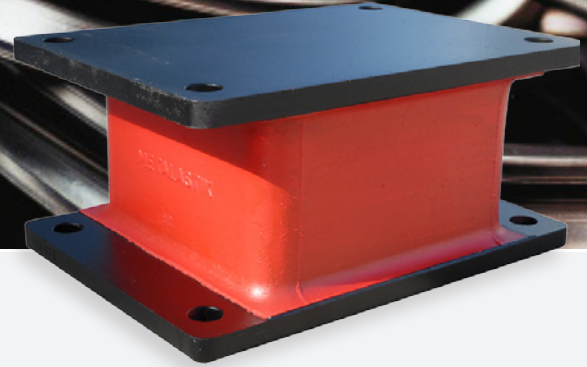




# Sandwich Mounting



## Sandwich Mounting

This range of mountings is suited to the suspension of heavy equipment and machinery, and is extensively used as a flexible mounting for large medium speed diesel marine propulsion units. The ratio of compression to shear stiffness rates can be varied by incorporating rigid interleave plates in the rubber section, thereby enabling the overall suspension properties to be optimized to isolate the major disturbing vibrations.

The mountings are usually installed in a vee arrangement and when correctly positioned, afford a high level of vibration isolation whilst at the same time keeping movement of the suspended equipment, under the action of external forces, to a minimum.

## About Trelleborg Industrial AVS

Over 100 years of experience as Metalastik and Novibra, today Trelleborg Industrial AVS make improvements people can physically feel. From smoother travel to quieter, more efficient machines, we make life feel better. With quality, testing and compliance built in, we're in it for the long haul, ensuring your solution still works, over an extended and often arduous life-cycle.

With three state-of-the-art manufacturing plants across the globe, our experience in rubber to metal bonding enhances several industries, including off-highway vehicles, rail and mass transit, marine and energy and general industry.

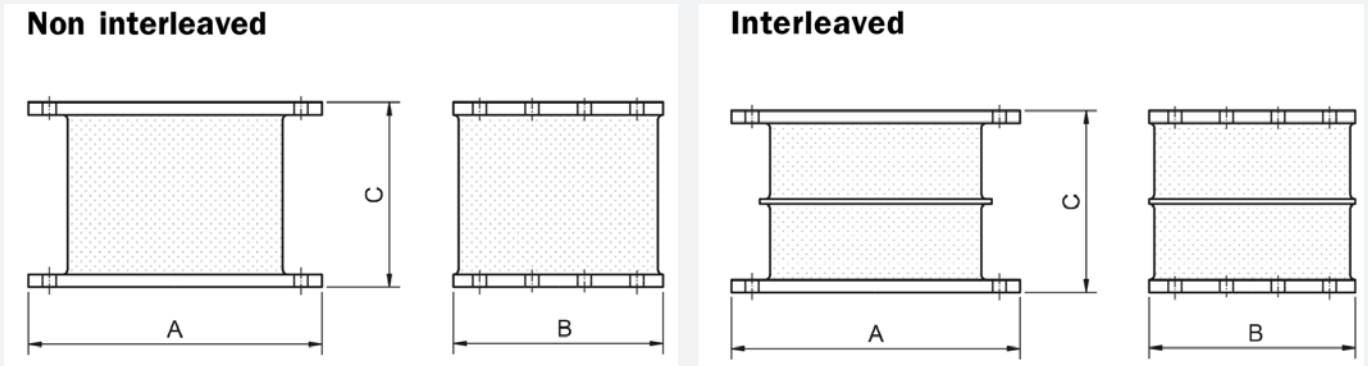
We offer an end-to-end service, to take you from concept through design, manufacturing and testing to delivery. This reduces the complexity of supply, helping you cut costs, mitigate risk and receive on time, on budget delivery.

Trelleborg IAVS is part of Trelleborg Group, which employs 15,000 people in over 40 countries. Whatever your challenge, whatever your role and wherever you are, we are nearby to offer expert knowledge and quality solutions.



# Sandwich Mounting

## Technical Drawing



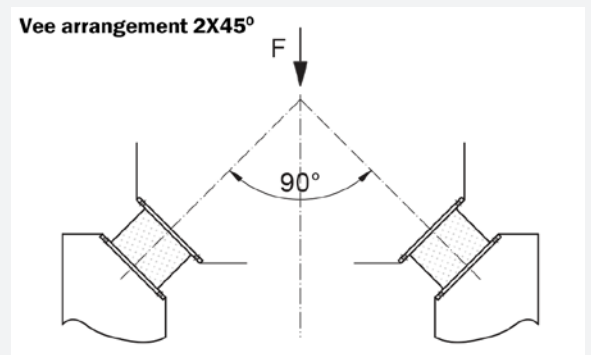
## Product Data

DRAWING No.	TYPE	DIMENSIONS (mm)			No. OF INTERLEAVES	MAX LOAD COMPRESSION (mm)	MAX STATIC DEFLECTION COMPRESSION (mm)	COMPRESSION STIFFNESS (N/mm)		SHEAR STIFFNESS (N/mm)		VEE ARRANGEMENT 2X45°		WEIGHT (kg)
		A	B	C				STATIC	DYN.	STATIC	DYN.	MAX VERTICAL LOAD (kN)	MAX VERTICAL DEFLECTION (mm)	
17-1666	45 IRH	280	200	175	-	11.8	15	890	1000	120	150	20.5	21	17.2
	60 IRH	280	200	175	-	22		1650	2170	250	325	38	21	
17-1742	45 IRH	280	200	127	-	13.2	10	1600	1840	200	230	24	14	14
	60 IRH	280	200	127	-	24.5		3000	3900	375	490	46	14	
17-1783	45 IRH	460	268	109	-	46	8.5	5750	6610	600	690	69	11	29.8
	60 IRH	460	268	109	-	84		10750	14000	1125	1460	132	11	
17-2181	45 IRH	460	268	109	1	83	8	13500	15500	515	590	147	10.5	30.5
	60 IRH	460	268	109	1	155		25500	33200	965	1255	280	10.5	
17-0434	45 IRH	460	268	109	2	224	7.5	28750	33000	575	660	310	10.5	34
	60 IRH	460	268	109	2	417		53900	70000	1080	1400	584	10.5	

N.B in many cases, the horizontal shear stiffness rates will reduce under compressive forces, - see graph overleaf

### Vee arrangements 2 x 45 degree

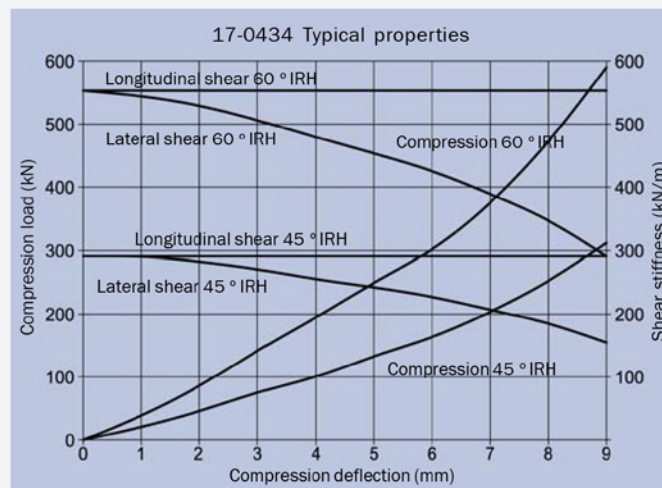
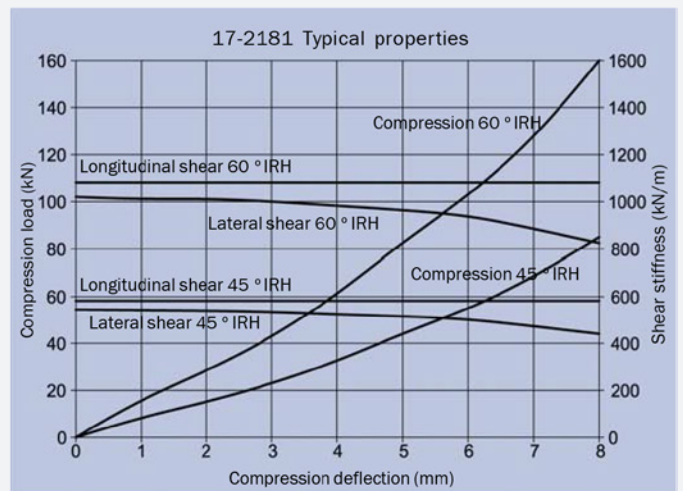
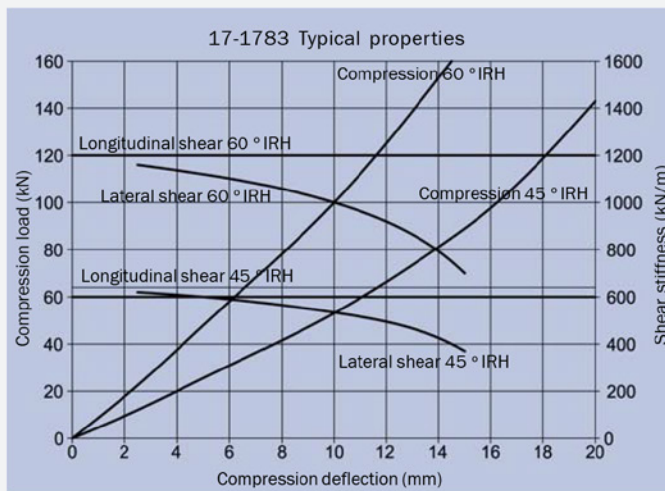
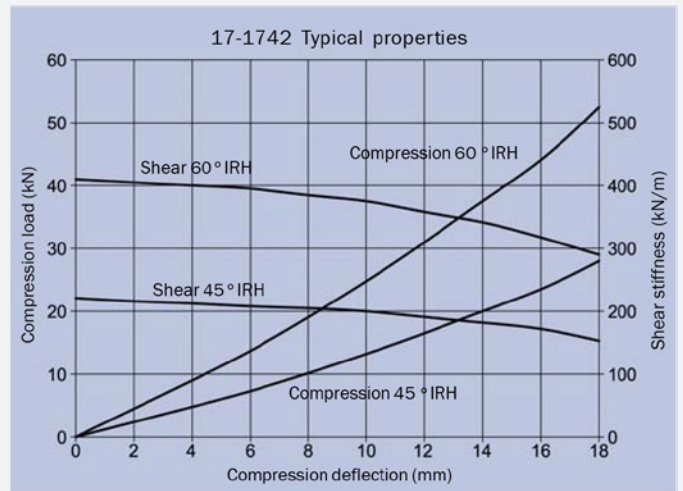
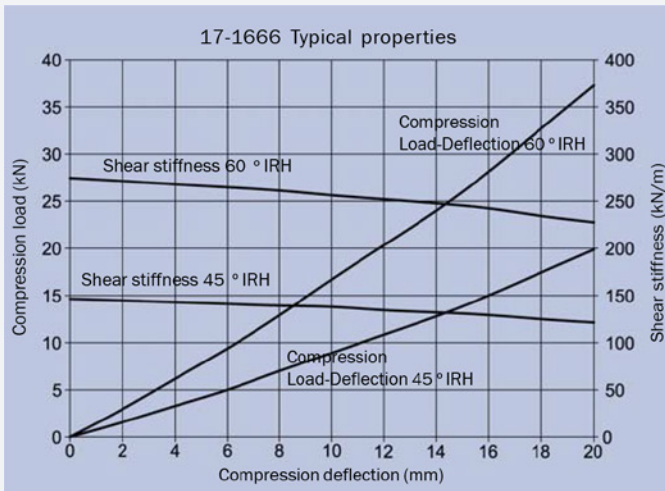
DRAWING No.	RUBBER HARDNESS	MAX STATIC VERTICAL LOAD (kN)	MAX STATIC VERTICAL DEFLECTION (mm)
17-1666	45	20.5	21
	60	38	
17-1742	45	24	14
	60	46	
17-1783	45	69	11
	60	132	
17-2181	45	147	10.5
	60	280	
17-0434	45	310	10.5
	60	584	



Mountings are frequently used in a vee arrangement for the suspension of large medium speed diesel engines. Typical arrangement and properties are shown in the adjacent diagram.



# Sandwich Mounting



## Buffers

Buffers 15-3468 and 15-3572 may be used as a non metallic stop to limit movement of flexibly suspended equipment under extreme seaway conditions. Properties of these buffers are shown below

